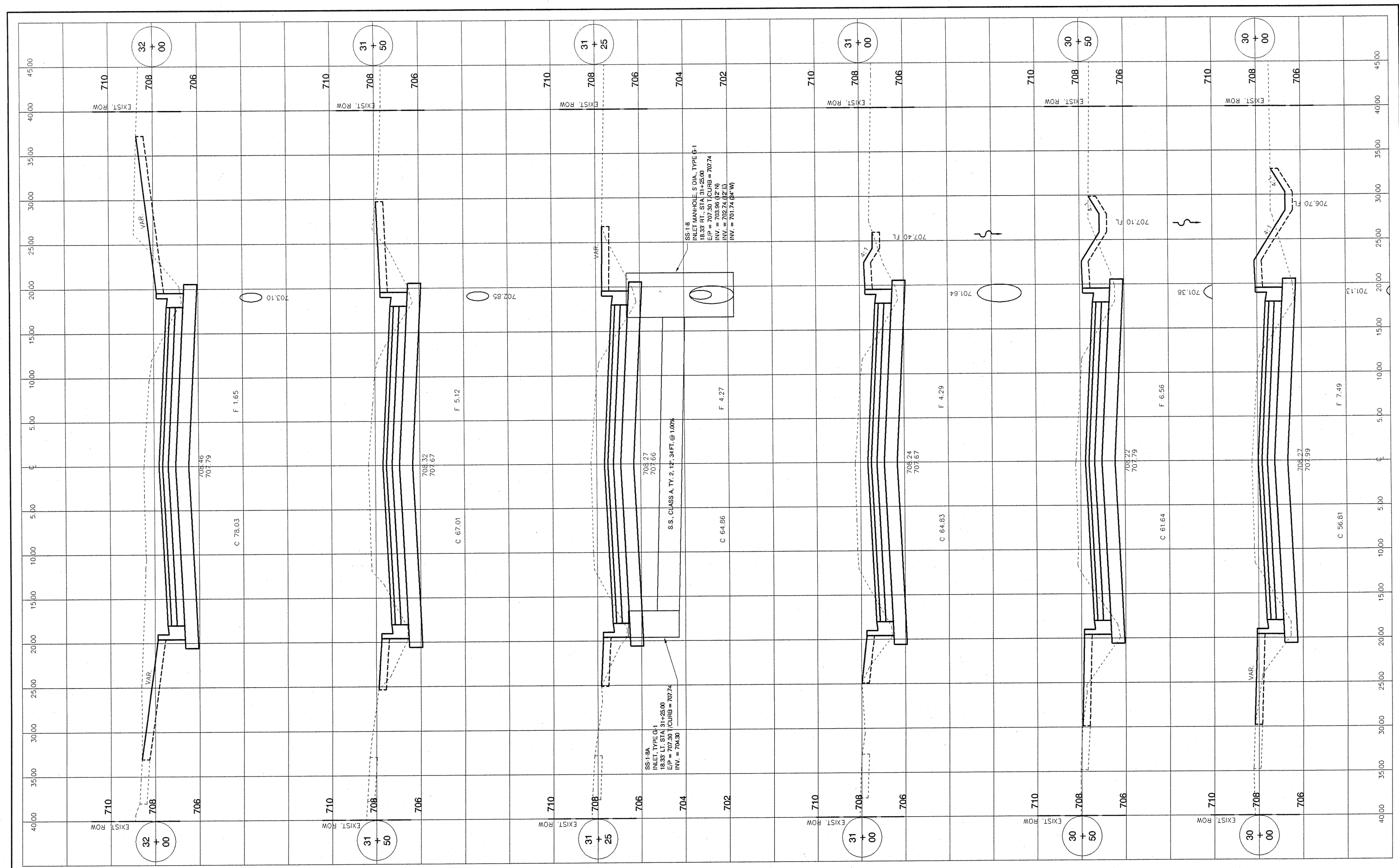


09-112 EPNS-SEPR-03.DWG



DESIGNED	WFS	REVISED
DRAWN	DEH	REVISED
CHECKED	WFS	REVISED
DATE	10-25-10	REVISED

STATE OF ILLINOIS  
 DEPARTMENT OF TRANSPORTATION

STREET IMPROVEMENTS EAST JEFFERSON STREET MORTON, ILLINOIS  
 CROSS SECTIONS  
 SCALE: 1" = 5' H 1" = 2' V SHEET NO. 14 OF 20 SHEETS STA. 30+00 TO STA. 32+00

F.A. ROUTE	SECTION	COUNTY	TOTAL SHEETS	SHEET NO.
6721	07-00116-01-FP	TAZEWELL	20	14
CONTRACT NO. 89490				
ILLINOIS FEDERAL ROAD DIST NO. 7				