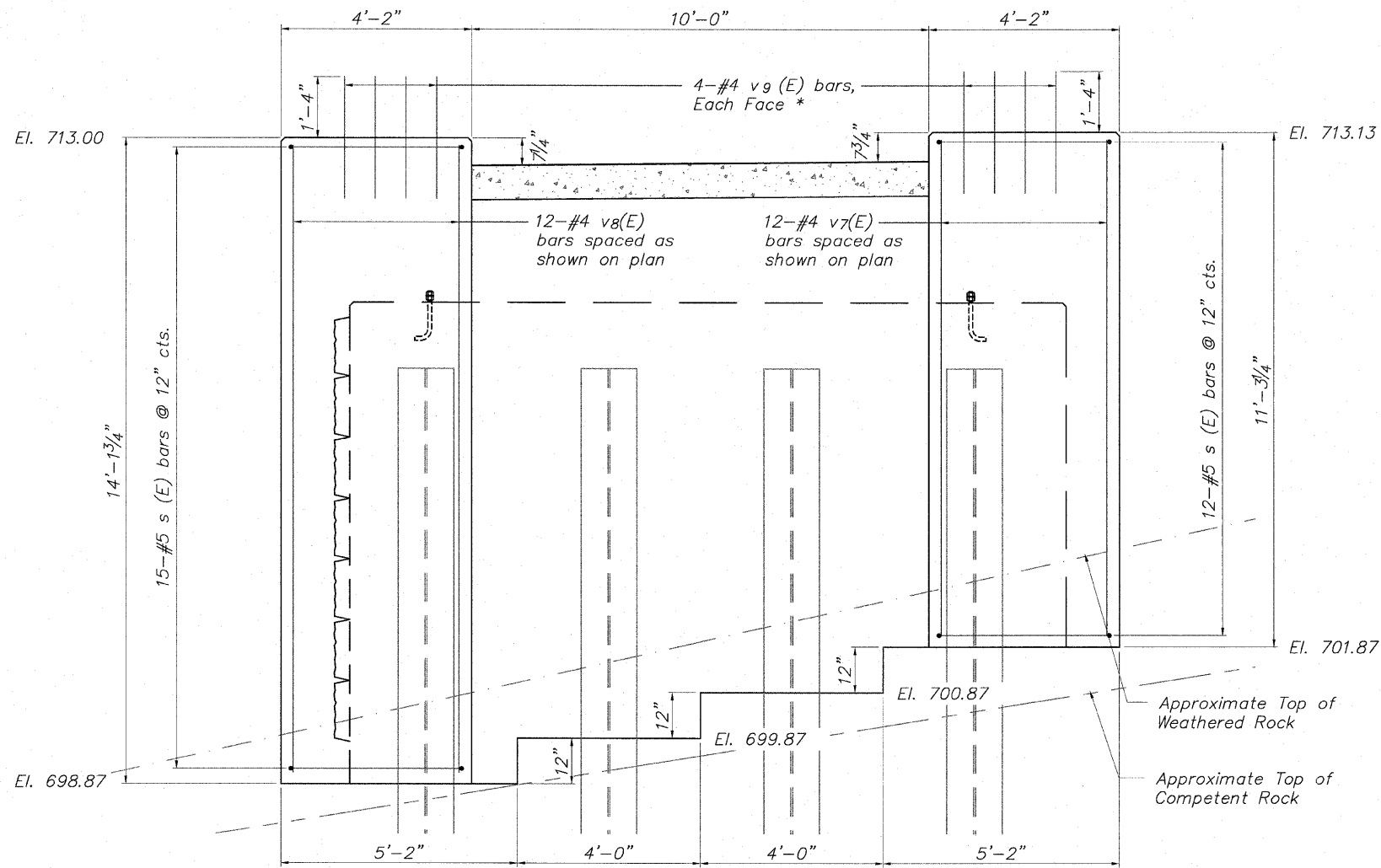
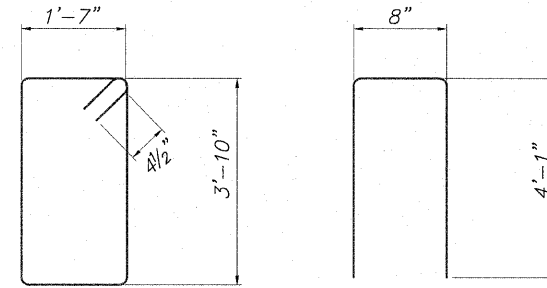


STATE OF ILLINOIS
DEPARTMENT OF TRANSPORTATION

* Coordinate location of v₉(E) bars with cores of Column Masonry Units

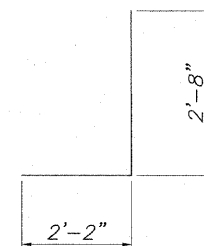


ELEVATION (Showing Column Reinforcement)
Looking South

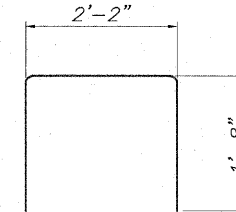


BAR s (E)

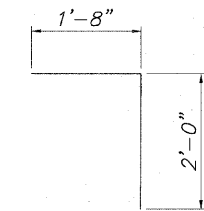
BAR v (E)



BAR h₆(E)



BAR v₁(E)



BAR v₆(E)

MINIMUM BAR LAP

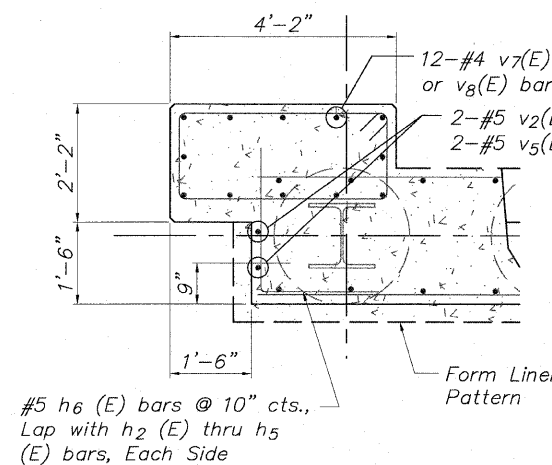
No. 4 bars 1'-8"
No. 5 bars 2'-2"

BILL OF MATERIAL

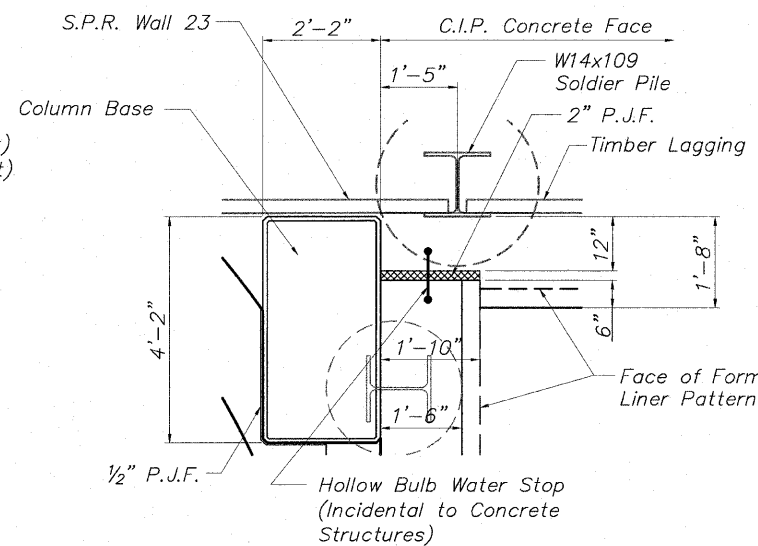
South Abutment For Struct. No. 101-6351

| Bar | No. | Size | Length | Shape |
|--------------------|-----|------|---------|-------|
| h (E) | 6 | #4 | 9'-8" | — |
| h ₁ (E) | 12 | #4 | 4'-0" | — |
| h ₂ (E) | 19 | #5 | 15'-4" | — |
| h ₃ (E) | 2 | #5 | 11'-4" | — |
| h ₄ (E) | 4 | #5 | 7'-4" | — |
| h ₅ (E) | 2 | #5 | 3'-4" | — |
| h ₆ (E) | 22 | #5 | 4'-10" | └ |
| s (E) | 27 | #5 | 11'-7" | □ |
| v (E) | 10 | #4 | 8'-10" | — |
| v ₁ (E) | 12 | #4 | 5'-6" | — |
| v ₂ (E) | 8 | #5 | 10'-1" | — |
| v ₃ (E) | 6 | #5 | 9'-1" | — |
| v ₄ (E) | 6 | #5 | 8'-1" | — |
| v ₅ (E) | 8 | #5 | 7'-1" | — |
| v ₆ (E) | 10 | #4 | 3'-8" | └ |
| v ₇ (E) | 12 | #4 | 10'-10" | — |
| v ₈ (E) | 12 | #4 | 13'-8" | — |
| v ₉ (E) | 16 | #4 | 2'-8" | — |

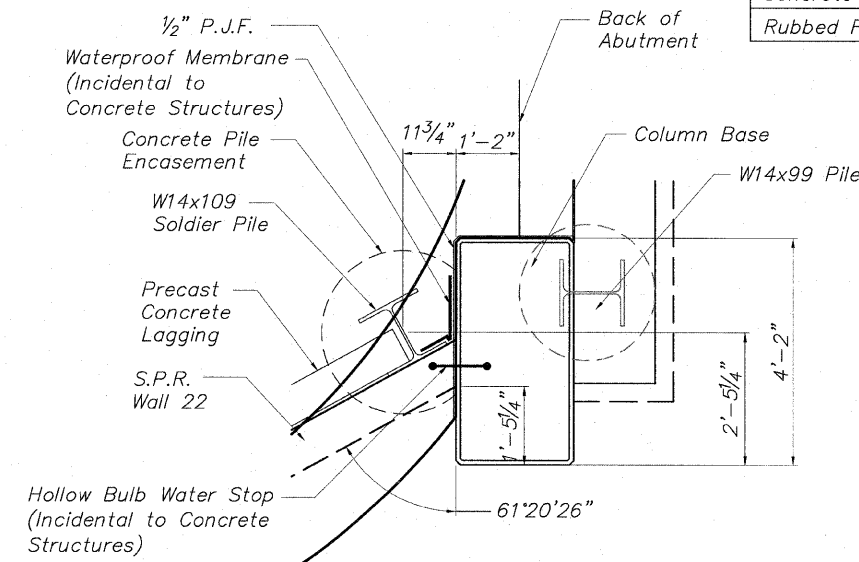
| | | |
|--|---------|-------|
| Concrete Structures | Cu. Yd. | 22.2 |
| Reinforcement Bars (Epoxy Coated) | Pound | 1,480 |
| Structure Excavation | Cu. Yd. | 21.0 |
| Furnishing Soldier Pile W Section W14x99 | Foot | 61 |
| Setting Piles in Rock | Each | 4 |
| Geocomposite Wall Drain | Sq. Yd. | 25.9 |
| Form Liner Textured Surface | Sq. Ft. | 135 |
| Staining Concrete Structures | Sq. Yd. | 0 |
| Rock Excavation for Structures | Cu. Yd. | 9.2 |
| Concrete Sealer | Sq. Ft. | 72 |
| Rubbed Finish | Sq. Ft. | 80 |



TYPICAL SECTION AT COLUMN



WEST SIDE SOUTH ABUT PLAN



EAST SIDE SOUTH ABUT PLAN

**SOUTH ABUTMENT DETAILS
PEDESTRIAN TRUSS BRIDGE
PEDESTRIAN RIVERWALK
ALONG THE ROCK RIVER
WINNEBAGO COUNTY
SECTION NO. 06-00543-00-BT
STATION 210+90.67 TO
STATION 211+87.01
STRUCTURE NO. 6351**

| | |
|---------------|-----|
| DESIGNED | GTB |
| CHECKED | AAG |
| DRAWN | JAW |
| PEER REVIEWED | |

McClure
Engineering Associates, Inc.
7282 Argus Drive
(815) 398-2332
Rockford, Illinois 61107-5837
Fax (815) 398-2496
Design Firm License: Illinois #184-000816
Copyright 2010 By McClure Engineering Associates, Inc.

SHEET NO. 5
8 SHEETS

| F.A. RTE. | SECTION | COUNTY | TOTAL SHEETS | SHEET NO. |
|---------------------|----------------|------------------|--------------|-----------|
| | 06-00543-00-BT | WINNEBAGO | 148 | 71 |
| CONTRACT NO. | | | 85521 | |
| FED. ROAD DIST. NO. | ILLINOIS | FED. AID PROJECT | | |