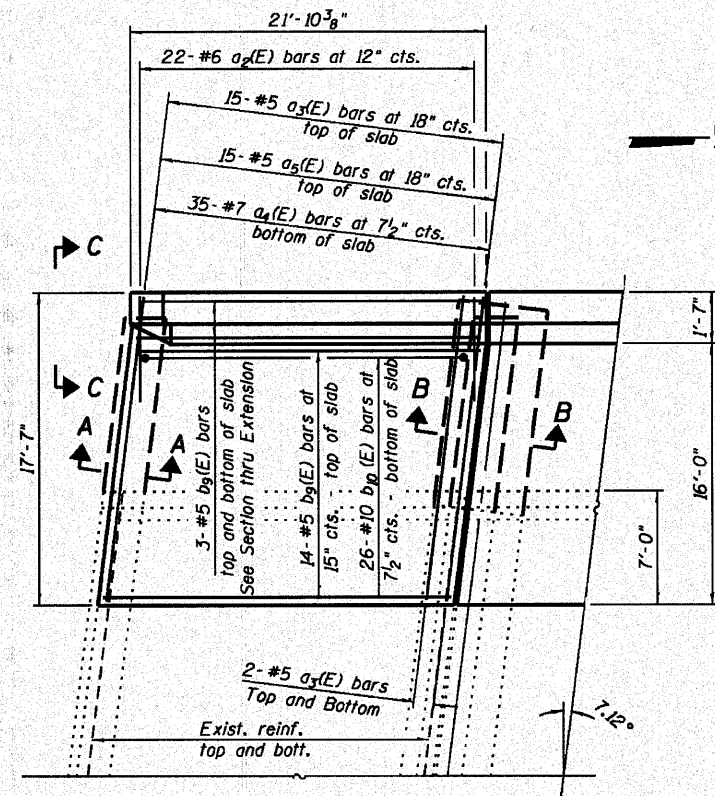
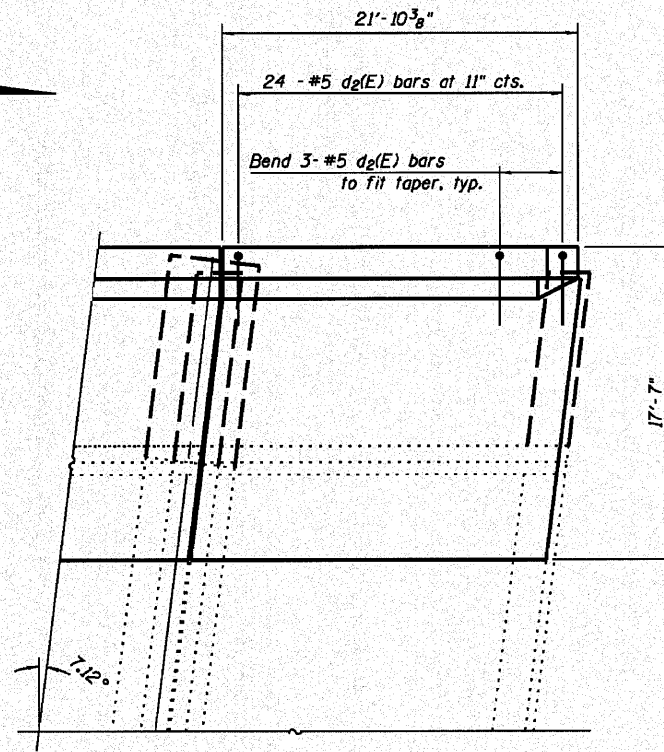


STATE OF ILLINOIS  
DEPARTMENT OF TRANSPORTATION



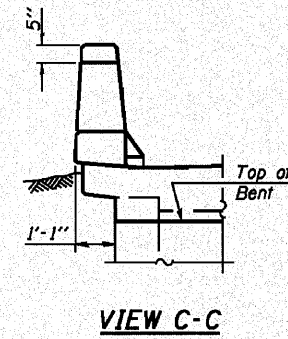
**SOUTH VAULTED SLAB PLAN**

(For parapet reinforcement see North Vaulted Slab Plan and Parapet Elevation).



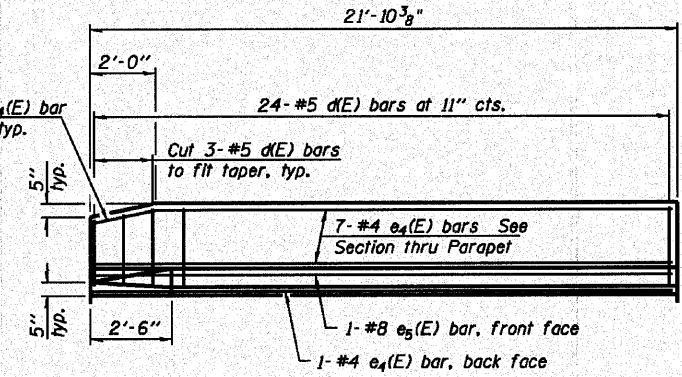
**NORTH VAULTED SLAB PLAN**

(For deck reinforcement see South Vaulted Slab Plan).

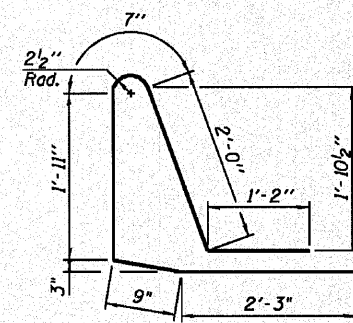


**VIEW C-C**

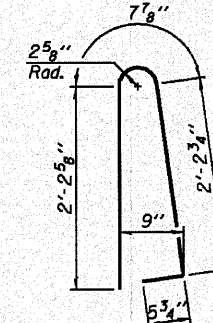
Bend 1-#4 e4(E) bar to fit taper, typ.



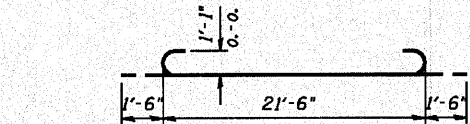
**INSIDE ELEVATION OF PARAPET**



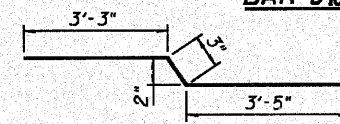
**BAR d2(E)**



**BAR d(E)**



**BAR b10(E)**



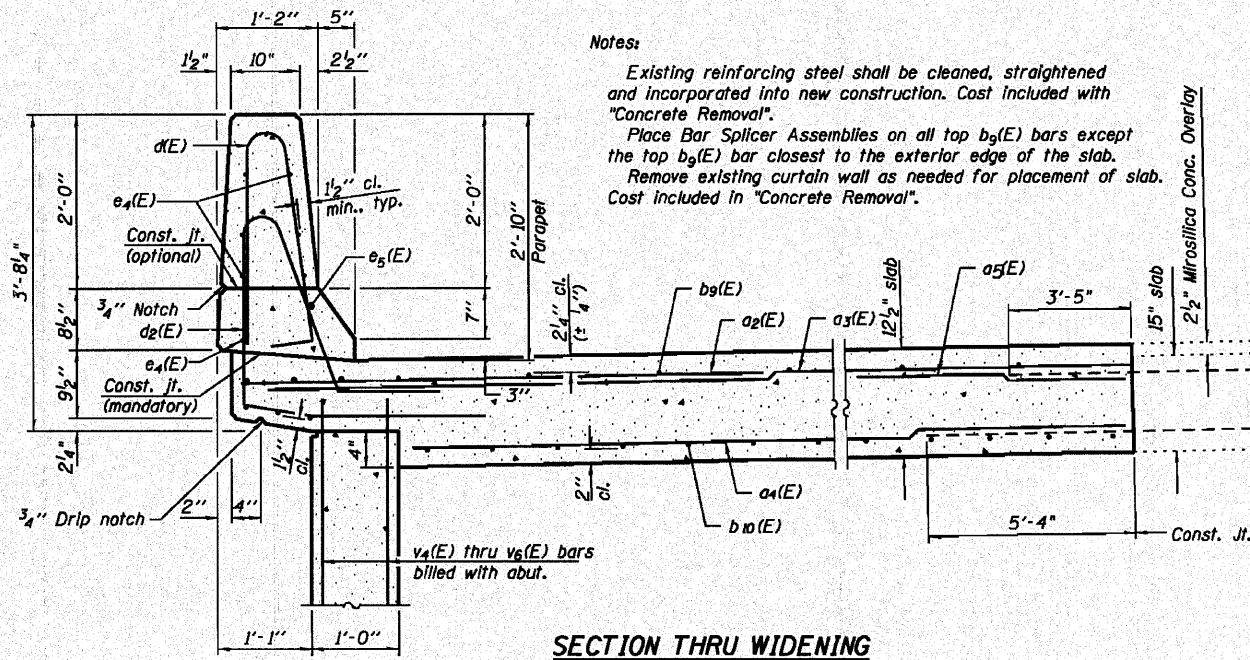
**BAR a5(E)**

**TWO VAULTED SLABS  
BILL OF MATERIAL**

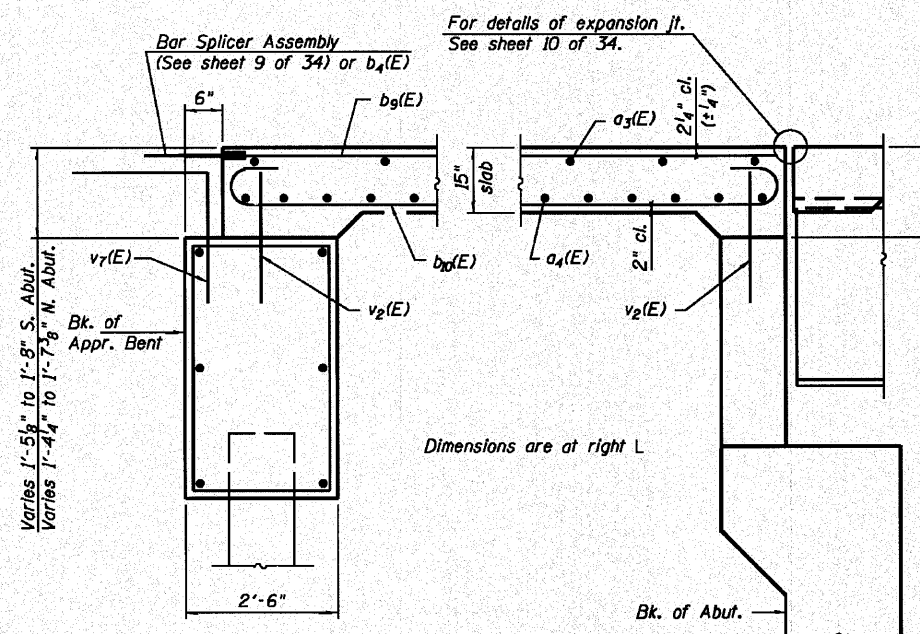
Bar	No.	Size	Length	Shape
a2(E)	44	#6	6'-6"	—
a3(E)	38	#5	17'-2"	—
a4(E)	70	#7	15'-3"	—
a5(E)	30	#5	6'-11"	—
b9(E)	40	#5	21'-6"	—
b10(E)	52	#10	24'-6"	—
d(E)	48	#5	5'-7"	—
d2(E)	48	#5	8'-8"	—
e4(E)	16	#4	21'-6"	—
e5(E)	2	#8	21'-6"	—
Concrete Superstructure			Cu. Yd.	40.6
Reinforcement Bars, Epoxy Coated			Pound	10,950

**Notes:**

Existing reinforcing steel shall be cleaned, straightened and incorporated into new construction. Cost included with "Concrete Removal".  
Place Bar Splicer Assemblies on all top b9(E) bars except the top b9(E) bar closest to the exterior edge of the slab.  
Remove existing curtain wall as needed for placement of slab. Cost included in "Concrete Removal".



**SECTION THRU WIDENING**



**SECTION A-A**

**SECTION B-B**

**MINIMUM BAR LAP**

#5 bar = 3'-3"  
#7 bar = 5'-2"

**VAULTED SLABS  
STRUCTURE NO. 082-0176**

SHEET NO. 8 34 SHEETS	F.A. RTE.	SECTION	COUNTY	TOTAL SHEETS	SHEET NO.
	64	82-5K-2	ST. CLAIR	162	91
CONTRACT NO. 76D59					
ILLINOIS FED. AID PROJECT					

DESIGNED - T.J.Z  
CHECKED - C.W.C  
DRAWN - D.L.H  
CHECKED - C.W.C, S.D.S

**WHS & CO.**  
**ENGINEERING**  
7018 KINGSMILL CT.,  
SPRINGFIELD, IL  
(217) 483-9457  
DESIGN FIRM #184001036