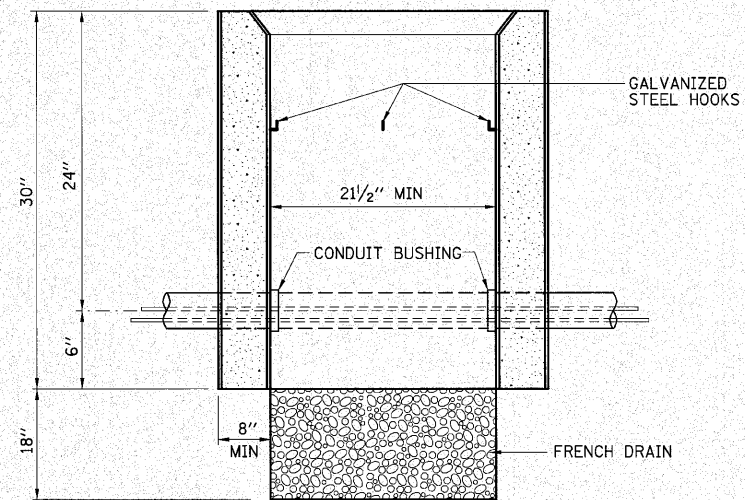


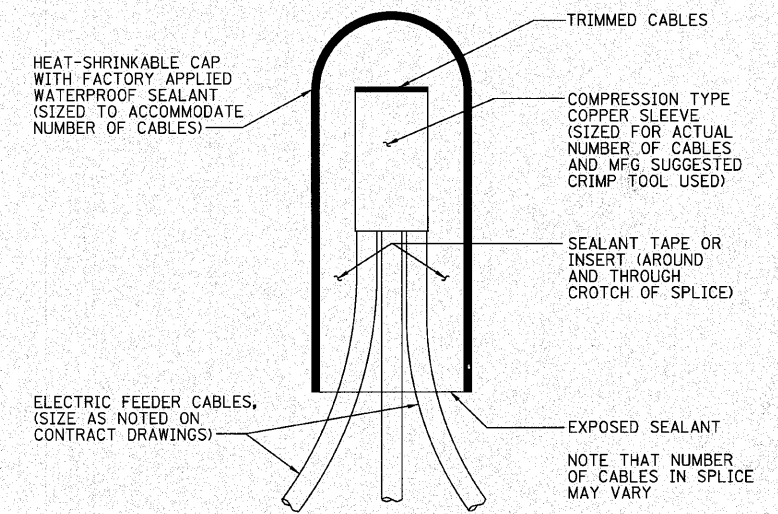
PLAN

NOTE:  
REMOVAL OF EXISTING CONDUIT FROM THE  
HANDHOLE AND THE INSTALLATION OF THE  
CONDUIT BUSHING SHALL BE INCLUDED  
IN THE COST OF THE HANDHOLE



ELEVATION

**HANDHOLE AND DOUBLE HANDHOLE TO INTERCEPT EXISTING CONDUIT DETAIL**



**SPLICING DETAIL**

NOTE THAT NUMBER  
OF CABLES IN SPLICE  
MAY VARY

FILE NAME = c:\pw_work\pwsdot\burnsideem\c210578\07659-shr-ts9.dgn	USER NAME = burnsideem	DESIGNED -	REVISED -	<b>STATE OF ILLINOIS DEPARTMENT OF TRANSPORTATION</b>	<b>TRAFFIC SIGNAL DETAILS</b>	F.A.I. RTE.	SECTION	COUNTY	TOTAL SHEETS	SHEET NO.
PLOT SCALE = 20,0000 ' / IN.	CHECKED -	REVISED -	64			82-5K-2	ST. CLAIR	162	59	
PLOT DATE = 8/10/2010	DATE -	REVISED -	CONTRACT NO. 76D59							
						SCALE:	SHEET NO. 9 OF 9 SHEETS	STA.	TO STA.	ILLINOIS FED. AID PROJECT