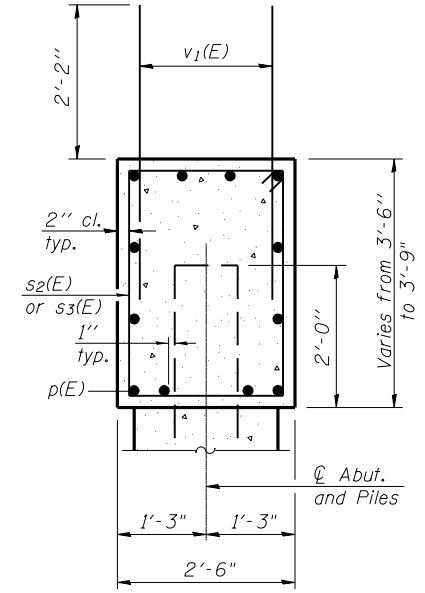
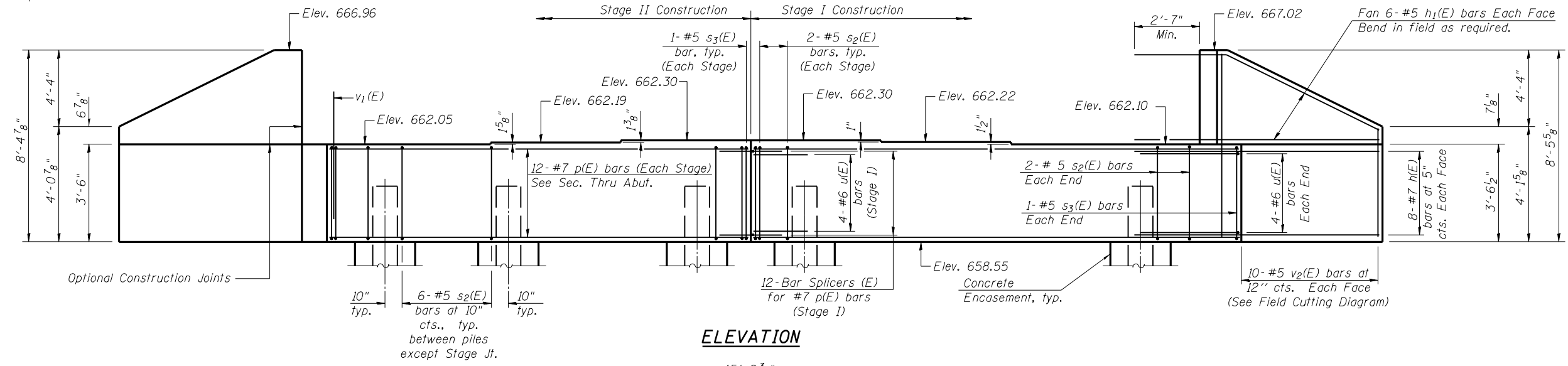


Nov-03-2010 11:36:14 AM

Notes:
 Pour steps monolithically with cap.
 Space reinforcement to miss anchor bolts.

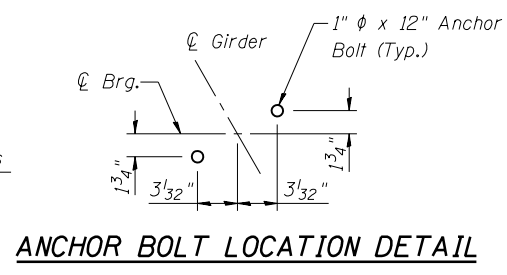


SEC. THRU ABUT.

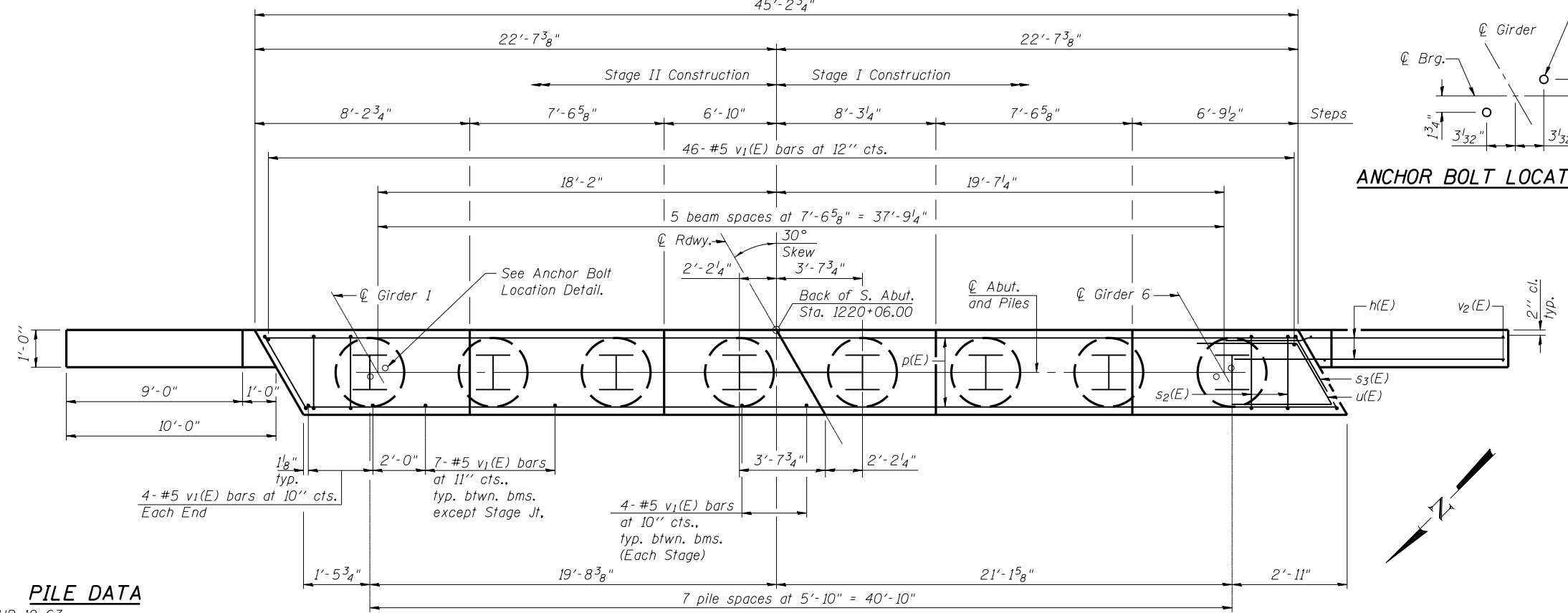
BILL OF MATERIAL

Bar	No.	Size	Length	Shape
h(E)	32	#7	14'-3"	—
h1(E)	24	#5	14'-3"	—
p(E)	24	#7	22'-4"	—
s2(E)	44	#5	11'-7"	□
s3(E)	4	#5	12'-3"	□
u(E)	12	#6	12'-9"	∟
v1(E)	90	#5	4'-4"	—
v2(E)	20	#5	12'-1"	—
Structure Excavation		Cu. Yd.	156	
Concrete Structures		Cu. Yd.	19.9	
Reinforcement Bars, Epoxy Coated		Pound	3,860	
Furnishing Steel Piles, HP 12x63		Foot	413	
Driving Piles		Foot	413	
Test Pile, HP 12x63		Each	1	
Concrete Encasement		Cu. Yd.	2.8	
Bar Splicers		Each	12	

For details of Bar Splicers, see sheet 20 of 23.
 For details of piles and Concrete Encasement, see sheet 19 of 23.



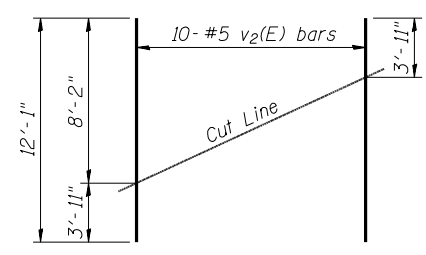
ANCHOR BOLT LOCATION DETAIL



PLAN

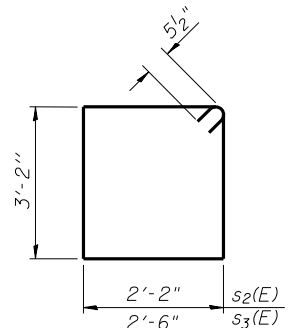
PILE DATA

Type: HP 12x63
 Nominal Required Bearing: 449 kips/pile
 Factored Resistance Available: 247 kips/pile
 Est. Length: 59 ft
 No. Production Piles: 7
 No. Test Piles: 1 - Stage I

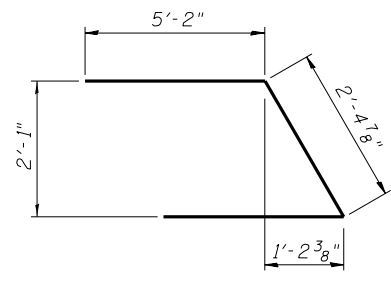


FIELD CUTTING DIAGRAM

Order v2(E) full length. Cut as shown and use remainder of bars in opposite face.



BARS s2(E) & s3(E)



BAR u(E)