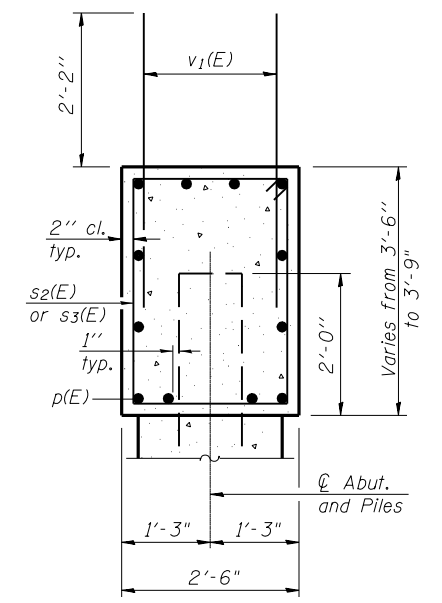
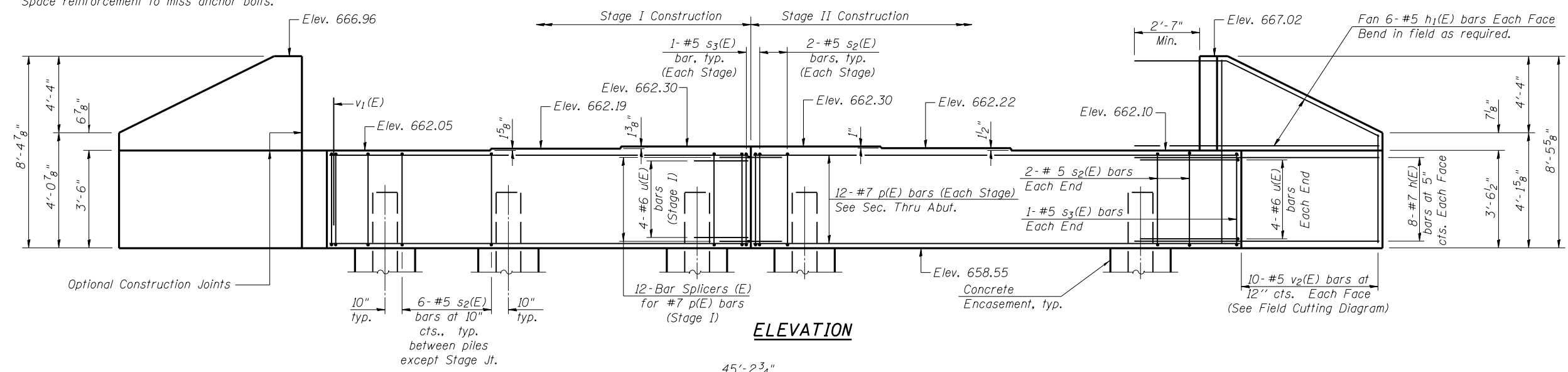


Notes:
 Four steps monolithically with cap.
 Space reinforcement to miss anchor bolts.

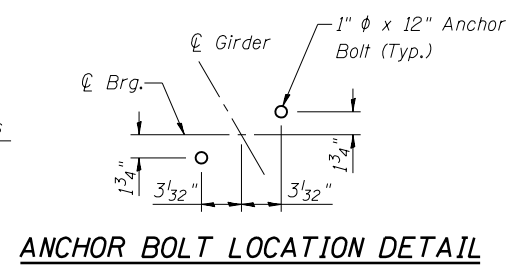


SEC. THRU ABUT.

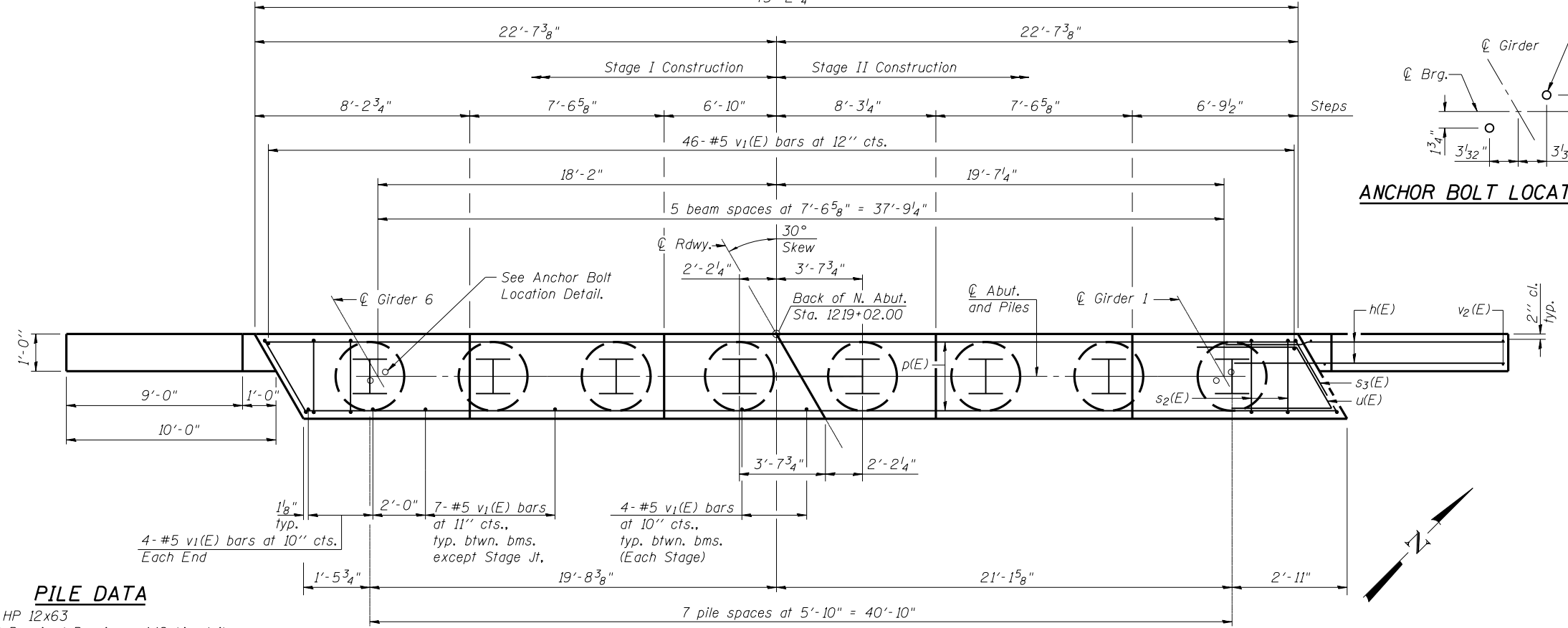
BILL OF MATERIAL

| Bar | No. | Size | Length | Shape |
|----------------------------------|-----|------|---------|-------|
| h(E) | 32 | #7 | 14'-3" | — |
| h1(E) | 24 | #5 | 14'-3" | — |
| p(E) | 24 | #7 | 22'-4" | — |
| s2(E) | 44 | #5 | 11'-7" | □ |
| s3(E) | 4 | #5 | 12'-3" | □ |
| u(E) | 12 | #6 | 12'-9" | ∩ |
| v1(E) | 90 | #5 | 4'-4" | — |
| v2(E) | 20 | #5 | 12'-1" | — |
| Structure Excavation | | | Cu. Yd. | 156 |
| Concrete Structures | | | Cu. Yd. | 19.9 |
| Reinforcement Bars, Epoxy Coated | | | Pound | 3,860 |
| Furnishing Steel Piles, HP 12x63 | | | Foot | 392 |
| Driving Piles | | | Foot | 392 |
| Test Pile, HP 12x63 | | | Each | 1 |
| Concrete Encasement | | | Cu. Yd. | 2.8 |
| Bar Splicers | | | Each | 12 |

For details of Bar Splicers, see sheet 20 of 23.
 For details of piles and Concrete Encasement, see sheet 19 of 23.

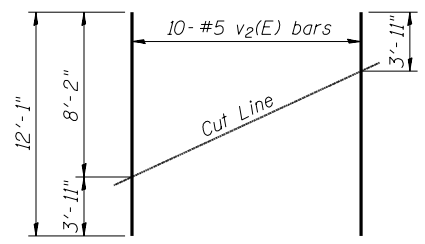


ANCHOR BOLT LOCATION DETAIL



PILE DATA

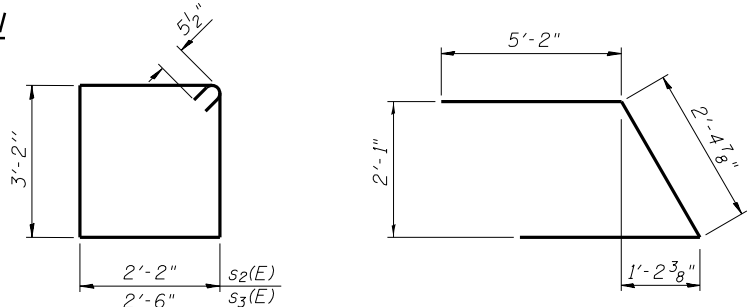
Type: HP 12x63
 Nominal Required Bearing: 449 kips/pile
 Factored Resistance Available: 247 kips/pile
 Est. Length: 56 ft
 No. Production Piles: 7
 No. Test Piles: 1 - Stage I



FIELD CUTTING DIAGRAM

Order v2(E) full length. Cut as shown and use remainder of bars in opposite face.

PLAN



BARS s2(E) & s3(E)

BAR u(E)