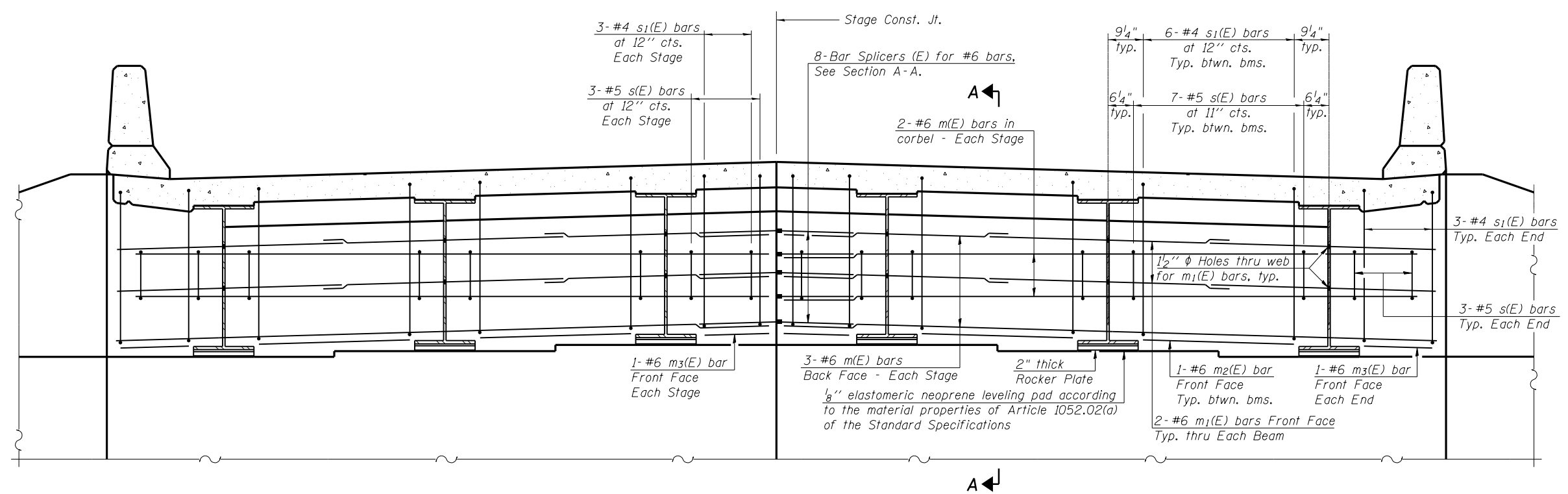


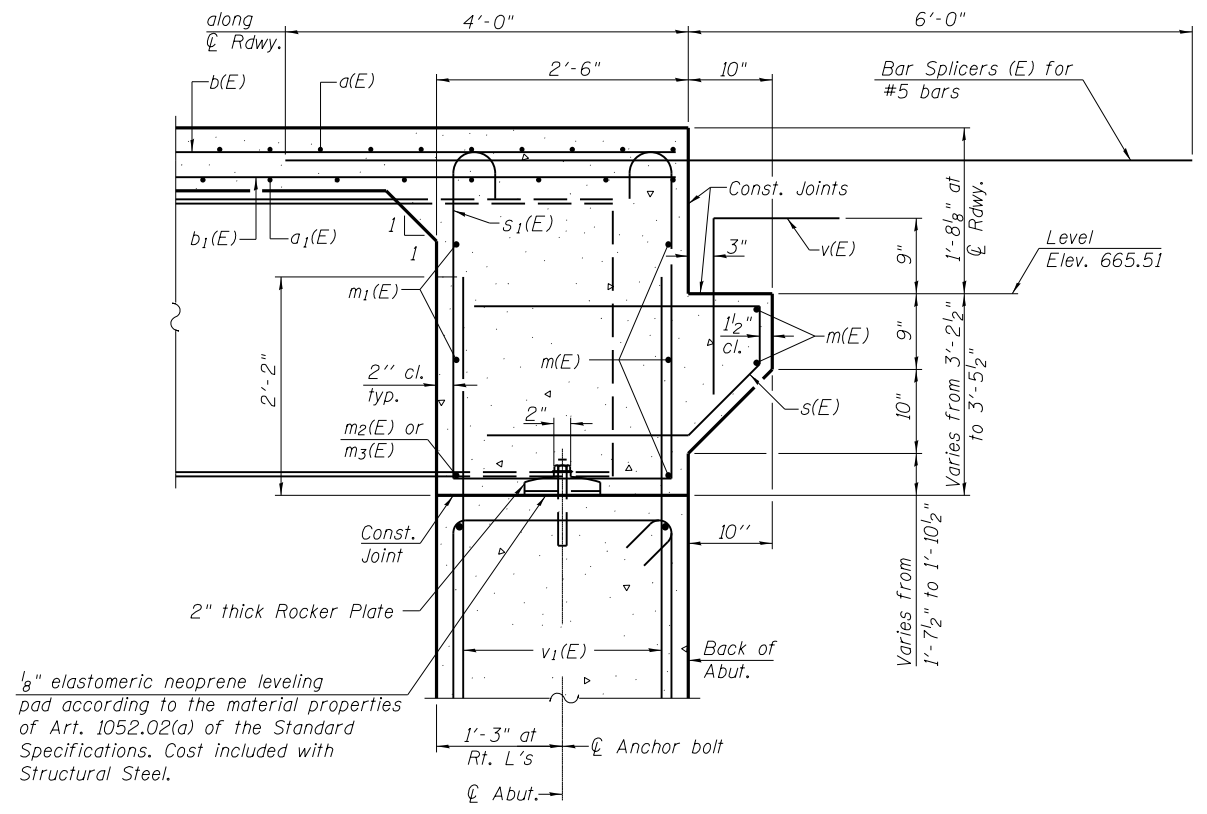
Nov-03-2010 11:13:55 AM



DIAPHRAGM ELEVATION AT ABUTMENT

Notes:
 Reinforcement bars in diaphragm are billed with superstructure on sheet 10 of 23.
 Concrete in diaphragm is included with Concrete Superstructure on sheet 10 of 23.
 For details of bars s(E) & s₁(E) see sheet 10 of 23.
 The s(E) and s₁(E) bars shall be placed parallel to the beams. Spacing for these bars shall be at right angles to the beams.
 For location of holes thru web, see sheet 15 of 23.

MIN. BAR LAP
 #6 bar = 3'-4"



SECTION A-A
 Dimensions at right angles to abutment, except as shown.

FILE NAME =	USER NAME =	DESIGNED <i>RJP</i>	REVISED -	STATE OF ILLINOIS DEPARTMENT OF TRANSPORTATION	DIAPHRAGM DETAILS STRUCTURE NO. 034-0528	F.A.P. RTE.	SECTION	COUNTY	TOTAL SHEETS	SHEET NO.
	PLOT SCALE =	DRAWN <i>RJP</i>	REVISED -			685	(117,118)RS-4,119RS-1; 118B-1	HANCOCK	101	53
PLOT DATE =	CHECKED <i>ADL</i>	REVISED -		SHEET NO. 11 OF 23 SHEETS		ILLINOIS FED. AID PROJECT			CONTRACT NO. 72B05	

Klingner & Associates P.C.