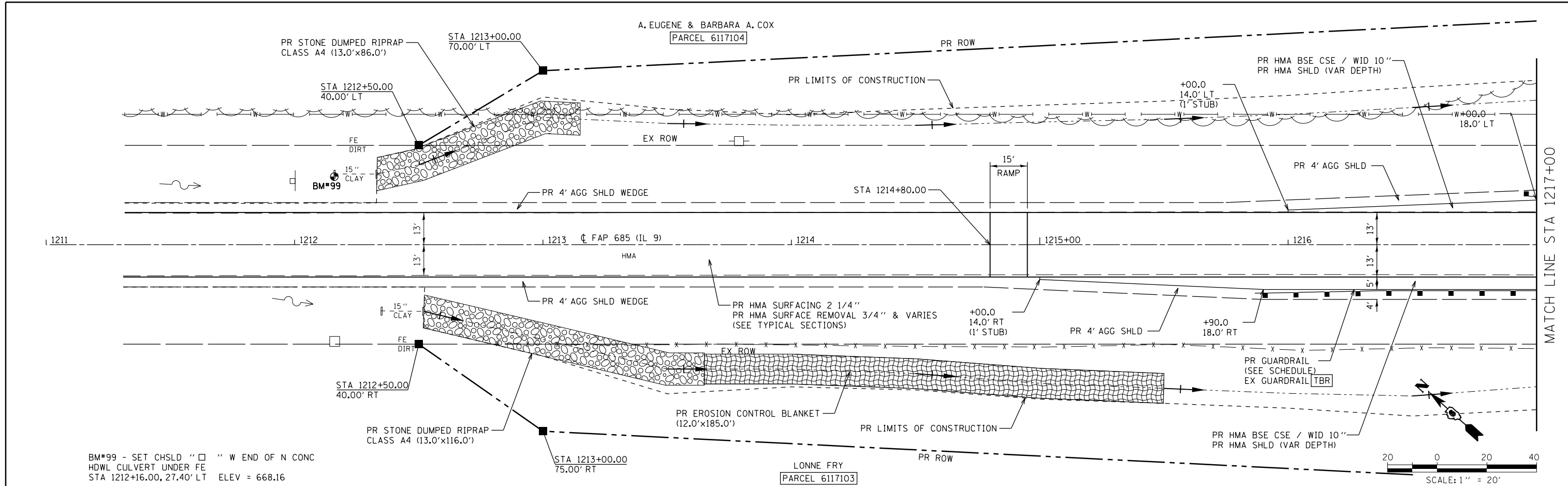
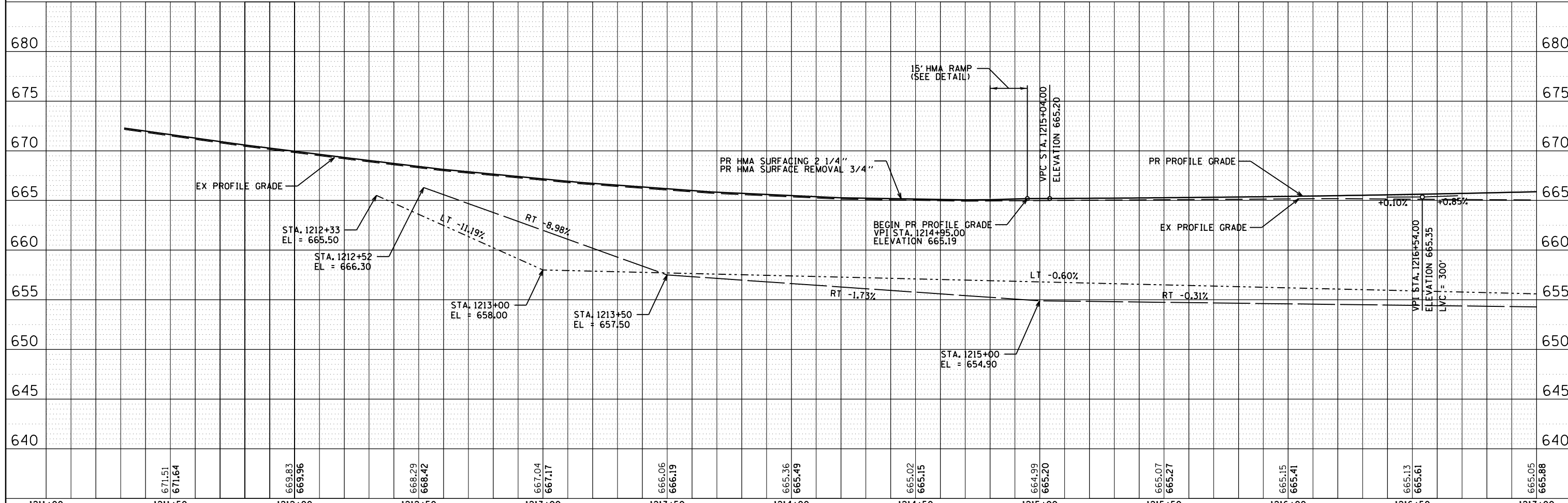


DATE	
BY	
PLAN	
SURVEYED	
PLOTTED	
CHECKED	
NOTE BOOK	
NO.	
CADD FILE NAME	

DATE	
BY	
PROFILE	
SURVEYED	
PLOTTED	
CHECKED	
NOTE BOOK	
NO.	
STRUCTURE	
NOTATIS	
CHKD	



BM*99 - SET CHSLD " □ " W END OF N CONC
 HOWL CULVERT UNDER FE
 STA 1212+16.00, 27.40' LT ELEV = 668.16



1211+00	1211+50	1212+00	1212+50	1213+00	1213+50	1214+00	1214+50	1215+00	1215+50	1216+00	1216+50	1217+00
671.51 671.64	669.83 669.96	668.29 668.42	667.04 667.17	666.06 666.19	665.36 665.49	665.02 665.15	664.99 665.20	665.07 665.27	665.15 665.41	665.13 665.61	665.05 665.88	

FILE NAME =
 c:\pwork\pwork\loughlinr1\0244977\0672805-sht-Plan01.dgn

USER NAME = loughlinr1	DESIGNED -	REVISD -
	CHECKED -	REVISD -
	DRAWN -	REVISD -
	CHECKED -	REVISD -

STATE OF ILLINOIS
DEPARTMENT OF TRANSPORTATION

PLAN AND PROFILE SHEET
 SCALE: 1"=20' SHEET NO. 1 OF 4 SHEETS STA. 1211+000 STA. 1217+00

F.A.P. RTE.	SECTION	COUNTY	TOTAL SHEETS	SHEET NO.
685 (117,118)RS-4,119RS-1; 118B-1		HANCOCK	101	32
CONTRACT NO. 72B05				
FED. ROAD DIST. NO. ILLINOIS FED. AID PROJECT				