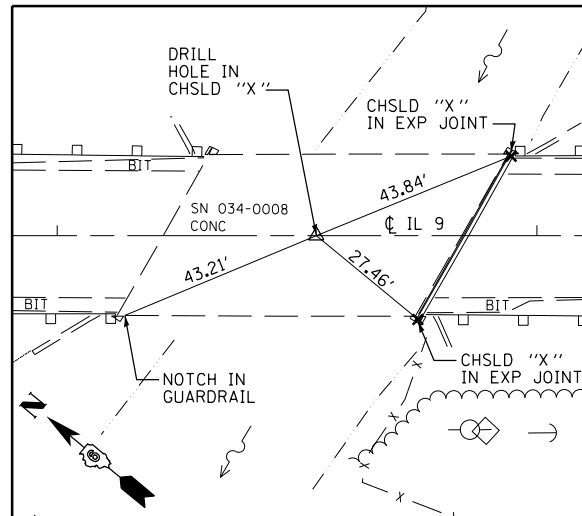
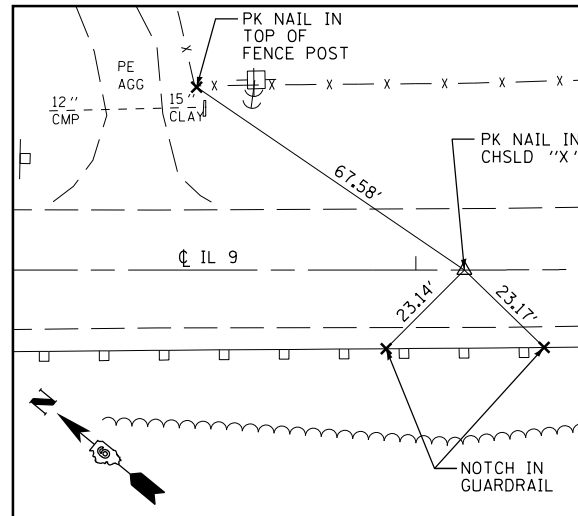


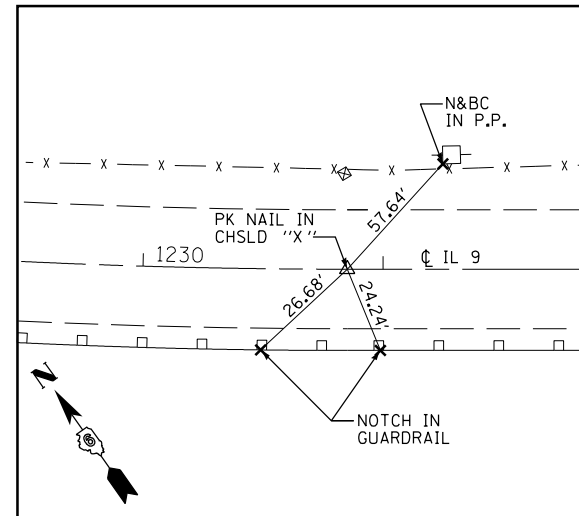
FAP 685 (IL 9) POT STA 1205+21.84
 N 1,423,374.64 E 2,086,008.03



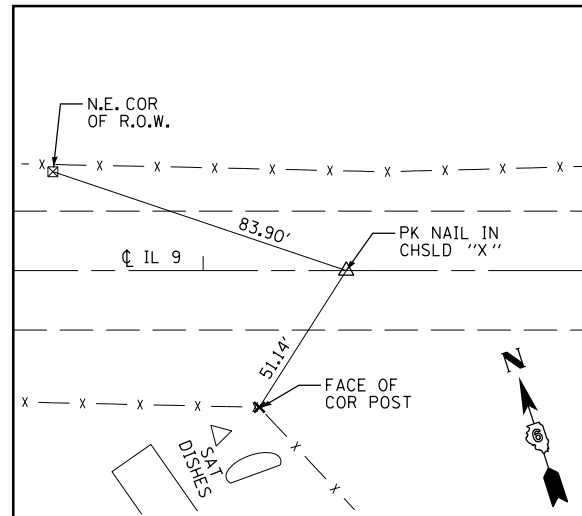
FAP 685 (IL 9) POT STA 1219+54.00
 N 1,422,323.73 E 2,086,981.00



FAP 685 (IL 9) PC STA 1223+10.10
 N 1,422,062.43 E 2,087,222.93



FAP 685 (IL 9) PT STA 1230+85.11
 N 1,421,571.66 E 2,087,819.68



FAP 685 (IL 9) POT STA 1239+59.60
 N 1,421,112.63 E 2,088,564.00

FILE NAME =	USER NAME = laughlrr1	DESIGNED -	REVISED -
c:\pwwork\pwwork\laughlrr1\0244977\0672805-sh1-ATB.dgn		DRAWN -	REVISED -
	PLOT SCALE = 400.0000' / in.	CHECKED -	REVISED -
	PLOT DATE = Nov-03-2010 11:31:54AM	DATE -	REVISED -

**STATE OF ILLINOIS
 DEPARTMENT OF TRANSPORTATION**

HORIZONTAL CONTROL TIES

SCALE: none SHEET NO. 1 OF 1 SHEETS STA. TO STA.

F.A.P. RTE.	SECTION	COUNTY	TOTAL SHEETS	SHEET NO.
685	(117,118)RS-4,119RS-1; 118B-1	HANCOCK	101	17
CONTRACT NO. 72B05				
FED. ROAD DIST. NO.		ILLINOIS FED. AID PROJECT		