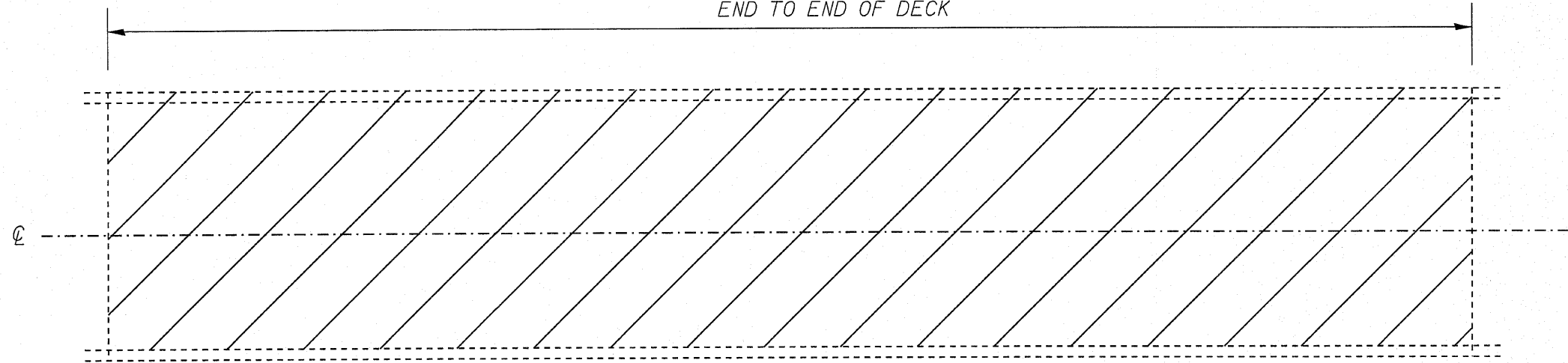
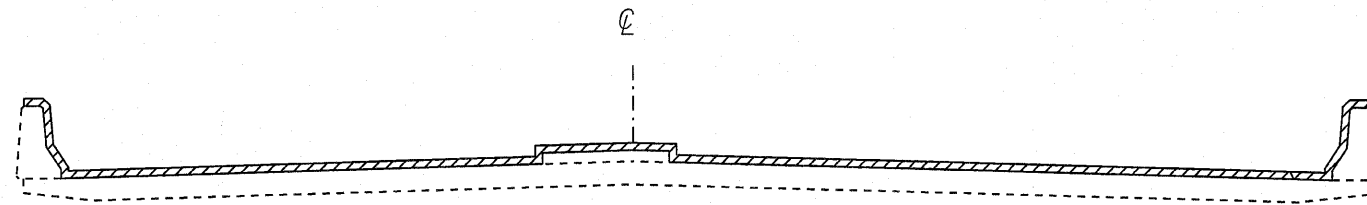


LIMITS OF BRIDGE DECK SEALING
END TO END OF DECK



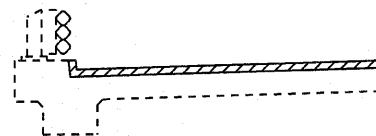
PLAN VIEW



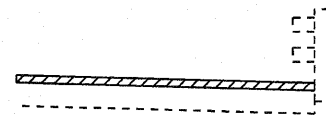
SECTION WITH
PARAPET AND MEDIAN

NOTE: BRIDGE APPROACH PAVEMENT
SHALL NOT BE SEALED

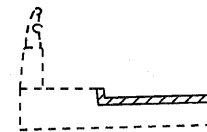
Existing pavement markings shall be temporarily covered prior to application of the deck surface treatment, to prevent the material from being applied to the markings. The temporary covering shall be removed after the application of the deck surface treatment and prior to opening to traffic. Cost is included with Concrete Sealer.



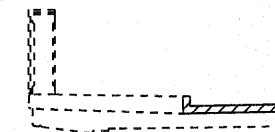
SECTION WITH CURB AND
TUBULAR THRIE BEAM RETROFIT RAIL



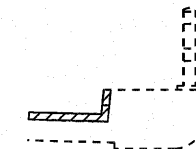
SECTION WITH
BRIDGE RAIL



CONCRETE AND
ALUMINUM RAILING




CONCRETE
BRIDGE RAILING



BRIDGE RAIL

VARIOUS SECTIONS WITH SIDEWALK AND/OR CONCRETE CURB

 AREA TO BE SEALED

NOT TO SCALE

FILE NAME =	USER NAME = verdneml	DESIGNED -	REVISED -	STATE OF ILLINOIS DEPARTMENT OF TRANSPORTATION	BRIDGE AND PARAPET SEALING DETAILS			F.A. RTE.	SECTION	COUNTY	TOTAL SHEETS	SHEET NO.
c:\pwork\pwork\verdneml\0190405\DeckSealing_11.dgn		DRAWN -	REVISED -					VAR	*	VARIOUS	8	8
PLOT SCALE = 50.0000' / IN.		CHECKED -	REVISED -		* 03 BRIDGE DECK SEALING 2011			CONTRACT NO. 66A59				
PLOT DATE = Oct 14, 2010 - 09:06:09 AM		DATE -	REVISED -		SCALE: NONE	SHEET NO.	OF	SHEETS	STA.	TO STA.	ILLINOIS FED. AID PROJECT	