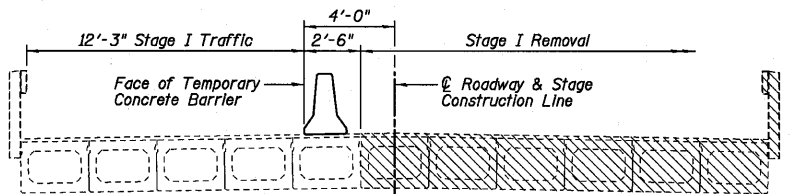
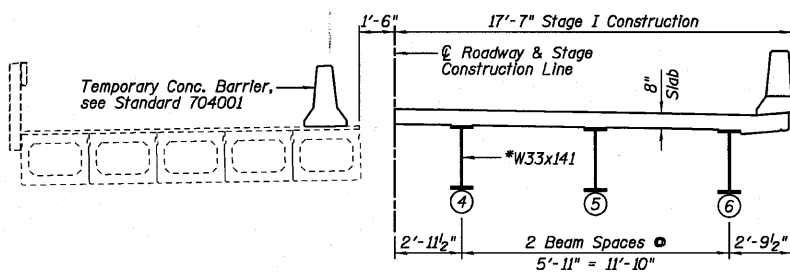


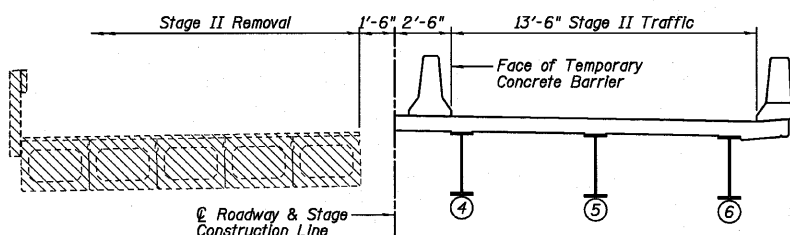
STATE OF ILLINOIS
DEPARTMENT OF TRANSPORTATION



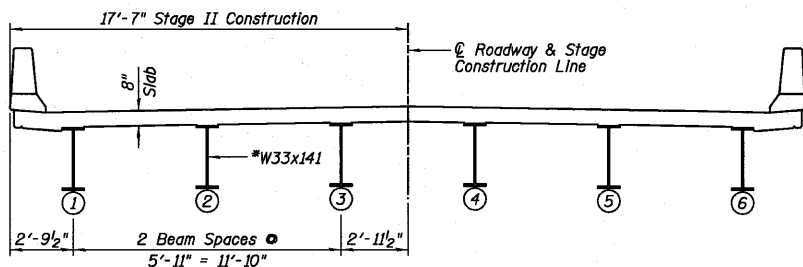
STAGE I REMOVAL
(Looking South • \odot of Bridge)



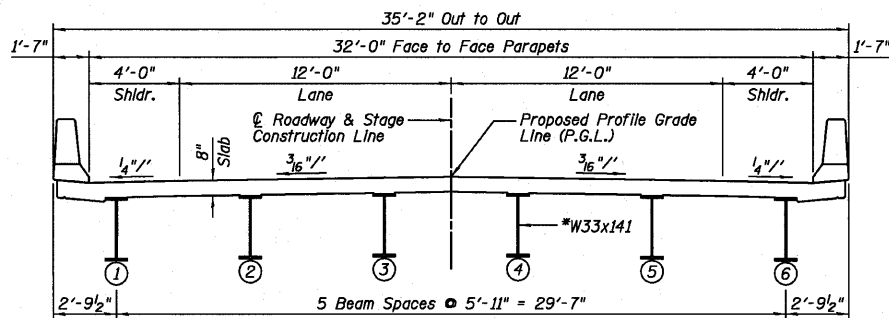
STAGE I CONSTRUCTION
(Looking South • \odot of Bridge)



STAGE II REMOVAL
(Looking South • \odot of Bridge)



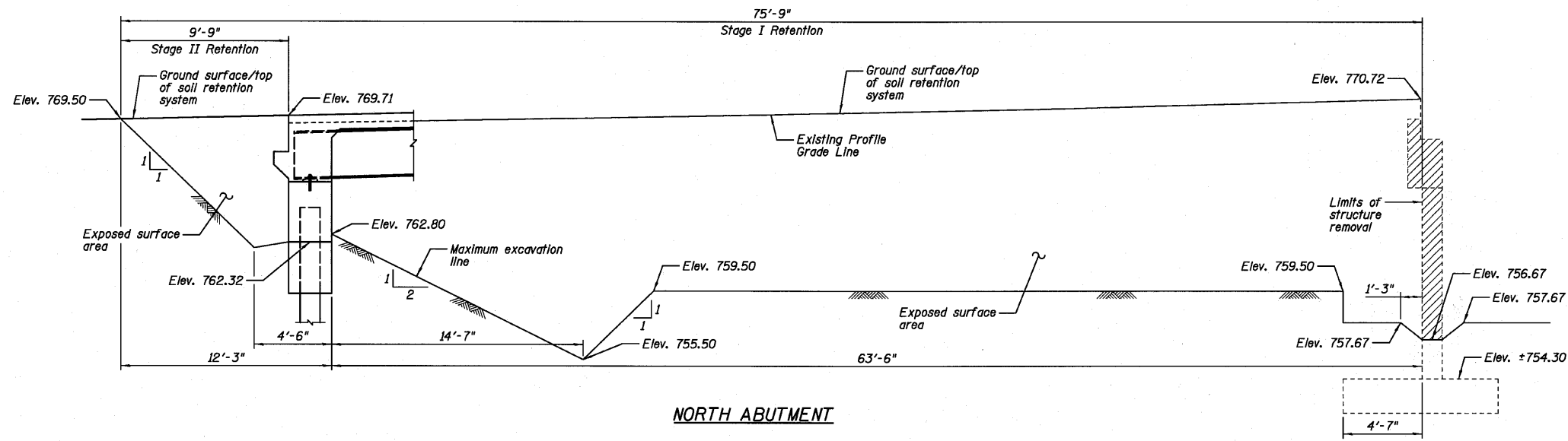
STAGE II CONSTRUCTION
(Looking South • \odot of Bridge)



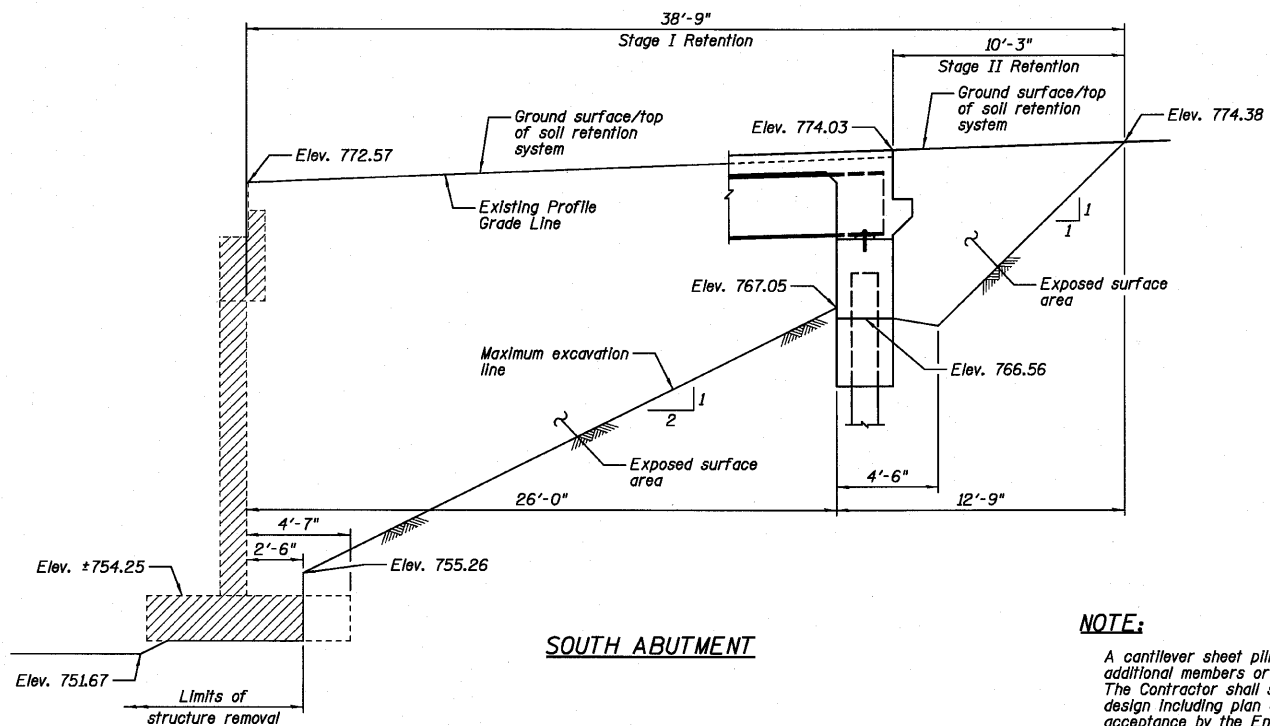
CROSS SECTION
(Looking South • \odot of Bridge)

DESIGNED	SDH
CHECKED	JML
DRAWN	DJM
CHECKED	MSW

DATE 10/08/10



NORTH ABUTMENT



SOUTH ABUTMENT

TEMPORARY SOIL RETENTION SYSTEM

NOTE:

A cantilever sheet piling design does not appear feasible and additional members or other retention systems may be necessary. The Contractor shall submit a temporary soil retention system design including plan details and calculations for review and acceptance by the Engineer.

BILL OF MATERIAL

Item	Unit	Total
Temporary Soil Retention System	Sq. Ft.	1,149

NOTES:

- *Composite in positive moment region only.
- Hatched area indicates Removal of Existing PPC Deck Beam Superstructure. Removal of the existing bituminous wearing surface shall be included with Removal of Existing Structures.
- See Sheet B4 for Temporary Concrete Barrier (Standard 704001). See roadway plans for quantity.

Farnsworth GROUP, INC.
2709 McGraw Drive
Bloomington, Illinois 61704
309/663-8435, 309/663-1571 fax

SHEET NO. B3
23 SHEETS

F.A.P. RTE.	SECTION	COUNTY	TOTAL SHEETS	SHEET NO.
698	(101 BR)BR	BUREAU	47	17
CONTRACT NO. 66910				
FED. ROAD DIST. NO.	ILLINOIS	FED. AID PROJECT		

**STAGE CONSTRUCTION
STRUCTURE NO. 006-0181**