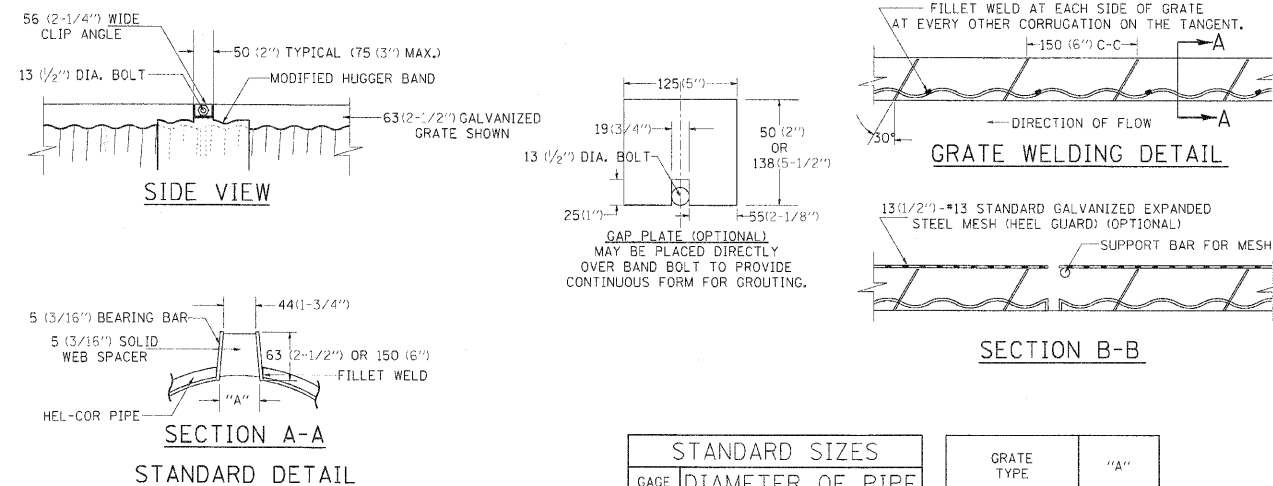
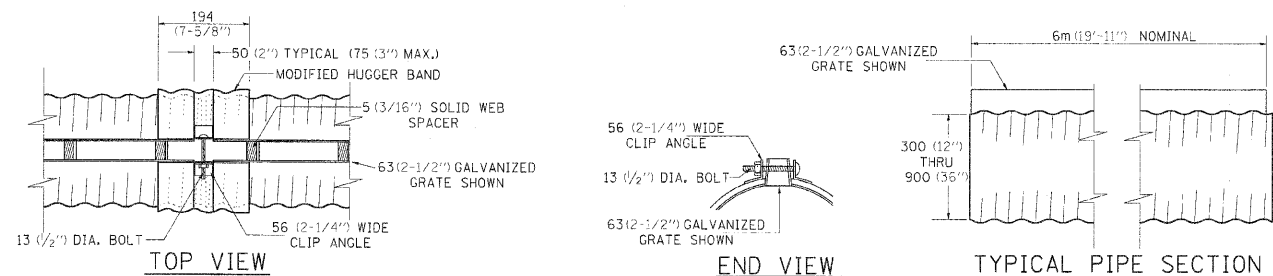


SLOTTED DRAIN PIPE



STANDARD SIZES		GRATE TYPE	
GAGE OF PIPE	DIAMETER OF PIPE	VERT	"A"
16	300 (12")	63 (2-1/2")	44 (1-3/4")
14	375 (15")	150 (6")	44 (1-3/4")
12	450 (18")	63 (2-1/2")	56 (2-1/4")
	600 (24")	150 (6")	75 (3")
	750 (30")		
	900 (36")		
		VERT = VERTICAL	
		TRAP = TRAPEZOIDAL	

- SLOTTED DRAIN NOTES**
- GRATING IS AVAILABLE IN DEPTHS OF 63 (2-1/2") AND 150 (6").
 - VERTICAL GRATING (STRAIGHT SIDES) WITH VERTICAL SPACERS IS ALSO AVAILABLE.
 - FOR 150 (6") VERTICAL & TRAPEZOIDAL REQUIREMENTS, THE SLOTTED DRAIN BAND MAY BE FURNISHED WITH THE 100 (4") TECHCO BAND ANGLE.
 - DIMENSIONS ARE SUBJECT TO MANUFACTURING TOLERANCES.
 - REFERENCE CONTECH BAND MANUAL DWG. NO. 1008466 FOR BAND DETAILS.
- MANUFACTURING TOLERANCES**
- VERTICAL BOW ± 10 (3/8")
 - HORIZONTAL BOW ± 16 (5/8")
 - TWIST ± 13 (1/2")

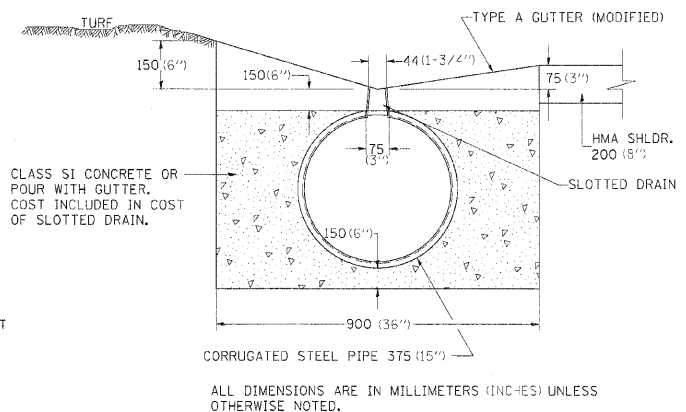
NOTES

CLASS SI CONCRETE SHALL BE USED THROUGHOUT.

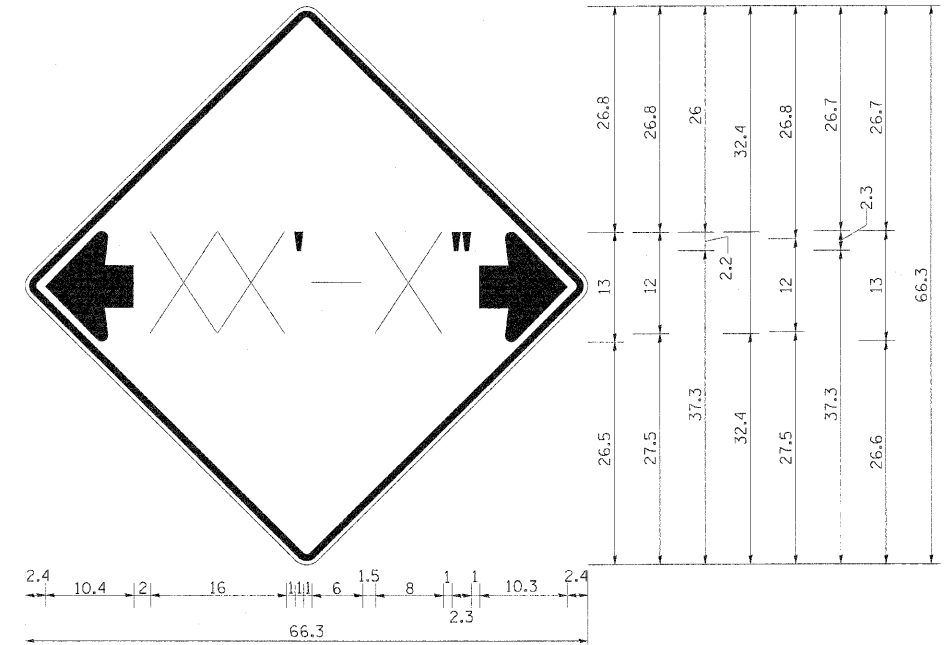
THE SLOTTED DRAIN SHALL BE CORRUGATED PIPE CULVERT WITH INTEGRAL SLOTTED DRAINS. BEFORE PLACING THE CONCRETE ADJACENT TO THE PIPE, THE SLOT SHALL BE COVERED BY EITHER THIN, FLAT METAL SHEETING OR BY A BOARD NOTCHED TO FIT OVER THE GRATE BARS. THIS COVERING MUST FIT CLOSELY IN THE SLOT TO PREVENT ENTRY OF CONCRETE INTO THE PIPE. PAVING OVER THE SLOTTED DRAIN WILL THEN BE ONE CONTINUOUS OPERATION OVER THE PROTECTED DRAIN. THE PROTECTION FOR THE DRAIN SLOT SHALL THEN BE REMOVED. THE PIPE SHALL DRAIN INTO THE SIDE OF THE INLET. THE OPENING WHERE THE SLOT IS REMOVED SHALL BE COVERED TO PREVENT CONCRETE FROM ENTERING THE PIPE.

THE CORRUGATED STEEL PIPE USED IN THE SLOTTED DRAIN SHALL MEET THE REQUIREMENTS OF AASHTO M-36/ASTM A 760. THE CMP SHALL BE GALVANIZED OR ALUMINIZED STEEL TYPE 2. STEEL GRATING SHALL MEET THE GALVANIZING REQUIREMENTS OF AASHTO M-111. THIS WORK WILL BE PAID FOR AT THE CONTRACT UNIT PRICE PER FOOT FOR SLOTTED DRAIN PIPE, AND SHALL INCLUDE ELBOWS.

USE APPROVED END CAP TO PREVENT CONCRETE ENTRY INTO THE PIPE DURING GUTTER CONSTRUCTION ON THE UPSTREAM END OF PIPE.

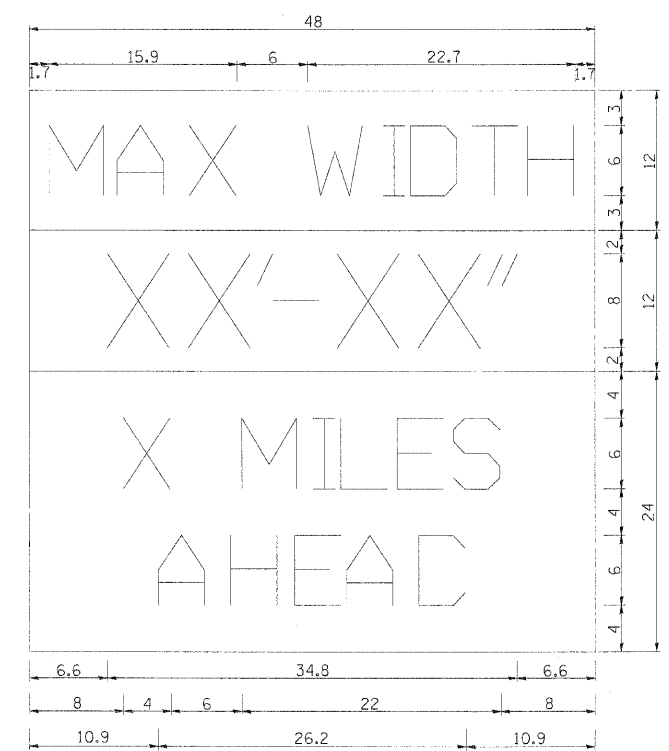


INFORMATIONAL WARNING SIGN (FOR NARROW TRAVEL LANES)



NOTES

W12-2 - Horizontal Clearance Sign
48.0" across sides, 1.9" Radius,
0.8" Border, 0.5" Indent, Black on
Orange; Standard Arrow Custom
10.4" X 8.1" 180° Black 11 Inch
D Series Lettering; Standard Arrow
Custom 10.4" X 8.1" 0°



W12-1103 (Width is 8D);
No border, Black on White;
[MAX WIDTH] D;

No border, Black on Orange;
[XX'-XX''] D;

No border, Black on White;
[X MILES] D; [AHEAD] D;

All work to furnish and install these signs shall be included in the cost of the Traffic Control Standards and shall not be paid for separately.

ALL DIMENSIONS ARE IN INCHES UNLESS OTHERWISE NOTED.

REVISED - 5-15-09

SLOTTED DRAIN PIPE 61.2

INFORMATIONAL WARNING SIGNS (FOR NARROW TRAVEL LANES) 39.2

FILE NAME = D264815-shd-02-Details02.dgn	USER NAME = Pop02036	DESIGNED =	REVISED =	STATE OF ILLINOIS DEPARTMENT OF TRANSPORTATION	REGION 2 /DISTRICT 2 STANDARD	F.A.I. RTE. 280	SECTION 81-11B-1, 11B-1, 11B-2, 11B-1, 11B-2, 11B-1, 11B-2	COUNTY ROCK ISLAND	TOTAL SHEETS 503	SHEET NO. 458
MODEL NAME =	PLOT SCALE = 50.0000 1" = 50'	DRAWN =	REVISED =							
	PLOT DATE = 06/19/2010	CHECKED =	REVISED =							
D2 Detail 02		DATE = 07/23/10	REVISED =			SCALE:	SHEET NO. OF SHEETS STA. TO STA.	CONTRACT NO. 64815		