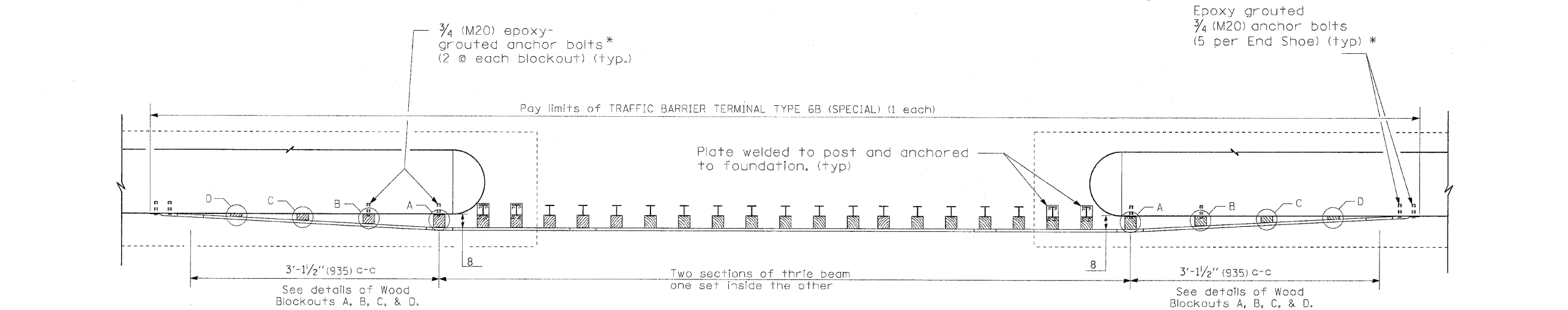
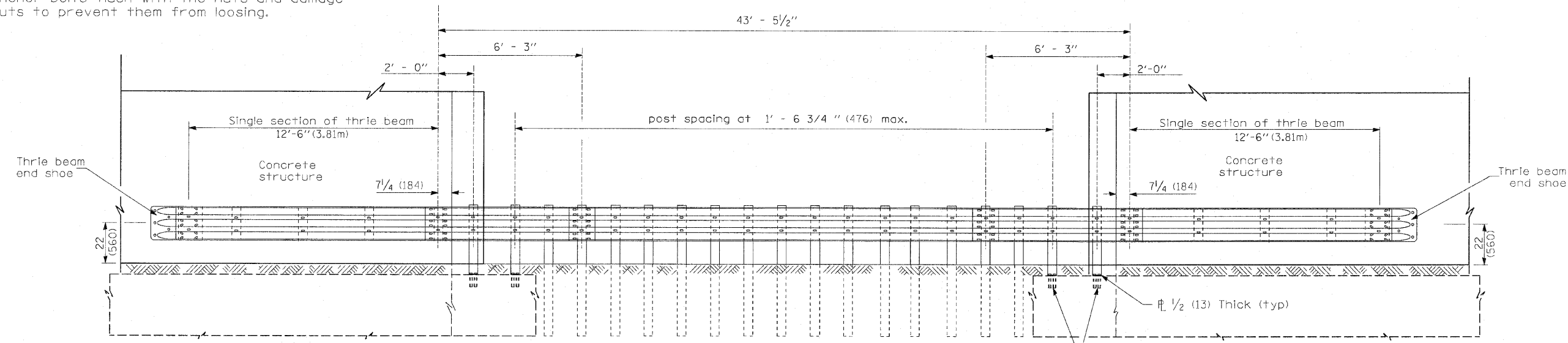


TRAFFIC BARRIER TERMINAL, TYPE 6B (SPECIAL)



PLAN

* With standard washers. After tightening, cut the anchor bolts flush with the nuts and damage the nuts to prevent them from losing.



ELEVATION

GENERAL NOTES

This work shall be done according to Section 631 of the Standard Specifications and this detail.

See Standard 630001 for details of guardrail not shown.

Thrie beam rail shall be bolted to block-out at all posts.

Posts located above pier foundation shall have plate attached to post and anchored to foundation.

All slope ratios are expressed as units of vertical displacement to units of horizontal displacement (V:H).

All dimensions are in inches (millimeters) unless otherwise shown.

The Traffic barrier Terminal, Type 6B (Special) will be measured for payment, complete in place, in units of each.

This work shall be paid for at the contract unit price per each for TRAFFIC BARRIER TERMINAL, TYPE 6B (SPECIAL).

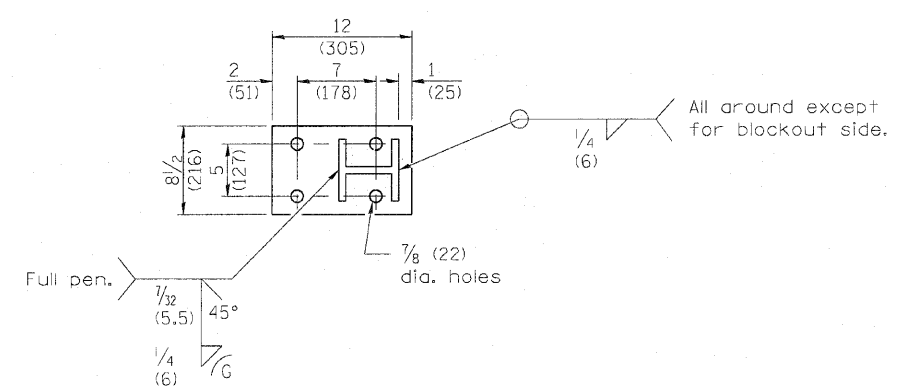


PLATE DETAIL

DISTRICT STANDARD 90.1 SHEET 1 OF 2

* 81-1(B-1, HB, HB-1, HB-2, VB, VB-1)R

FILE NAME = ca\pw\work\pwsdot\condermanee\d017917\0264815-shd-details-ty6B.dgn	USER NAME = condermanee	DESIGNED -	REVISED -	STATE OF ILLINOIS DEPARTMENT OF TRANSPORTATION	REGION 2 /DISTRICT 2 STANDARD					F.A.I. RTE.	SECTION	COUNTY	TOTAL SHEETS	SHEET NO.
		DRAWN -	REVISED -			280	*	ROCK ISLAND	503	455				
		CHECKED -	REVISED -			CONTRACT NO. 64815								
		DATE - 11-09-2010	REVISED -											
						SCALE:	SHEET NO.	OF	SHEETS	STA.	TO STA.	ILLINOIS FED. AID PROJECT		