

STATE OF ILLINOIS  
DEPARTMENT OF TRANSPORTATION

Calculated weight of Structural Steel = 309,080 W.B.L.  
308,657 F.B.L.

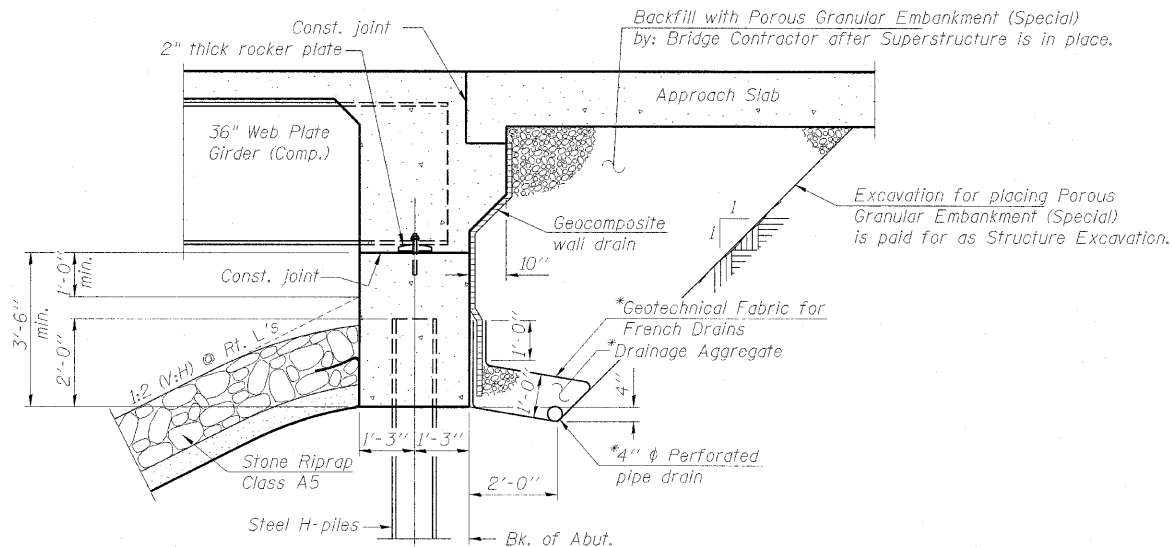
No field welding is permitted except as specified in the contract documents.

Reinforcement bars designated (E) shall be epoxy coated.

Structural steel shall only be painted for a distance equal to the depth of embedment into the concrete cap plus 3 inches. Painted areas shall be primed in the shop with a Department approved zinc rich primer. Field painting will not be required.

The embankment configuration shown shall be the minimum that must be placed and compacted prior to construction of the abutments.

*The Contractor shall obtain a construction permit from the Illinois Department of Natural Resources (IDNR), Office of Water Resources for any temporary construction activity placed in the water except cofferdams. This shall include the placement of material for run-arounds, causeways, etc. Any permit application by the Contractor shall refer to the IDNR 3704 Floodway Construction permit number allowing permanent construction as shown in the contract plans.*



(Horiz. dim. @ Rt. L's)

SECTION A - A

- 1 General Plan
- 2 General Data
- 3 Substructure Layout
- 4-8 Top of Slab Elevations
- 9-12 Top of Slab Elevations - Approach Slabs
- 13-15 Superstructure Details - W.B.L.
- 16-18 Superstructure Details - E.B.L.
- 19-21 Bridge Approach Slab Details
- 22-23 Structural Steel Details - W.B.L.
- 24-25 Structural Steel Details - E.B.L.
- 26 Bearing Details
- 27 West Abutment - W.B.L.
- 28 East Abutment - W.B.L.
- 29 West Abutment - E.B.L.
- 30 East Abutment - E.B.L.
- 31 Existing Pier Concrete Removal Details
- 32 Pier - W.B.L.
- 33 Pier - E.B.L.
- 34 Bar Splicer Assembly and Mechanical Splicer Details
- 35 HP Pile Details
- 36 Concrete Parapet Slipform Option
- 37-40 Borings (Sheet 1 thru 4)

NAME PLATE - E.B.L.  
See Std. 515001

NAME PLATE - W.B.L.  
See Std. 515001

All drainage system components shall extend to 2'-0" from the end of each wingwall except an outlet pipe shall extend until intersecting with the side slope. The pipes shall drain into concrete headwalls. (See Article 601.05 of the Standard Specifications and Highway Standard 601101)

STRUCTURE NUMBERS 081-0026 (E.B.) & 081-0027 (W.B.)

[illegible]

F.A. RTE.	SECTION	COUNTY	TOTAL SHEETS	SHEET NO.
280	81- 11B- 11R	Rock Island	503	415
		CONTRACT NO. 64815		
ILLINOIS		FED. AID PROJECT		