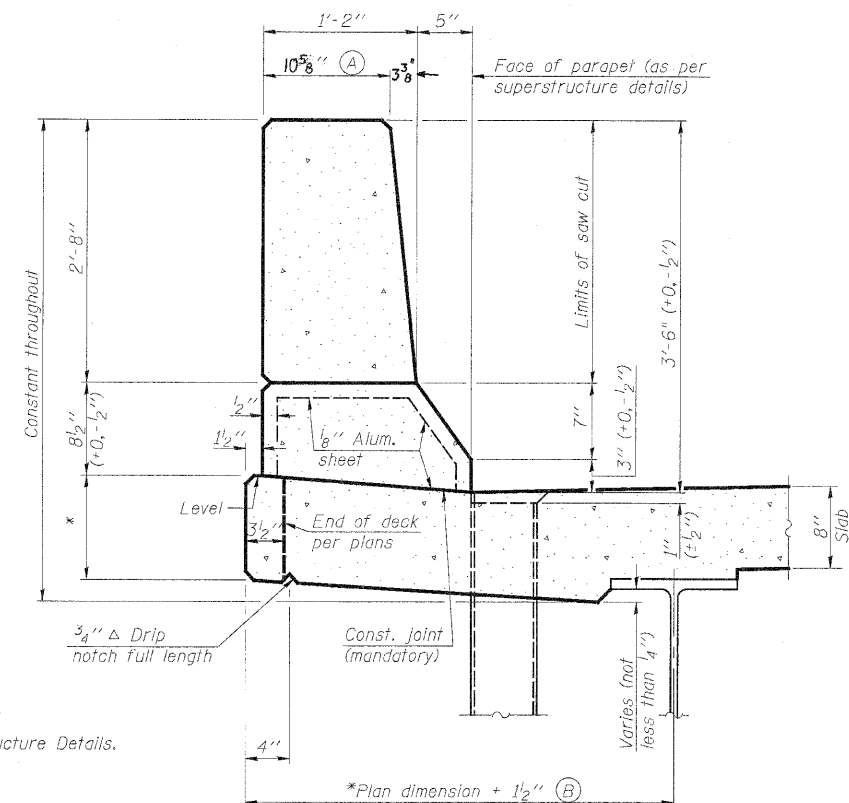
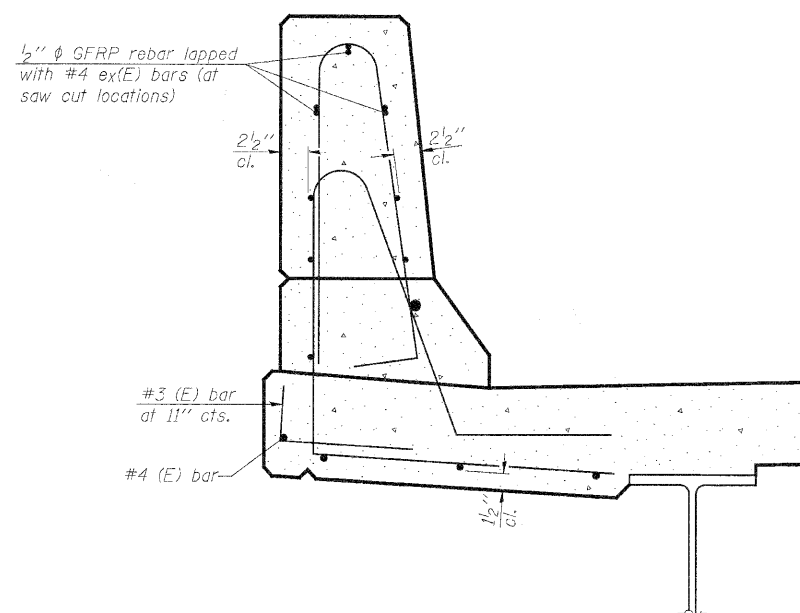


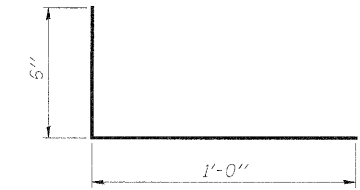
STATE OF ILLINOIS
DEPARTMENT OF TRANSPORTATION



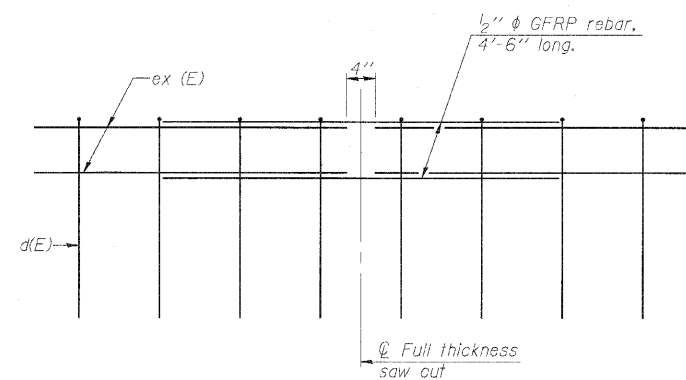
SECTION
(Showing dimensions)



SECTION
(Showing reinforcement clearances for slip forming and additional reinforcement bars)



#3 (E) BAR



GFRP REBAR STIFFENING DETAIL
(Place as shown in parapet section at each parapet joint location.)

GENERAL NOTES

All dimensions shall remain the same as shown on superstructure details, except dimensions A and B which are to be revised as shown to provide additional clearance. Additional concrete needed to revise dimension A and B = 0.0218 cu. yds./ft. of parapet.
Place aluminum sheet in curb portion at and near piers. Full thickness saw cut at all joint locations in lieu of cork joint filler.
Steel superstructure shown. Other superstructure types similar.

**CONCRETE PARAPET
SLIPFORMING OPTION**

**STRUCTURE NO. 081-0024 (E.B.)
STRUCTURE NO. 081-0025 (W.B.)**

DESIGNED
CHECKED
DRAWN ASJ
CHECKED SPK



**INFRASTRUCTURE
ENGINEERING** | INCORPORATED
33 West Monroe | Suite 1540 | Chicago, IL 60603
P 312.425.9560 | F 312.425.9564 | www.infrastructure-eng.com

SHEET NO. 72 77 SHEETS	F.A.I. RTE.	SECTION	COUNTY	TOTAL SHEETS	SHEET NO.
	280	81-1(VB-1)R	ROCK ISLAND	503	408
	CONTRACT NO. 64815				
FED. ROAD DIST. NO. _ ILLINOIS FED. AID PROJECT					

1719
7/22/2010
12:37:17 PM
P:\S-05\1719\00N\Sheets\New Interstate RR Final Plans\0810024 64815 072-Slipform.dgn