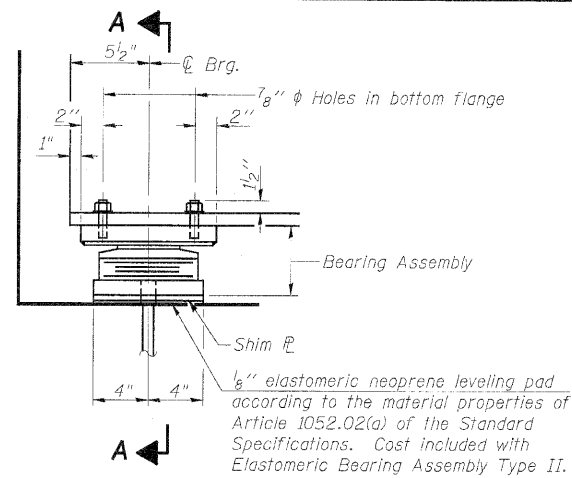
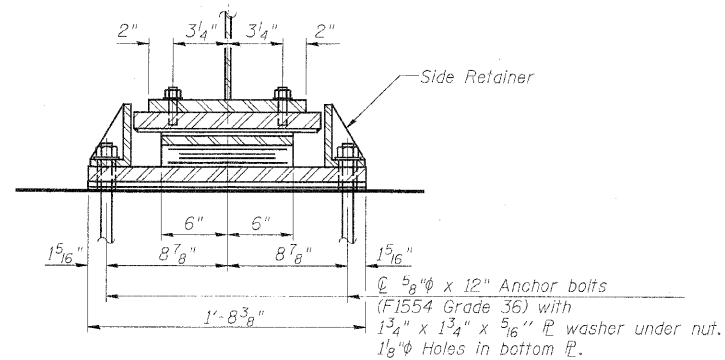
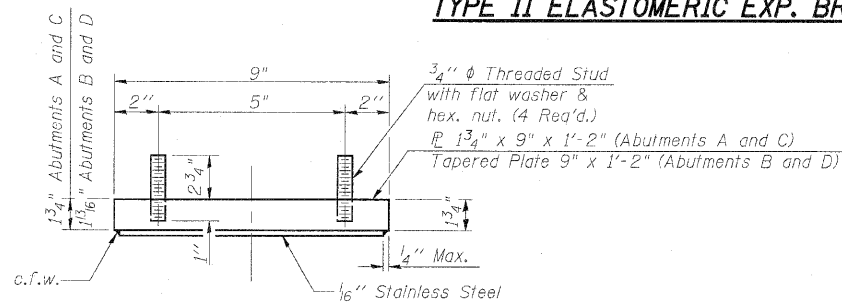


STATE OF ILLINOIS
DEPARTMENT OF TRANSPORTATION

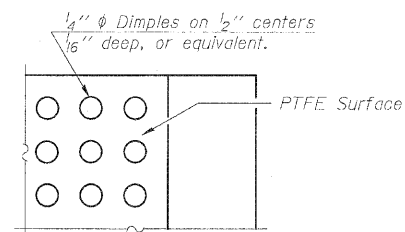
ELEVATION AT ABUT.

SECTION A-A

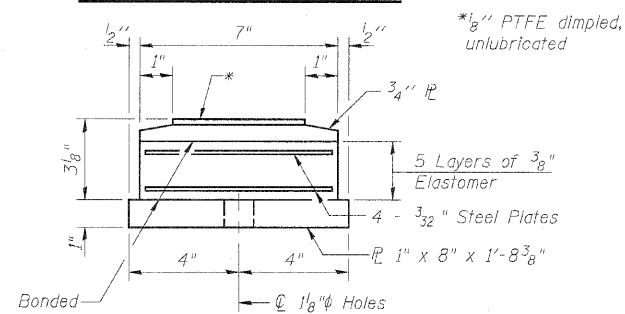
TYPE II ELASTOMERIC EXP. BRG.



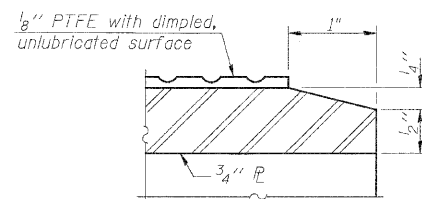
TOP BEARING ASSEMBLY



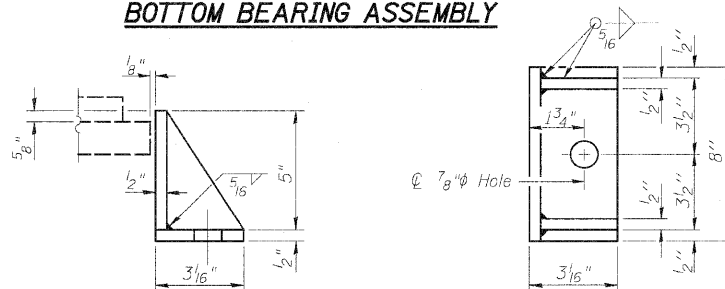
PLAN-PTFE SURFACE



BOTTOM BEARING ASSEMBLY

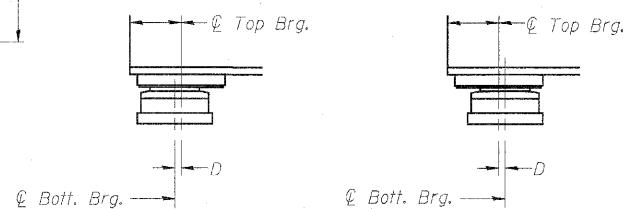


SECTION THRU PTFE



SIDE RETAINER

Equivalent rolled angle with stiffeners
will be allowed in lieu of welded plates.



<u>BELOW 50°F.</u>	<u>ABOVE 50°F.</u>
(Move bott. brg. away from fixed brg.)	(Move bott. brg. toward fixed brg.)

SETTING ANCHOR BOLTS AT EXP. BRG.

$D = \frac{1}{8}''$ per each 100' of expansion for every 15° temp. change from the normal temp. of 50°F.

DESIGNED	SST
CHECKED	SPK
DRAWN	ASJ
CHECKED	SPK

Notes:

Anchor bolts shall be ASTM F1554 all-thread (or an Engineer-approved alternate material) of the grade(s) and diameter(s) specified. ASTM A307 Grade C anchor bolts may be used in lieu of ASTM F1554 Grade 36 (Fy=36ksi). The corresponding specified grade of AASHTO M31 anchor bolts may be used in lieu of ASTM F1554.

Anchor bolts for Type II bearings shall be placed in holes drilled in the concrete through holes in the bottom bearing plate after members are in place. Side retainers shall be placed after bolts are installed.

Drilled and set anchor bolts shall be installed according to Article 521.06 of the Standard Specifications.

Side retainers and other steel members required for the bearing assembly shall be included in the cost of Elastomeric Bearing Assembly, Type II.

The 1/8" PTFE sheet shall be bonded directly to the top steel plate with a two-component, medium viscosity epoxy resin, conforming to the requirements of the Federal Specification MMM-A-134, Type I. The bond agent shall be applied on the full area of the contact surfaces.

Bonding of 1/8" PTFE sheet during vulcanizing process will be permitted provided the process and method of adjusting assembly height is approved by the Engineer.

Two 3" adjusting shims shall be provided for each bearing in addition to all other plates or shims and placed as shown on bearing details.

BILL OF MATERIAL

Item	Unit	Total
Elastomeric Bearing Assembly Type II	Each	4
Anchor Bolts, $\frac{5}{8}$ "	Each	8

BEARING DETAILS - ABUTMENTS

STRUCTURE NO. 081-0024 (W.B.)

STRUCTURE NO. 081-0025 (E.B.)

SHEET NO. 38	F.A.I. RTE.	SECTION	COUNTY	TOTAL SHEETS	SHEET NO.
	280	81-1(VB-1)R	ROCK ISLAND	503	374
	77 SHEETS		CONTRACT NO. 64815		
FED. ROAD DIST. NO. - ILLINOIS FED. AID PROJECT					



**INFRASTRUCTURE
ENGINEERING | INCORPORATED**

33 West Monroe | Suite 1540 | Chicago, IL 60603
P 312.425.9560 | F 312.425.9564 | www.infrastructure-eng.com