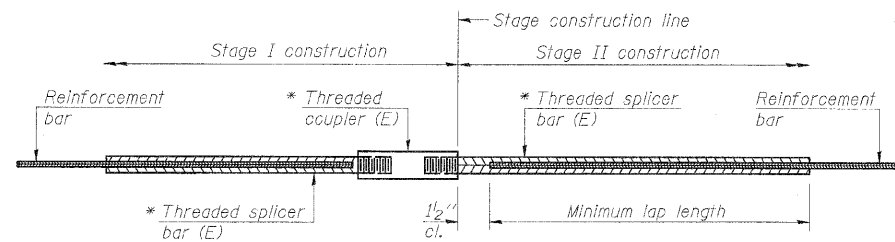


1719  
11/22/2010  
P:\NF-08\1719\CON Sheets\US 67 Final Plans\0810022-64815-040-Splicer.dgn

STATE OF ILLINOIS  
DEPARTMENT OF TRANSPORTATION



**STANDARD BAR SPLICER ASSEMBLY**

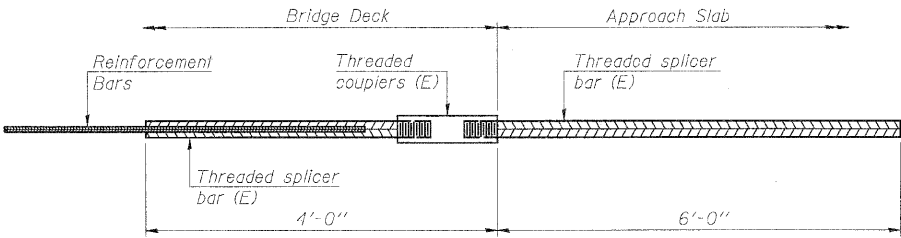
Minimum Lap Lengths				
Bar size to be spliced	Table 1	Table 2	Table 3	Table 4
3, 4	1'-5"	1'-11"	2'-1"	2'-4"
5	1'-9"	2'-5"	2'-7"	2'-11"
6	2'-1"	2'-11"	3'-1"	3'-6"
7	2'-9"	3'-10"	4'-2"	4'-8"
8	3'-8"	5'-1"	5'-5"	6'-2"
9	4'-7"	6'-5"	6'-10"	7'-9"

Table 1: Black bar, 0.8 Class C  
Table 2: Black bar, Top bar lap, 0.8 Class C  
Table 3: Epoxy bar, 0.8 Class C  
Table 4: Epoxy bar, Top bar lap, 0.8 Class C

Threaded splicer bar length = min. lap length + 1/2" + thread length

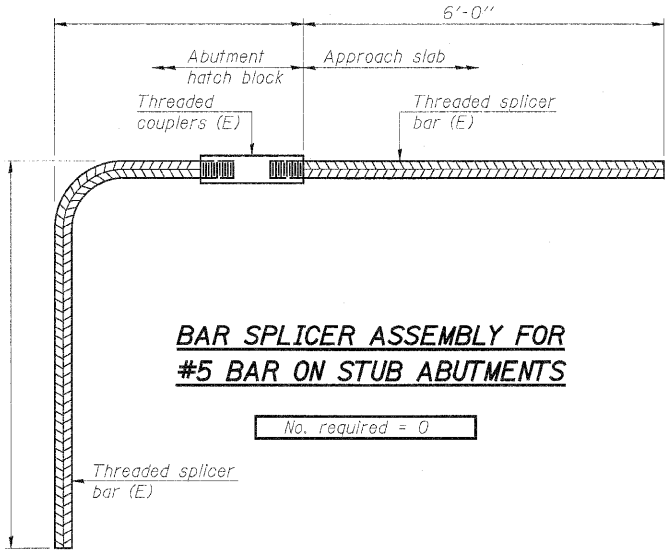
\* Epoxy not required on Bar Splicer Assembly components used in conjunction with black bars.

Location	Bar size	No. assemblies required	Table for minimum lap length



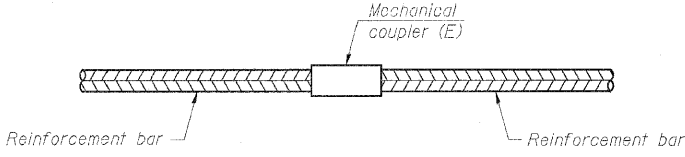
**BAR SPLICER ASSEMBLY FOR #5 BAR ON SEMI-INTEGRAL ABUTMENTS**

No. required = 184



**BAR SPLICER ASSEMBLY FOR #5 BAR ON STUB ABUTMENTS**

No. required = 0



**STANDARD MECHANICAL SPLICER**

Location	Bar size	No. assemblies required

**INSTALLATION AND SETTING METHODS**

"A" : Set bar splicer assembly by means of a template bolt.  
"B" : Set bar splicer assembly by nailing to wood forms or cementing to steel forms.  
(E) : Indicates epoxy coating.

**NOTES**

Splicer bars shall be deformed with threaded ends and have a minimum 60 ksi yield strength.  
All reinforcement shall be lapped and tied to the splicer bars.  
Bar splicer assemblies shall be epoxy coated according to the requirements for reinforcement bars. See Section 508 of the Standard Specifications.  
See special provision for Mechanical Splicers.  
See approved list of bar splicer assemblies and mechanical splicers for alternatives.

**BAR SPLICER ASSEMBLY AND MECHANICAL SPLICER DETAILS  
STRUCTURE NO. 081-0022 (E.B.)  
STRUCTURE NO. 081-0023 (W.B.)**

DESIGNED	-
CHECKED	-
DRAWN	ASJ
CHECKED	SPK

BSD-1 11-1-09

**INFRASTRUCTURE ENGINEERING** INCORPORATED  
33 West Monroe | Suite 1540 | Chicago, IL 60603  
P 312.425.9560 | F 312.425.9564 | www.infrastructure-eng.com

SHEET NO. 48	F.A.I. RTE.	SECTION	COUNTY	TOTAL SHEETS	SHEET NO.
	280	81-1(HB-2)R	ROCK ISLAND	503	330
CONTRACT NO. 64815					
FED. ROAD DIST. NO. ILLINOIS FED. AID PROJECT					