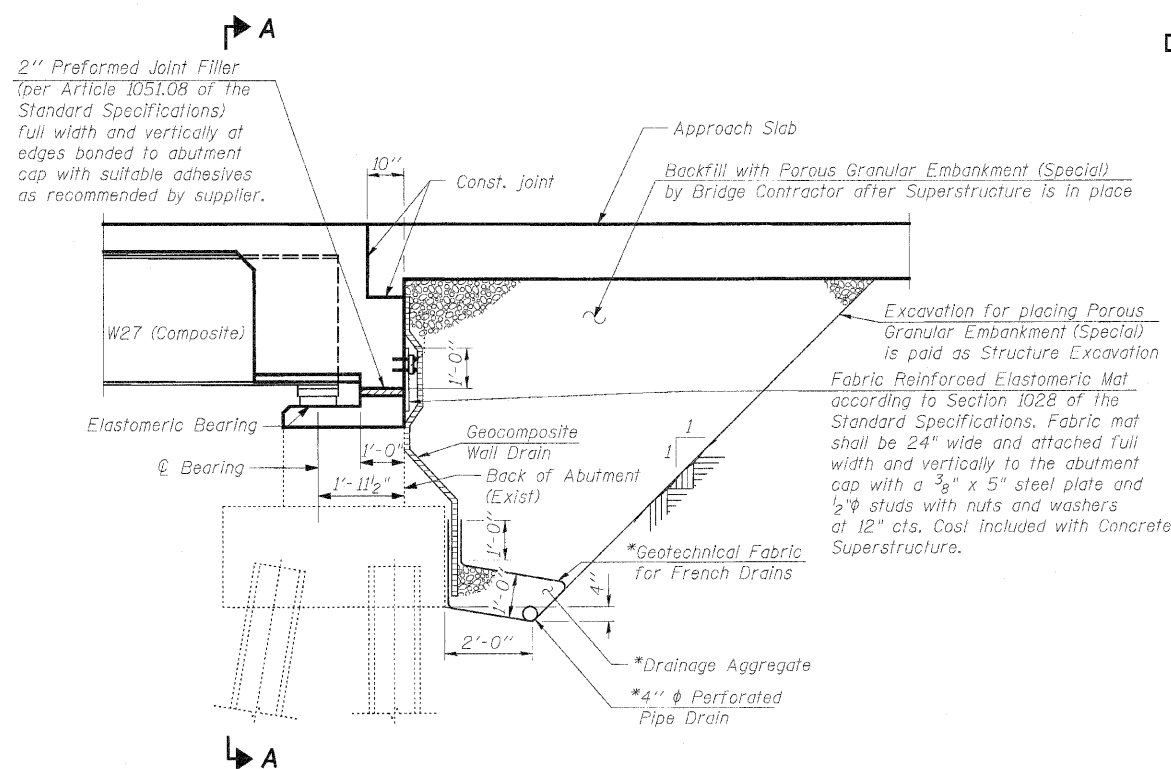
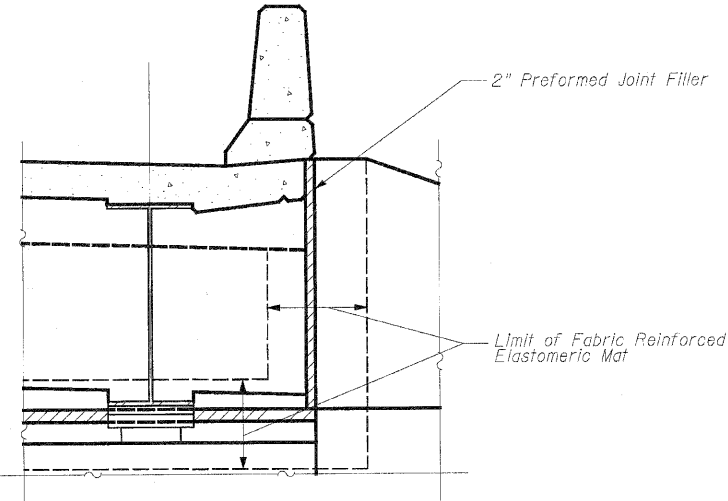


STATE OF ILLINOIS
DEPARTMENT OF TRANSPORTATION



TYPICAL ABUTMENT DRAINAGE DETAIL

*Included in the cost of Pipe Underdrains for Structures.



SECTION A-A

Note:
All drainage system components shall extend to 2'-0" from the end of each wingwall except an outlet pipe shall extend until intersecting with the side slopes. The pipe shall drain into concrete headwall. See Article 601.05 of the Standard Specifications and Highway Standard 601101.

DESIGNED
CHECKED
DRAWN ASJ
CHECKED SPK



**INFRASTRUCTURE
ENGINEERING** | INCORPORATED
33 West Monroe | Suite 1540 | Chicago, IL 60603
P 312.425.9580 | F 312.425.9584 | www.infrastructure-eng.com

SHEET NO. 36 54 SHEETS	F.A.I. RTE.	SECTION	COUNTY	TOTAL SHEETS	SHEET NO.
	280	81-1(HB-2)R	ROCK ISLAND	503	318
CONTRACT NO. 64815					
FED. ROAD DIST. NO. ILLINOIS FED. AID PROJECT					