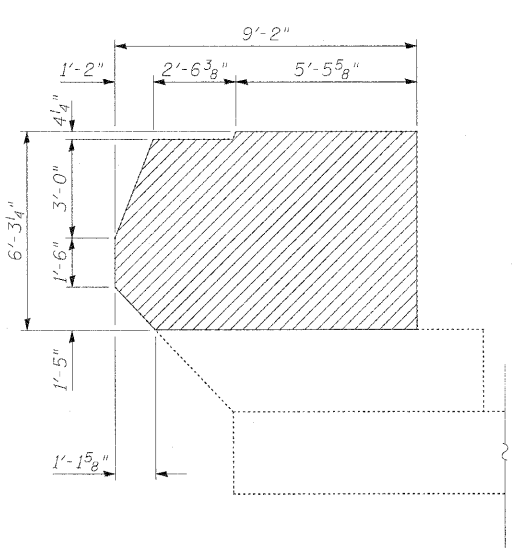
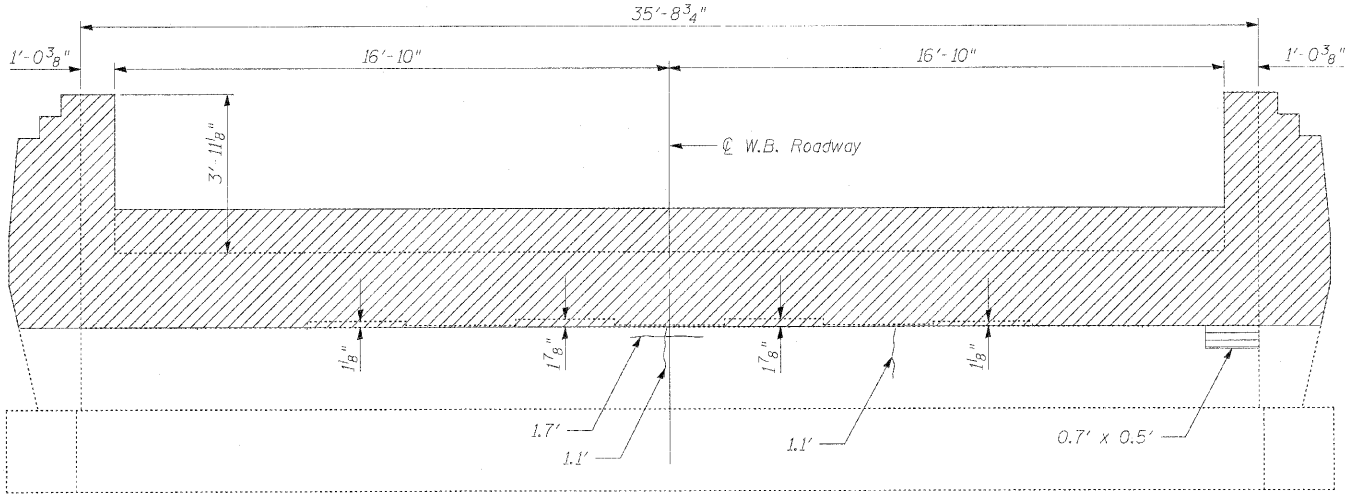


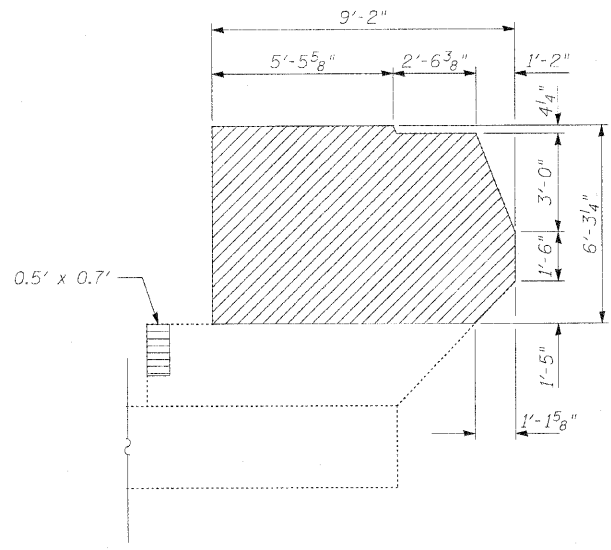
STATE OF ILLINOIS
DEPARTMENT OF TRANSPORTATION



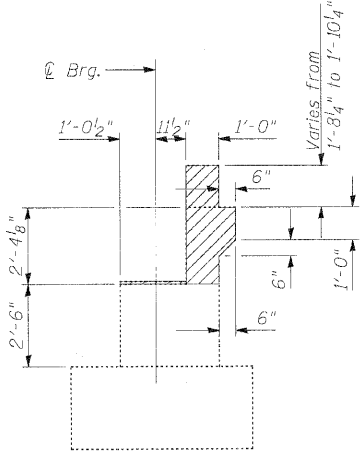
NORTH WINGWALL ELEVATION



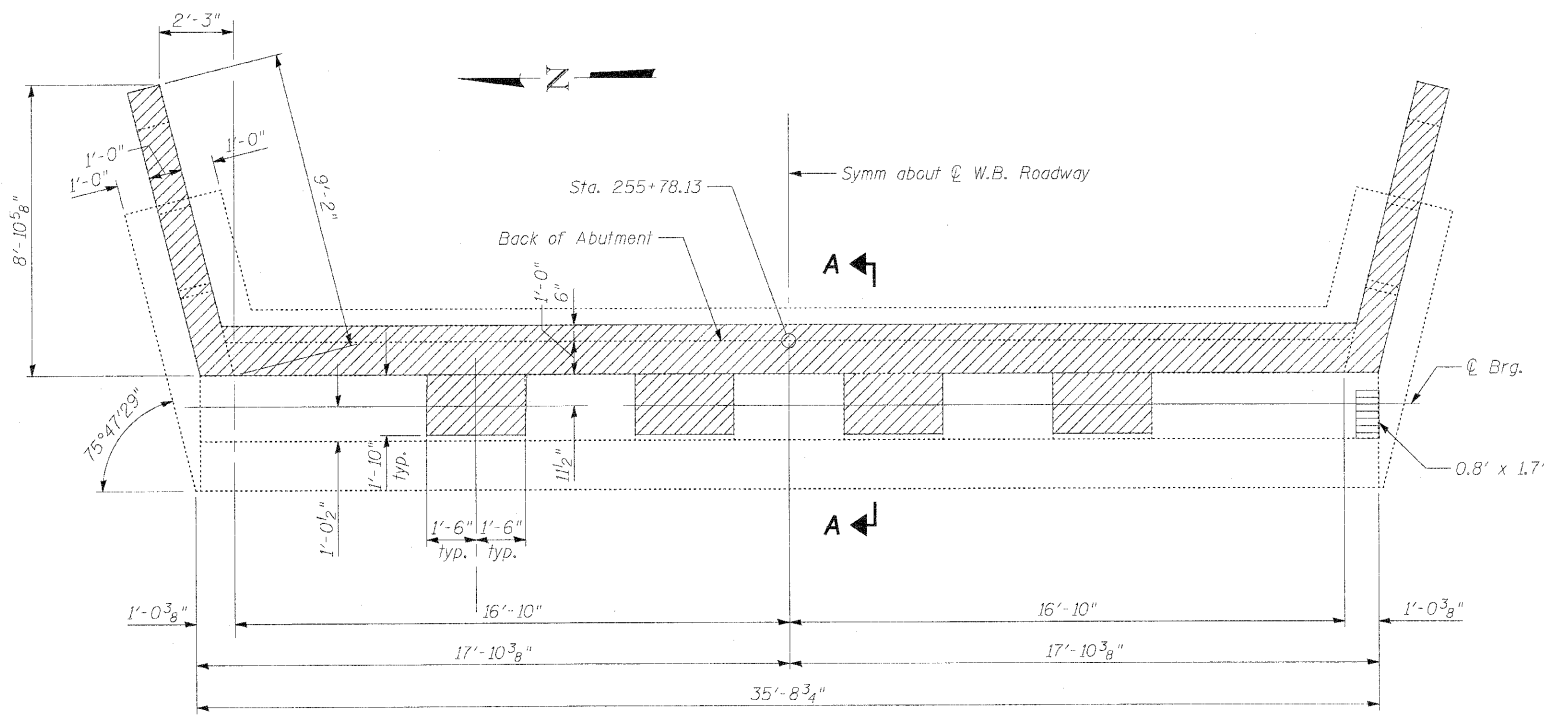
ELEVATION



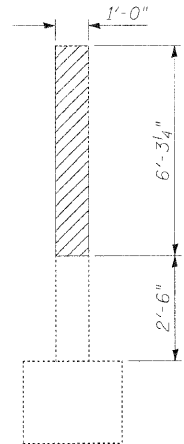
SOUTH WINGWALL ELEVATION



SECTION A-A



PLAN



SECTION THRU WINGWALL

BILL OF MATERIAL

ITEM	UNIT	QUANTITY
Concrete Removal	Cu. Yd.	9.9
Epoxy Crack Injection	Foot	4
Structural Repair of Concrete (Depth Equal to or Less Than 5 Inches)	Sq. Ft.	2

W.B. ROADWAY EAST ABUTMENT
CONCRETE REMOVAL & REPAIRS
STRUCTURE NO. 081-0022 (E.B.)
STRUCTURE NO. 081-0023 (W.B.)

Notes:
Existing reinforcement bars that project from the abutment after concrete removal shall be cut flush with the concrete left in place. Cost included with Concrete Removal.
Repair of the existing abutment shall include but not be limited to the areas shown. The actual areas to be repaired will be determined by the Engineer at the time of construction.

- Indicates limits of Concrete Removal
- Indicates limits of Structural Repair of Concrete (Depth Equal to or Less Than 5 Inches)
- Indicates limits of Epoxy Crack Injection

INFRASTRUCTURE
ENGINEERING | INCORPORATED
33 West Monroe | Suite 1540 | Chicago, IL 60603
P 312.425.9560 | F 312.425.9564 | www.infrastructure-eng.com

SHEET NO. 27	F.A.I. RTE.	SECTION	COUNTY	TOTAL SHEETS	SHEET NO.
54 SHEETS	280	81-1(HB-2)R	ROCK ISLAND	503	309
CONTRACT NO. 64815					
FED. ROAD DIST. NO. - ILLINOIS FED. AID PROJECT					