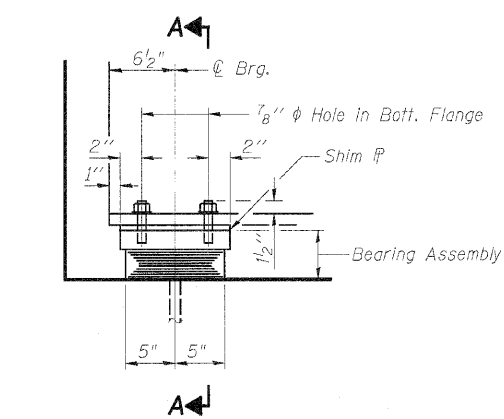
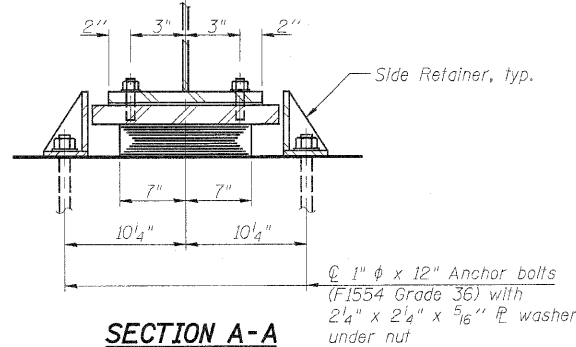


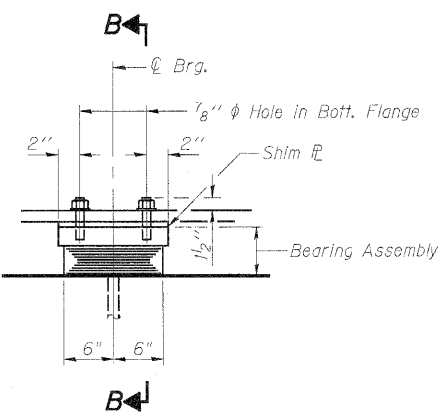
STATE OF ILLINOIS
DEPARTMENT OF TRANSPORTATION



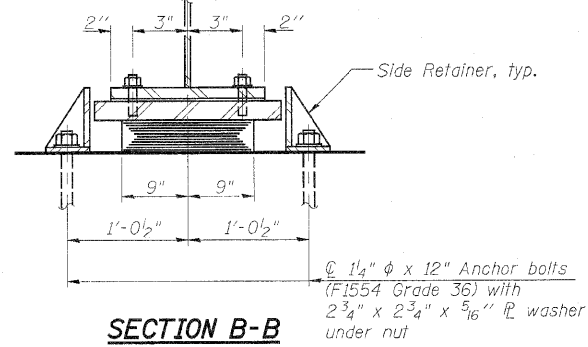
ELEVATION AT ABUTMENTS



SECTION A-A

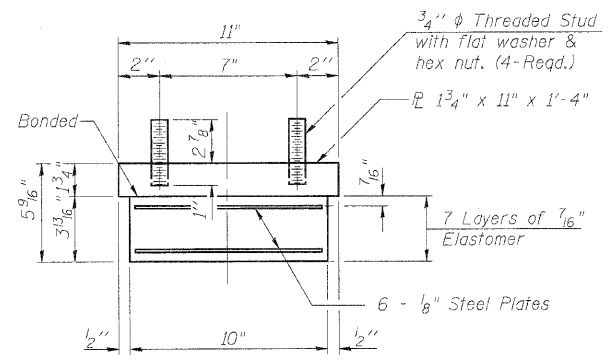


ELEVATION AT PIER 2 AND PIER 4



SECTION B-B

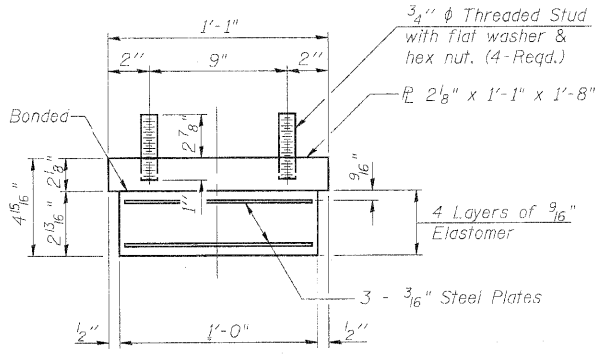
TYPE I ELASTOMERIC EXP. BRG.



BEARING ASSEMBLY

Notes:
Anchor bolts shall be ASTM F1554 all-thread (or an Engineer-approved alternate material) of the grade(s) and diameter(s) specified. ASTM A307 Grade C anchor bolts may be used in lieu of ASTM F1554 Grade 36 (Fy=36ksi). The corresponding specified grade of AASHTO M314 anchor bolts may be used in lieu of ASTM F1554.
Anchor bolts for side retainers may be cast in place or installed in holes drilled before or after members are in place.
Drilled and set anchor bolts shall be installed according to Article 521.06 of the Standard Specifications.
Side retainers and other steel members required for the bearing assembly shall be included in the cost of Elastomeric Bearing Assembly, Type I.
The structural steel plates of the Bearing Assembly shall conform to the requirements of AASHTO M270 Grade 50.
Two 1/8" adjusting shims shall be provided for each bearing in addition to all other plates or shims and placed as shown on bearing details.

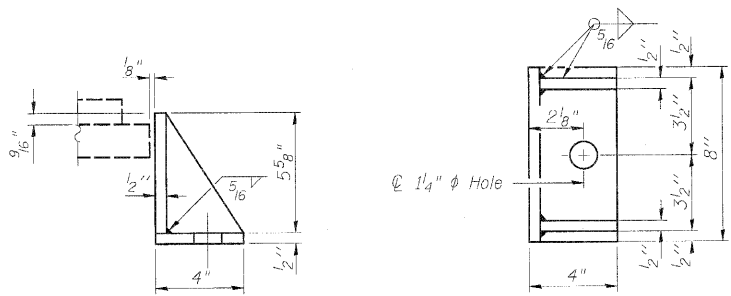
TYPE I ELASTOMERIC EXP. BRG.



BEARING ASSEMBLY

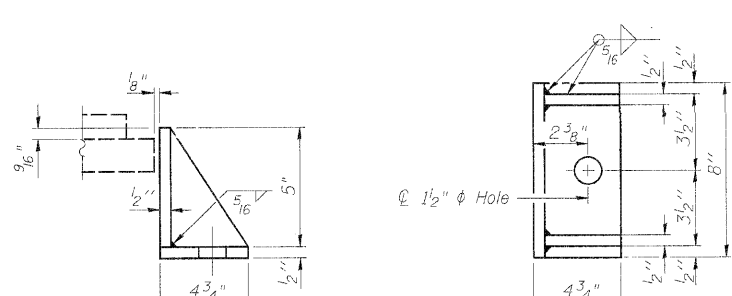
Note:
Shim plates shall not be placed under Bearing Assembly.

Note:
Shim plates shall not be placed under Bearing Assembly.



SIDE RETAINER AT ABUTMENTS

Equivalent rolled angle with stiffeners will be allowed in lieu of welded plates.



SIDE RETAINER AT PIER 2 & PIER 4

Equivalent rolled angle with stiffeners will be allowed in lieu of welded plates.

BILL OF MATERIAL

Item	Unit	Total
Elastomeric Bearing Assembly Type I	Each	36
Anchor Bolts 1"	Each	48
Anchor Bolts 1 1/4"	Each	24

BEARINGS - ABUTMENTS, PIER 2 & PIER 4
STRUCTURE NO. 081-0022 (E.B.)
STRUCTURE NO. 081-0023 (W.B.)

DESIGNED	SST
CHECKED	SPK
DRAWN	ASJ
CHECKED	SPK

INFRASTRUCTURE
ENGINEERING | INCORPORATED
33 West Monroe | Suite 1540 | Chicago, IL 60603
P 312.425.9560 | F 312.425.9564 | www.infrastructure-eng.com

SHEET NO. 22	F.A.I. RTE.	SECTION	COUNTY	TOTAL SHEETS	SHEET NO.
54 SHEETS	280	81-1(HB-2)R	ROCK ISLAND	503	304
CONTRACT NO. 64815					
FED. ROAD DIST. NO. _ ILLINOIS FED. AID PROJECT					

P:\P 25\17\9\IGN\Sheets\US 67 Final Plans\081-0022-64815-022-Brg. Details.dgn
11:58:15 AM
7/22/2010
-1719-