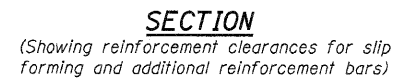


SECTION
(Showing dimensions)

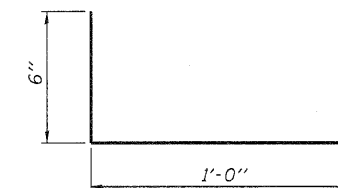


GENERAL NOTES

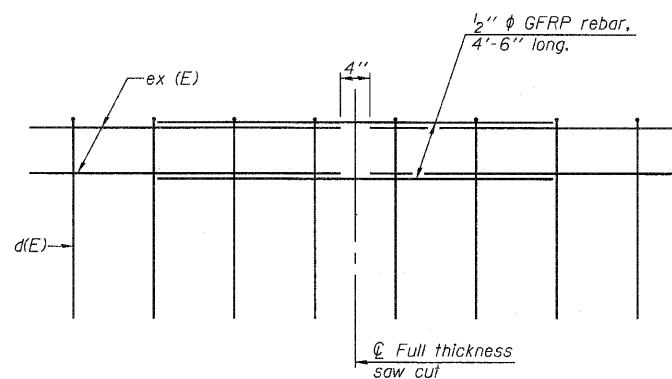
All dimensions shall remain the same as shown on superstructure details, except dimensions A and B which are to be revised as shown to provide additional clearance. Additional concrete needed to revise dimension A and B = 0.0165 cu. yds./ft. of parapet.

Place aluminum sheet in curb portion at and near piers. Full thickness saw cut at all joint locations in lieu of cork joint filler.

Steel superstructure shown. Other superstructure types similar.



#3 (E) BAR



GFRP REBAR STIFFENING DETAIL

(Place as shown in parapet section
at each parapet joint location.)

CB Coombe-Bloxdorf P.C.
-CIVIL ENGINEERS-
-STRUCTURAL ENGINEERS-
-LAND SURVEYORS-
Design Firm License No. 184-002703

PROJECT NO.	09033	F.A.I. RTE.	SECTION	COUNTY	TOTAL SHEETS	SHEET NO.
SCALE		280	81-1 (HB-1)	ROCK ISLAND	503	279
DATE	5/18/10					
DESIGN BY	GB/MCB	CONTRACT NO. 64815				
DRAWN BY	MML					
CHECKED BY	MCB	FED. ROAD DIST. NO. 7	ILLINOIS	FED. AID PROJECT		

```

PLOT DATE = 7/21/2010
FILE NAME = ...8081-0190_0191-64815-038-Conc-parapet-det.dgn
PLOT SCALE = 01.02397 '1" / IN.
USER NAME = CFC..

```