

**WALL ELEVATION TABLE**

Elevation	W. Abuts.	E. Abuts.
A	577.0	574.0
B	572.8	571.5
C	568.7	567.5
D	563.8	563.5
E	576.6	573.5
F	559.1	557.7
G	565.6	564.7
H	561.0	561.2
I	571.0	569.5
J	566.5	565.0

**SEGMENTAL CONCRETE BLOCK WALL  
SEQUENCE OF CONSTRUCTION**

Excavate as required for construction of Segmental Concrete Block Wall. This will require removal of existing landscape walls as shown.

Construct Segmental Concrete Block Walls.

Backfill to base of existing landscape walls.

Replace existing landscape walls as shown.

Backfill to top of embankment as directed by the Engineer.

**NOTES:**

See sheet 2 of 41 for Concrete Slope Wall Details.

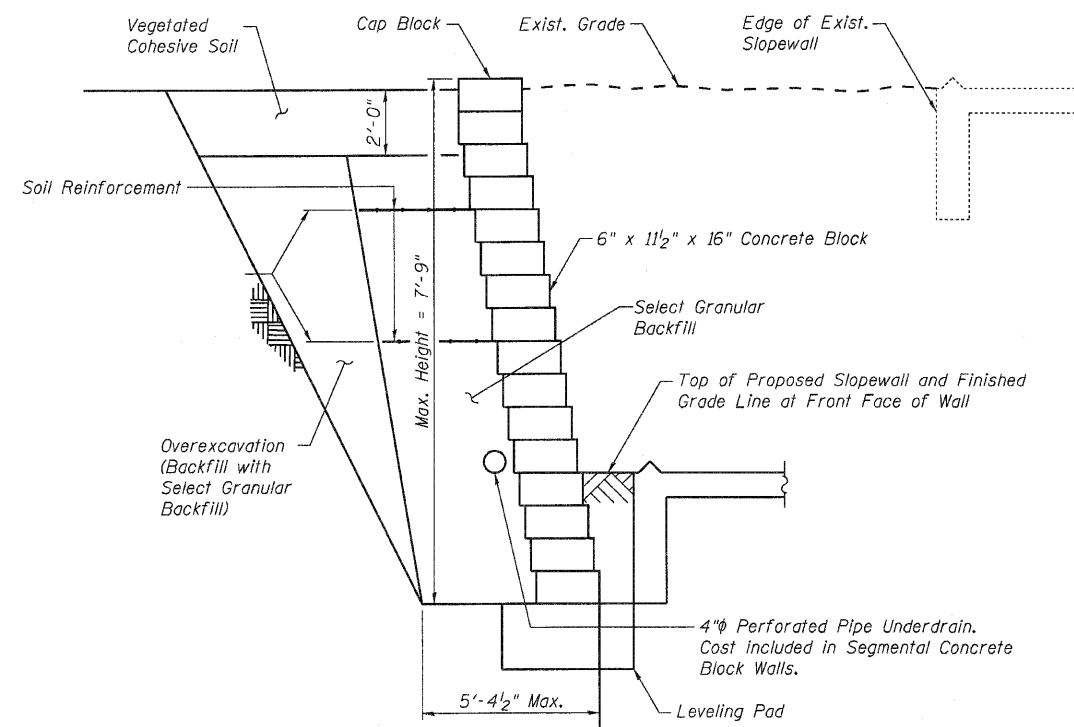
Plans for the construction of the Segmental Concrete Block Walls are to be prepared and submitted by others.

Hatched areas indicate permanent removal of existing landscape walls. Cross-hatched areas indicate removal and replacement of existing landscape walls. Cost of landscape wall removal and replacement is included in Segmental Concrete Block Wall.

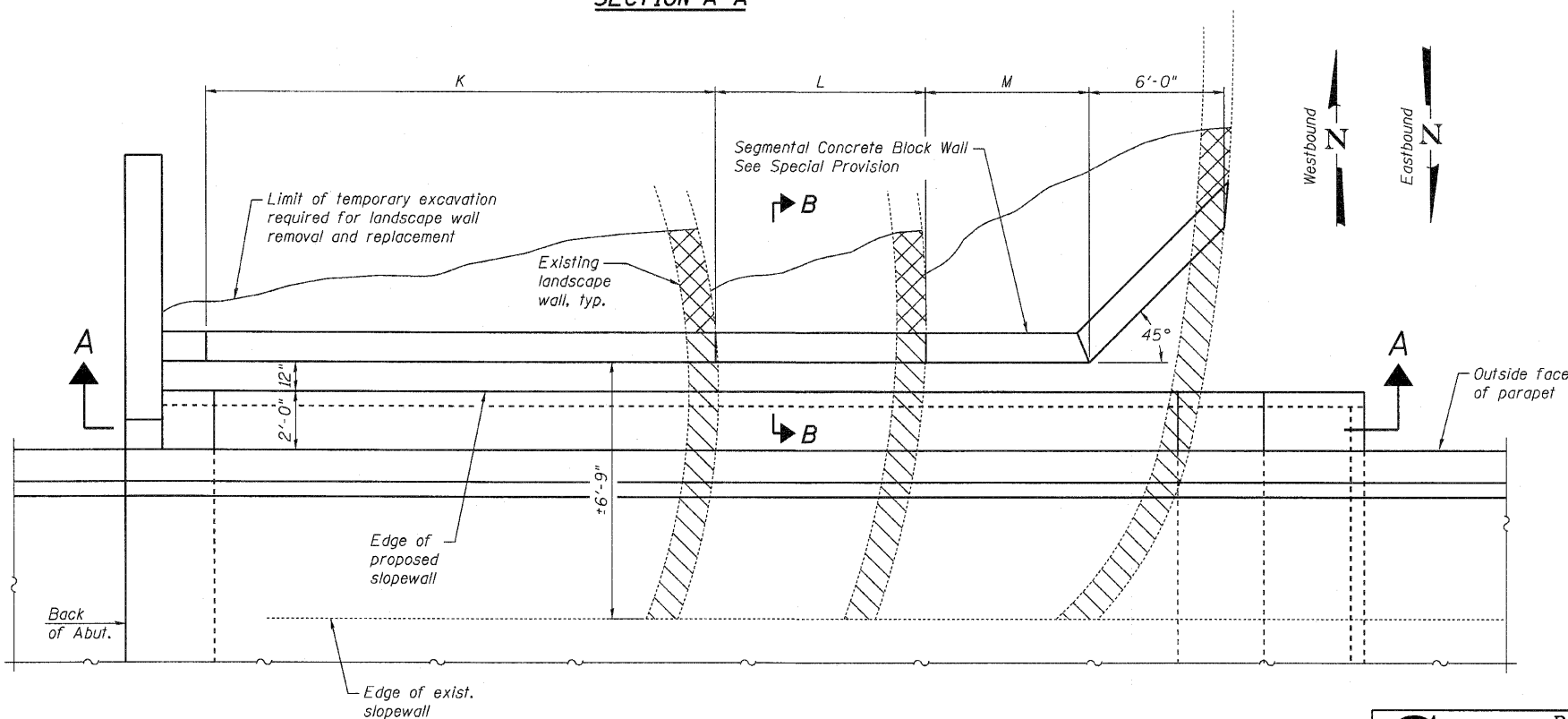
Excavation and backfill required for Segmental Concrete Block Wall construction is included in Segmental Concrete Block Wall.

The block used for construction of the Segmental Concrete Block Walls shall match the existing block used for the existing landscape walls in size, 6" x 11 1/2" x 16", and color as directed by the Engineer.

Plan dimensions and details relative to existing plans are subject to nominal construction variations. The Contractor shall field verify existing dimensions and details affecting new construction and make necessary approved adjustments prior to construction or ordering of materials. Such variations shall not be cause for additional compensation for a change in scope of the work, however, the Contractor will be paid for the quantity actually furnished at the unit price bid for the work.



**SECTION B-B**



**PARTIAL PLAN**

Showing Segmental Concrete Block Wall  
(NW & SE shown, SW & NE similar)

**WALL DIMENSION TABLE**

DIM	SW	SE	NW	NE
K	18'-5 1/8"	13'-7 3/8"	18'-10"	15'-8 5/8"
L	8'-9 1/4"	9'-6 5/8"	8'-11"	7'-10 1/4"
M	3'-6"	1'-9 3/8"	3'-2"	1'-6 3/8"

**BILL OF MATERIAL  
TWO STRUCTURES**

Item	Unit	Total
Segmental Concrete Block Wall	Sq. Ft.	858

For Information Only

**SEGMENTAL CONCRETE  
BLOCK WALL DETAILS  
STRUCTURE NO. 081-0190 (WB)  
STRUCTURE NO. 081-0191 (EB)**

**CB** Coombe-Bloxdorf P.C.  
-CIVIL ENGINEERS-  
-STRUCTURAL ENGINEERS-  
-LAND SURVEYORS-  
Design Firm License No. 184-002703

PROJECT NO. 09033  
SCALE  
DATE 5/18/10  
DESIGN BY  
DRAWN BY MML  
CHECKED BY MCB

SHEET NO. 4  
41 SHEETS

F.A.I. RTE.	SECTION	COUNTY	TOTAL SHEETS	SHEET NO.
280	81-1 (HB-1)	ROCK ISLAND	503	245
CONTRACT NO. 64815				
FED. ROAD DIST. NO. 7 ILLINOIS FED. AID PROJECT				