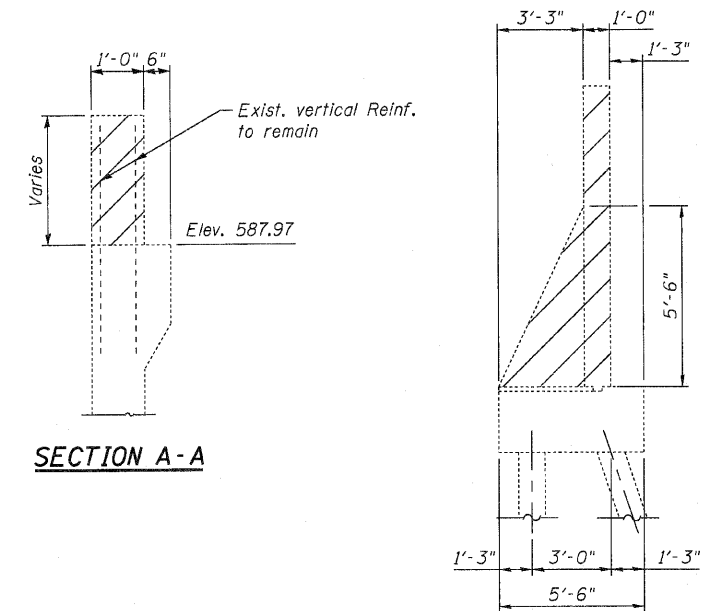
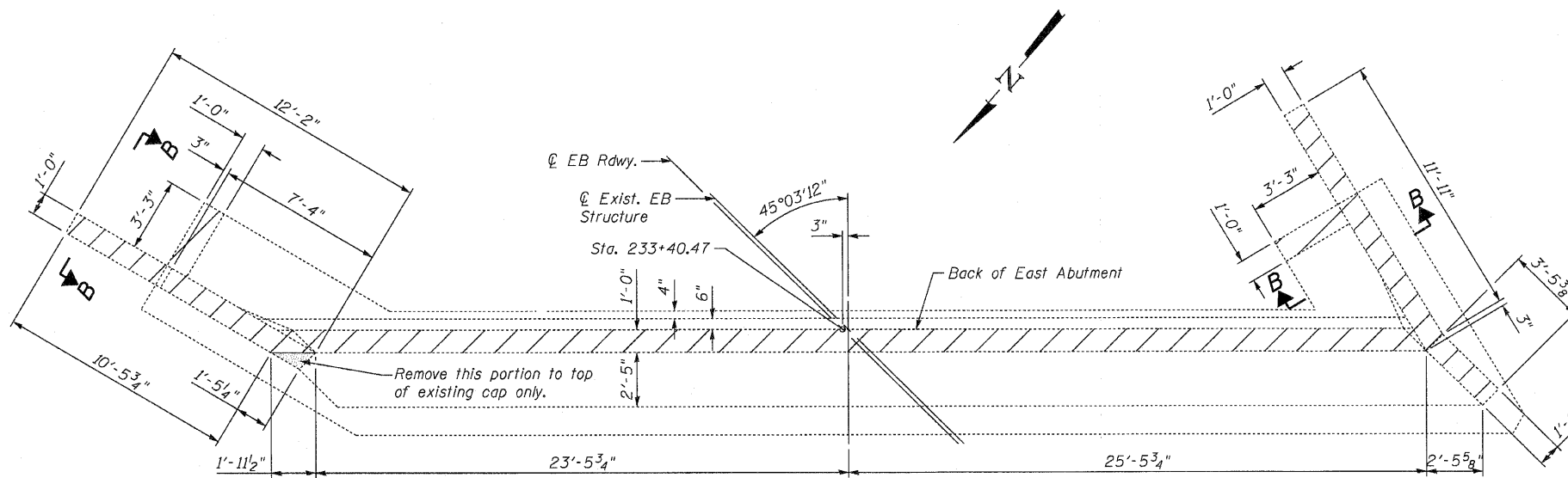


ELEVATION

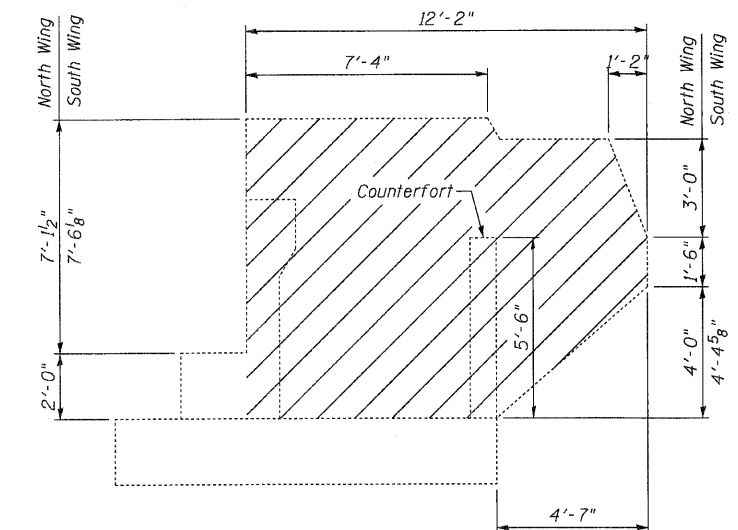


SECTION A-A

SECTION B-B



PLAN



WING ELEVATION

LEGEND

- Structural Repair of Concrete (Depth Equal to or Less Than 5")
- Concrete Removal
- Denotes Epoxy Crack Injection

BILL OF MATERIAL

ITEM	UNIT	TOTAL
Concrete Removal	Cu. Yd.	11.1
Structural Repair of Concrete (Depth Equal to or Less Than 5")	Sq. Ft.	5
Epoxy Crack Injection	Foot	3.0

Notes

Existing reinforcement not extending into the areas of new construction shall be cut at the removal line and removed. Exposed portion will be cleaned and coated with a layer of epoxy. Cost included with Concrete Removal.

Existing reinforcement extending into the areas of new construction are to be cleaned, straightened and incorporated into the new construction. All reinforcement bars to be reused that are damaged during concrete removal shall be replaced with an approved bar splicer or anchorage system. Cost included with Concrete Removal.

**CONCRETE REMOVAL DETAILS
EAST ABUTMENT EB STRUCTURE
STRUCTURE NO. 081-0018 (EB)**

CB Coombe-Bloxdorf P.C.
-CIVIL ENGINEERS-
-STRUCTURAL ENGINEERS-
-LAND SURVEYORS-
Design Firm License No. 184-002703

PROJECT NO. 09033
SCALE
DATE 6/4/2010
DESIGN BY BD/MCB
DRAWN BY CFC
CHECKED BY MCB

SHEET NO. 30
55 SHEETS

F.A.I. RTE.	SECTION	COUNTY	TOTAL SHEETS	SHEET NO.
280	81-1 (VB) R	ROCK ISLAND	503	216
CONTRACT NO. 64815				
FED. ROAD DIST. NO.	ILLINOIS	FED. AID PROJECT		