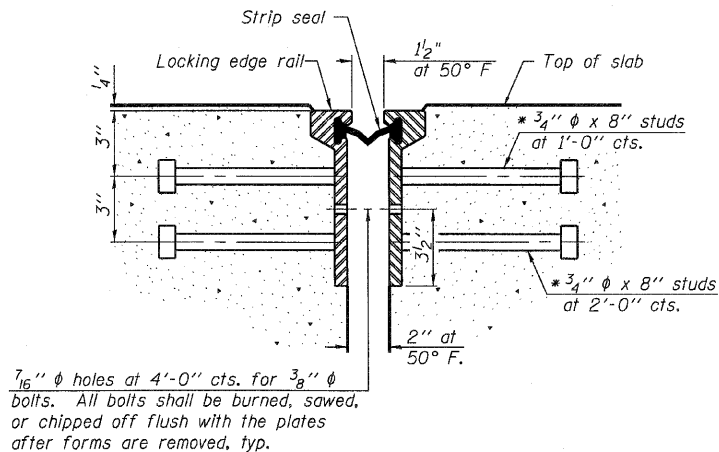
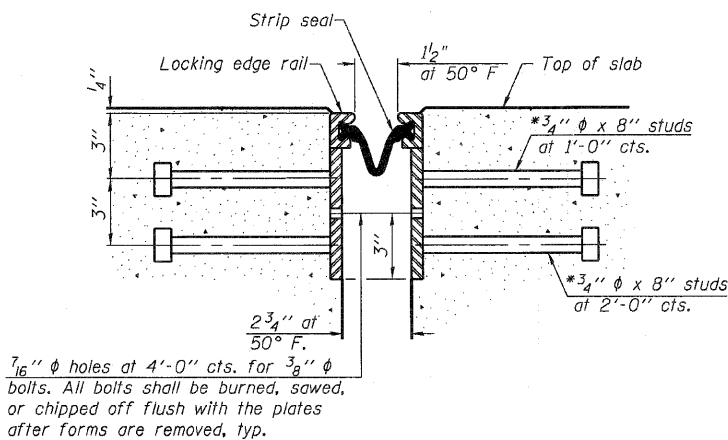


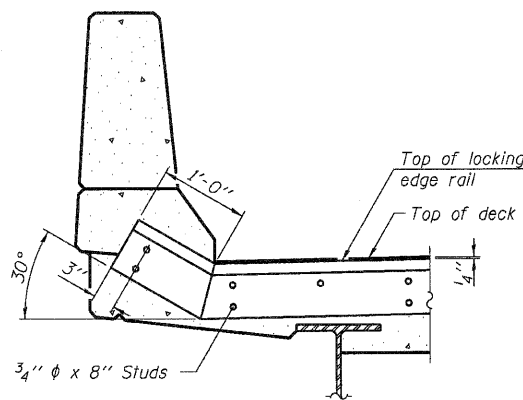
\* Granular or solid flux filled headed studs conforming to Article 1006.32 of the Std. Specs., automatically end welded.



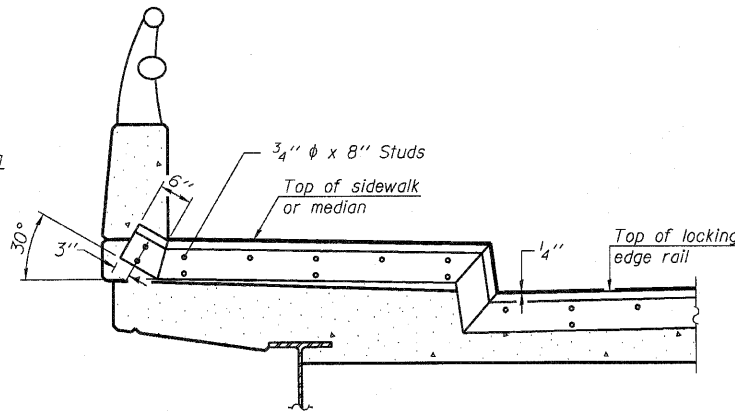
SECTION THRU  
ROLLED RAIL JOINT



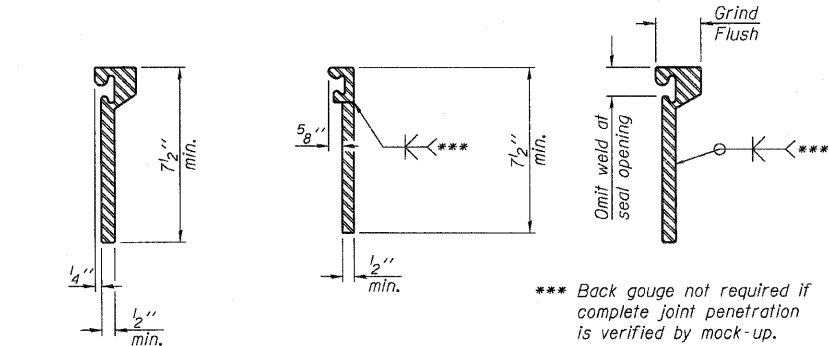
SECTION THRU  
WELDED RAIL JOINT



AT PARAPET  
See Section A-A for end  
treatment of skews > 30°.



AT SIDEWALK OR MEDIAN  
Shorter plates with a single row of studs at 12" cts. may be necessary on medians which are shallower than 9". See manufacturer's recommendation.



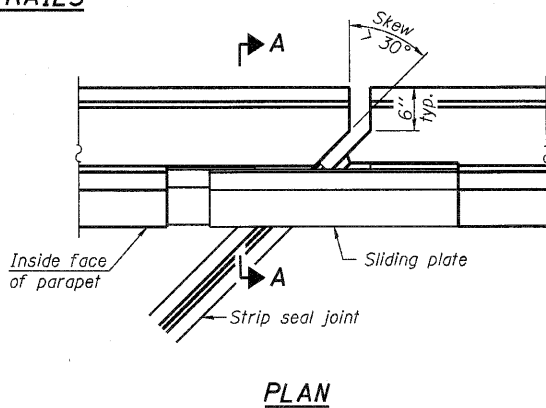
ROLLED  
EXTRUDED RAIL

WELDED RAIL

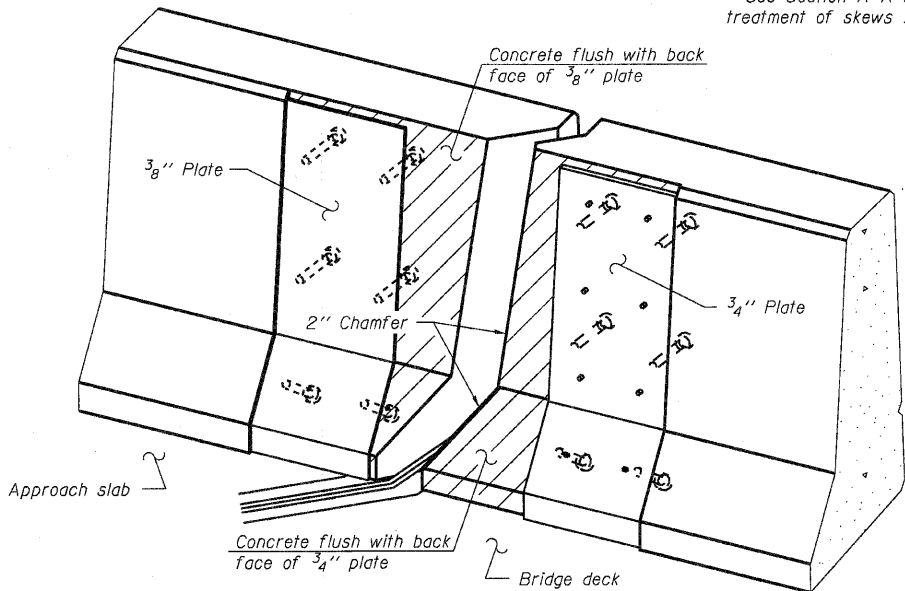


LOCKING EDGE  
RAIL SPLICE

LOCKING EDGE RAILS

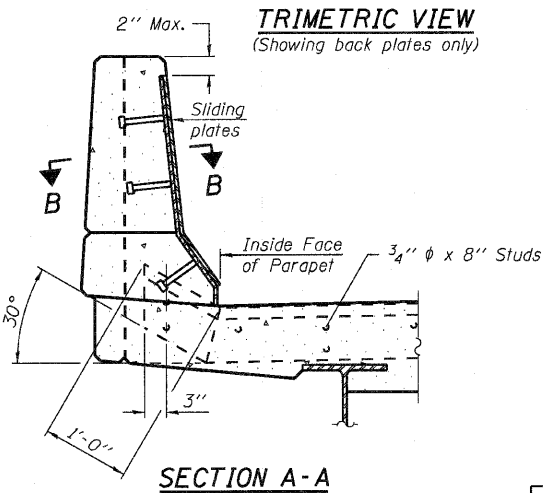


PLAN



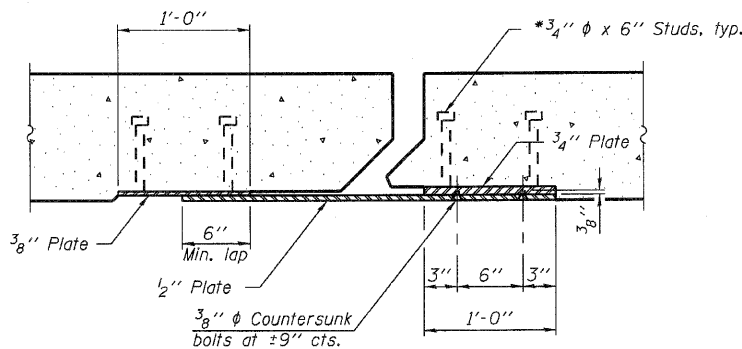
TYPICAL END TREATMENTS

Notes:  
The strip seal shall be made continuous and shall have a minimum thickness of 1/4". The configuration of the strip seal shall match the configuration of the Locking Edge Rails. Open or "webbed" strip seal gland configurations are not permitted. The gland shall be sized for a maximum rated movement of 4 inches.  
The Locking Edge Rails depicted are conceptual only, except for the minimum dimensions shown. The actual configuration of the Locking Edge Rails and matching strip seal may vary from manufacturer to manufacturer. Flanged edge rails will not be allowed. Locking Edge Rails may be spliced at slope discontinuities.  
The manufacturer's recommended installation methods shall be followed.  
The joint opening and deck dimensions detailed on the superstructure are based on a rolled rail expansion joint. If the Contractor elects to use the welded rail expansion joint, the opening and deck dimensions shall be modified according to the dimensions detailed on this sheet. Required modifications shall be made at no additional cost to the State.  
All steel components shall be galvanized after fabrication according to Article 520.03 of the Standard Specifications.  
Maximum space between rail segments at stage lines shall be 3/16", sealed with a suitable sealant.



SECTION A-A

POINT BLOCK DETAILS  
(for skews > 30°)



SECTION B-B

BILL OF MATERIAL

Item	Unit	Total
Preformed Joint Strip Seal	Foot	243

PREFORMED JOINT STRIP SEAL  
STRUCTURE NO. 081-0018 (EB)  
STRUCTURE NO. 081-0019 (WB)

**CB** Coombe-Bloxdorf P.C.  
-CIVIL ENGINEERS-  
-STRUCTURAL ENGINEERS-  
-LAND SURVEYORS-  
Design Firm License No. 184-002703

PROJECT NO. 090333  
SCALE  
DATE 6/4/2010  
DESIGN BY BD/MCB  
DRAWN BY MML  
CHECKED BY MCB

SHEET NO. 22  
55 SHEETS

F.A.I. RTE.	SECTION	COUNTY	TOTAL SHEETS	SHEET NO.
280	81-1 (VB) R	ROCK ISLAND	503	208
CONTRACT NO. 64815				
FED. ROAD DIST. NO. 7 ILLINOIS FED. AID PROJECT				