

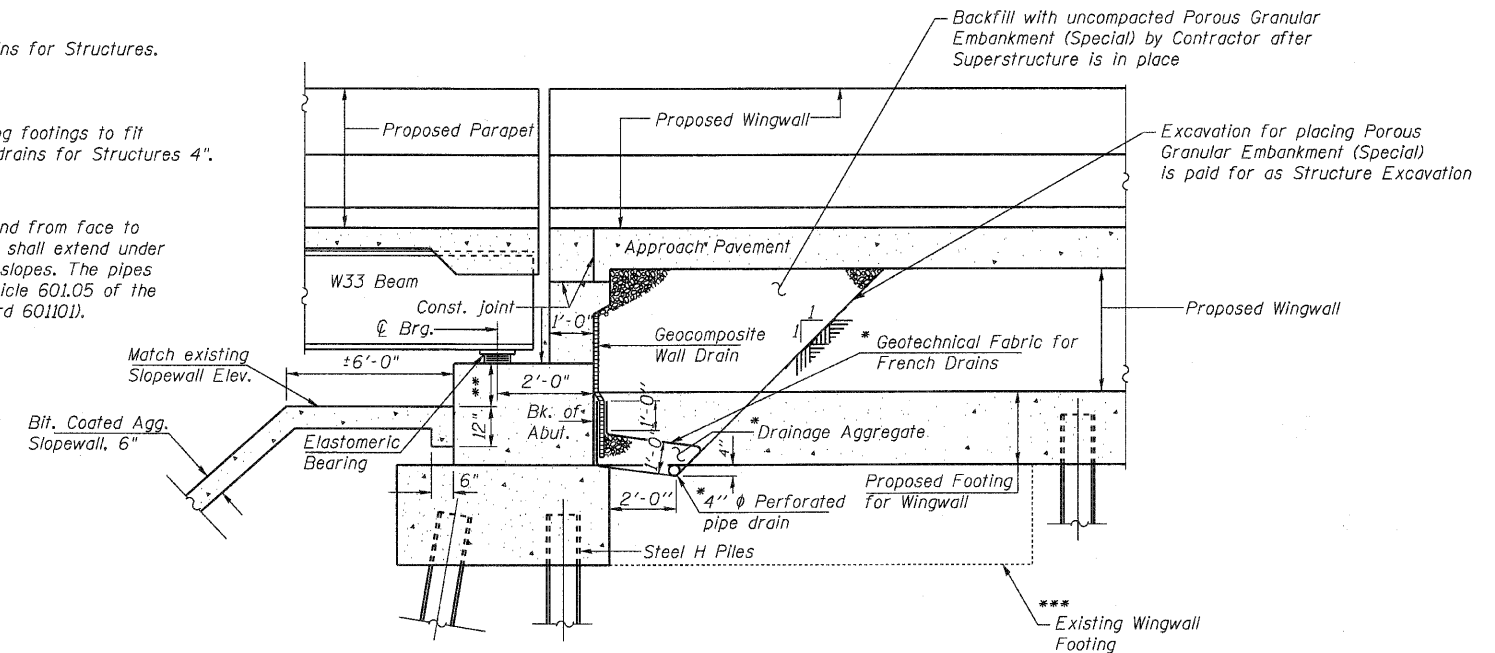
\* Included in the cost of Pipe Underdrains for Structures.

\*\* 6<sup>5</sup>/<sub>8</sub>" minimum at existing cap.

\*\*\* Remove 5" x 5" area of top of existing footings to fit pipe drain. Cost included in Pipe Underdrains for Structures 4".

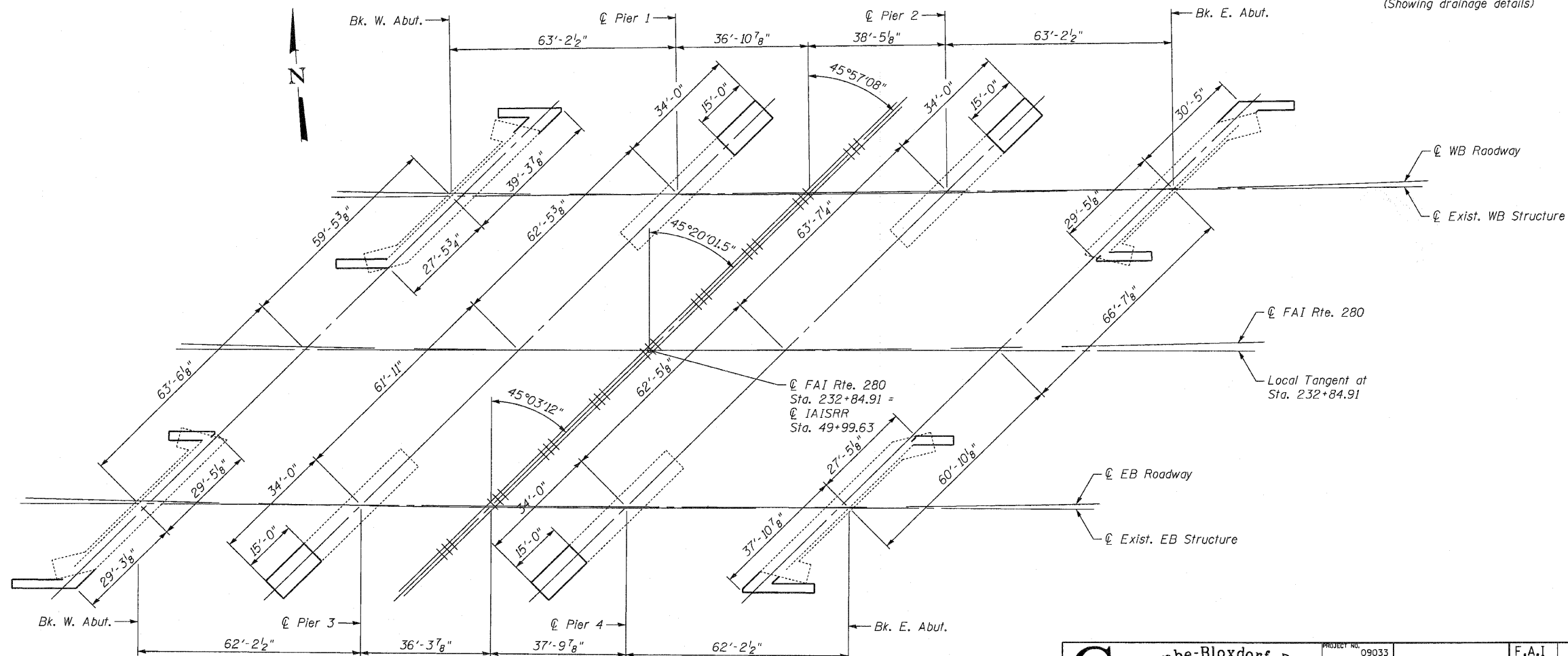
Note:

All drainage system components shall extend from face to face of each wingwall except an outlet pipe shall extend under the wingwall until intersecting with the side slopes. The pipes shall drain into concrete headwalls. (See Article 601.05 of the Standard Specifications and Highway Standard 601101).



### SECTION THRU ABUTMENT EXTENSION

(Horiz. dim. @ Rt. L's)  
(Showing drainage details)



PLAN

**FOOTING LAYOUT**  
**STRUCTURE NO. 081-0018 (EB)**  
**STRUCTURE NO. 081-0019 (WB)**

**CB Coombe-Bloxdorf P.C.**  
- CIVIL ENGINEERS -  
- STRUCTURAL ENGINEERS -  
- LAND SURVEYORS -  
Design Firm License No. 184-002703

PROJECT NO. 09033  
SCALE  
DATE 6/4/2010  
DESIGN BY  
DRAWN BY MCB  
CHECKED BY CFC

SHEET NO. 3  
55 SHEETS

F.A.I. RTE.	SECTION	COUNTY	TOTAL SHEETS	SHEET NO.
280	81-1 (VB) R	ROCK ISLAND	503	189
CONTRACT NO. 64815				
FED. ROAD DIST. NO. ILLINOIS FED. AID PROJECT				