

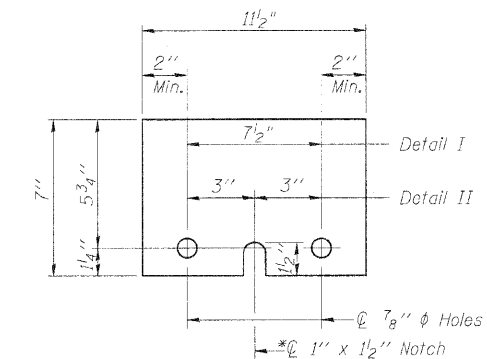
NOTES

Detail I - With Bar Splicer or Couplers:
Connect one (1) 1"x7"x11 1/2" steel \bar{L} to the top layer of couplers with 2-5/8" ϕ bolts screwed to coupler at approximate \bar{C} of each barrier panel.

Detail II - With Extended Reinforcement Bars:
Connect one (1) 1"x7"x11 1/2" steel \bar{L} to the concrete slab or concrete wearing surface with 2-5/8" ϕ Expansion Anchors or cast in place inserts spaced between the top layer of reinforcement at approximate \bar{C} of each barrier panel.

Cost of anchorage is included with Temporary Concrete Barrier.
The 1" x 7" x 11 1/2" plate shall not be removed until stage III construction forms and all reinforcement bars are in place and the concrete is ready to be placed.

*** Dimension shown is minimum required embedment into concrete.
If hot-mix asphalt wearing surface is present, minimum embedment
shall be in addition to wearing surface depth.




STEEL RETAINER @ 1" x 7" x 11½"

* Required only with Detail II

*** Wood blocks may be omitted when required to provide minimum stage traffic lane width. When the wood blocks are omitted, the concrete barrier shall be in direct contact with the steel retainer plate.*

TEMPORARY CONCRETE BARRIER FOR STAGE CONSTRUCTION
STRUCTURE NUMBERS 081-0188 (S.B.) & 081-0189 (N.B.)

 <p>HANSON Hanson Professional Services Inc.</p>		© Copyright Hanson Professional Services Inc. 2010	JOB NO. 05R1532A	SHEET NO. 5	F.A.I. RTE. 280	SECTION 81-1(HB)R	COUNTY Rock Island	TOTAL SHEETS 503	SHEET NO. 138
DATE 07/23/10		50 SHEETS		CONTRACT NO. 64815					
				ILLINOIS		FED. AID PROJECT			