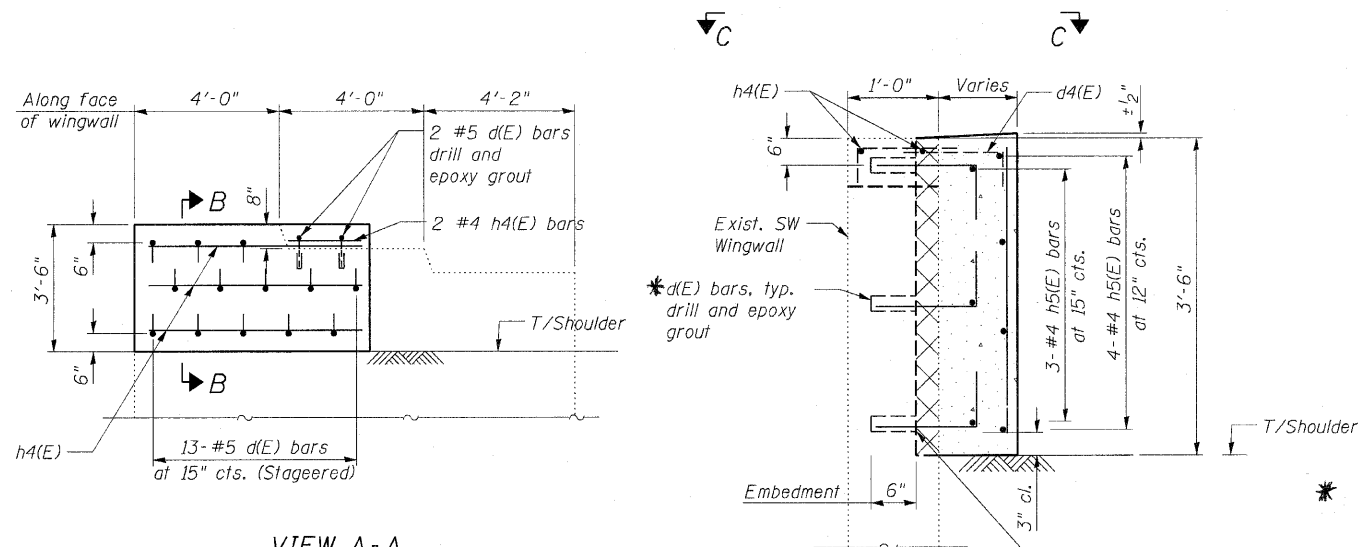
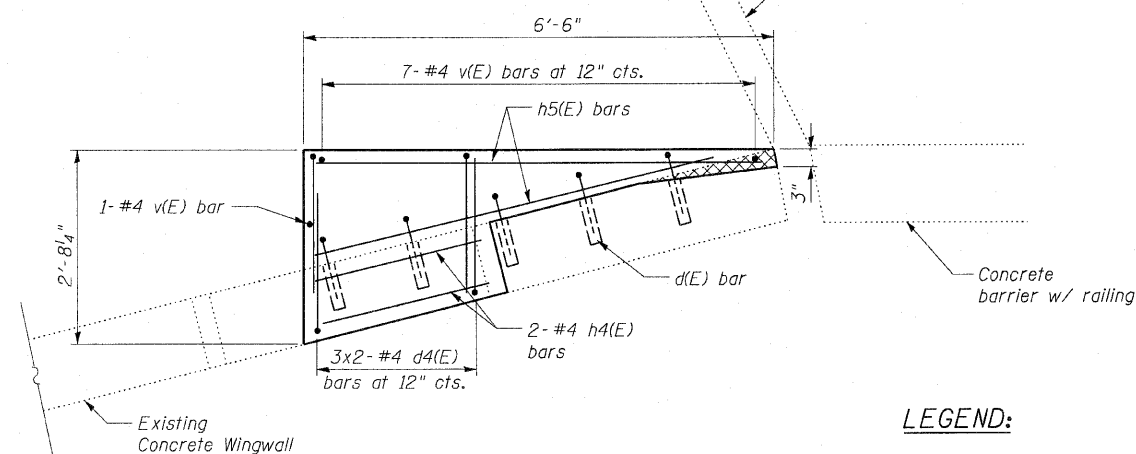


SOUTH WEST WINGWALL PLAN
S.N. 081-0025



SECTION B-B



VIEW C-C
Verify dimensions in the field

LEGEND:

Concrete Removal, Cost included with Concrete Structures

NOTES:

- Plan dimensions and details relative to existing plans are subject to nominal construction variations. The Contractor shall field verify existing dimensions and details affecting new construction and make necessary approved adjustments prior to construction or ordering of materials. Such variations shall not be cause for additional compensation for a change in scope of the work, however, the Contractor will be paid for the quantity actually furnished at the unit price bid for the work.
- See Standard 631033-09 for other details and notes.
- The cost of drilling and epoxy grouting of bars is included with **Reinforcement Bars, Epoxy Coated**.
- Protective Coat shall be applied to all new concrete areas.
- Reinforcement bars shall conform to the requirements of ASTM A 706 Gr 60. See Special Provisions.
- Reinforcement bars designated (E) shall be epoxy coated.
- Existing reinforcement shall be cleaned and incorporated into the new construction. Cost included with Concrete Structures.

BILL OF MATERIAL

Bar	Number	Size	Length	Shape
d(E)	15	#5	1'-6"	
d4(E)	6	#4	2'-3"	
h4(E)	2	#4	2'-5"	
h5(E)	7	#4	6'-2"	
v(E)	8	#4	3'-2"	
REINFORCEMENT BARS, EPOXY COATED			POUND	90
CONCRETE STRUCTURES			CU YD	1.2
PROTECTIVE COAT			SQ YD	4

