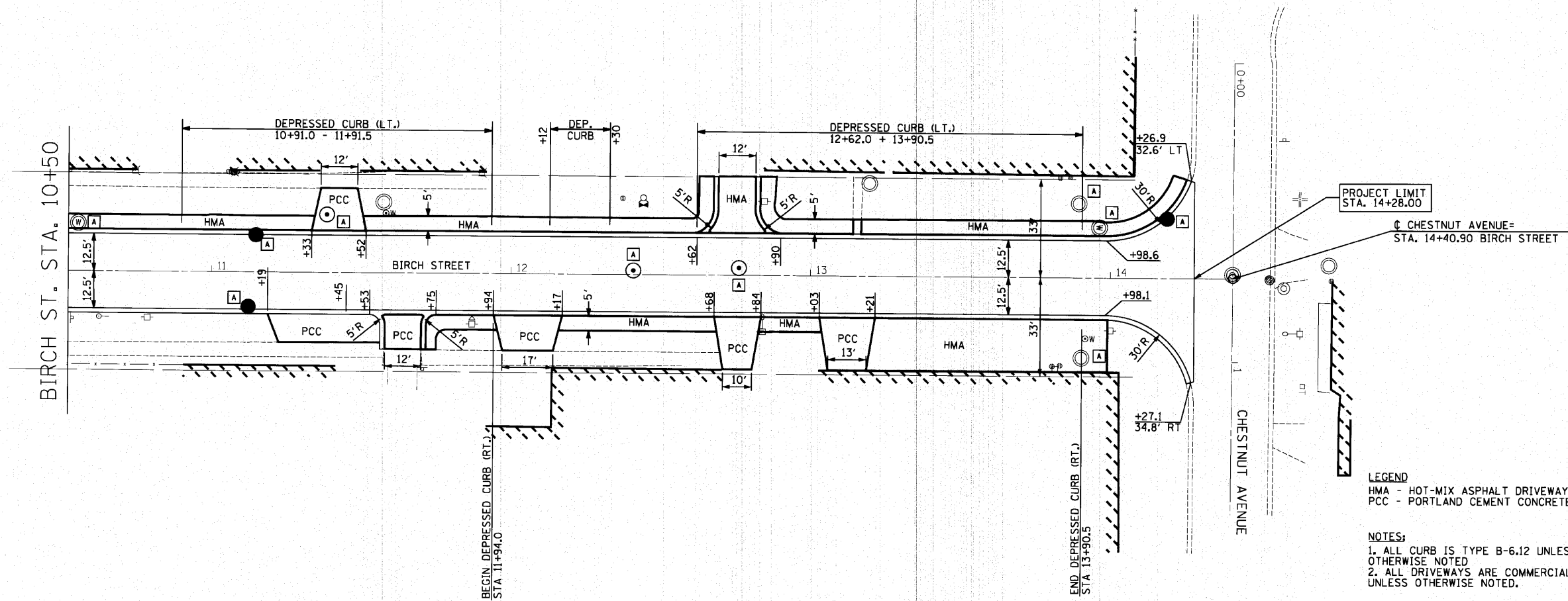


|      |          |      |
|------|----------|------|
| PLAN | SURVEYED | DATE |
|      | NOTED    |      |
|      | BY       |      |
|      | NO.      |      |
|      | NO.      |      |
|      | NO.      |      |
|      | NO.      |      |

|         |          |      |
|---------|----------|------|
| PROFILE | SURVEYED | DATE |
|         | NOTED    |      |
|         | BY       |      |
|         | NO.      |      |
|         | NO.      |      |
|         | NO.      |      |
|         | NO.      |      |

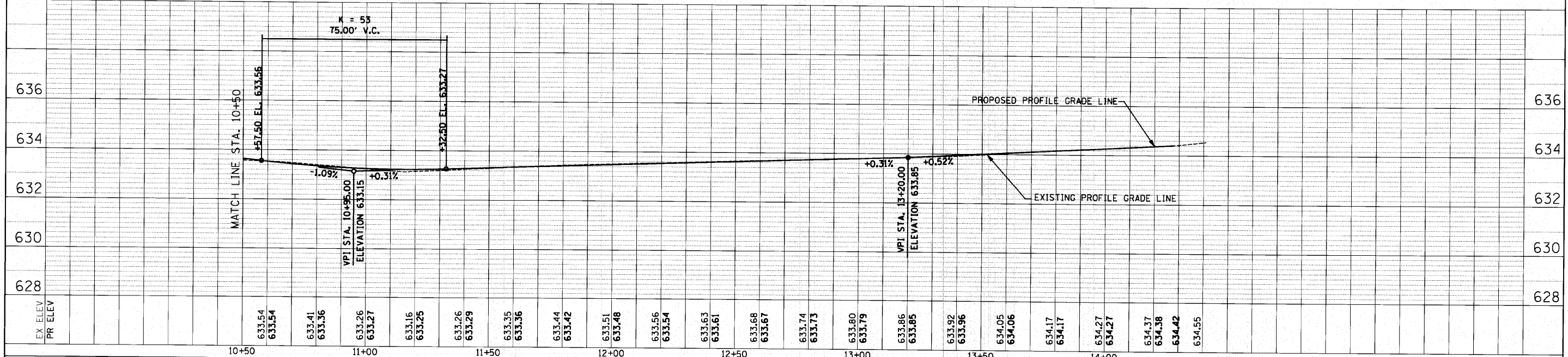


PROJECT LIMIT  
STA. 14+28.00

CHESTNUT AVENUE=  
STA. 14+40.90 BIRCH STREET

**LEGEND**  
HMA - HOT-MIX ASPHALT DRIVEWAY  
PCC - PORTLAND CEMENT CONCRETE DRIVEWAY

**NOTES:**  
1. ALL CURB IS TYPE B-6.12 UNLESS OTHERWISE NOTED  
2. ALL DRIVEWAYS ARE COMMERCIAL (C.E.) UNLESS OTHERWISE NOTED.



|   |                    |            |           |   |                           |           |          |                |             |
|---|--------------------|------------|-----------|---|---------------------------|-----------|----------|----------------|-------------|
| FILE NAME = p:\78148498 - birch & cherry reconstruction\plans\sheets\F8148498.dgn | USER NAME = suser8 | DESIGNED - | REVISED - | <p align="center"><b>STATE OF ILLINOIS</b><br/><b>DEPARTMENT OF TRANSPORTATION</b></p> <p align="center"><b>BIRCH ST. &amp; CHERRY AVE.</b><br/><b>PLAN AND PROFILE - BIRCH ST.</b></p> | F.A. RTE. =               | SECTION = | COUNTY = | TOTAL SHEETS = | SHEET NO. = |
| PLOT SCALE = 20.0000' / IN.   | CHECKED -          | DRAWN -    | REVISED - |   | 10-00076-00-FP            | COOK      | 44       | 17             |             |
| PLOT DATE = 10/25/2010  | DATE -             | REVISOR -  | REVISED - |   | CONTRACT NO. 63258        |           |          |                |             |
|   |                    |            |           |   | ILLINOIS FED. AID PROJECT |           |          |                |             |

SCALE: 1" = 20' SHEET NO. 1 OF 1 SHEETS STA. 10+50 TO STA. 14+28