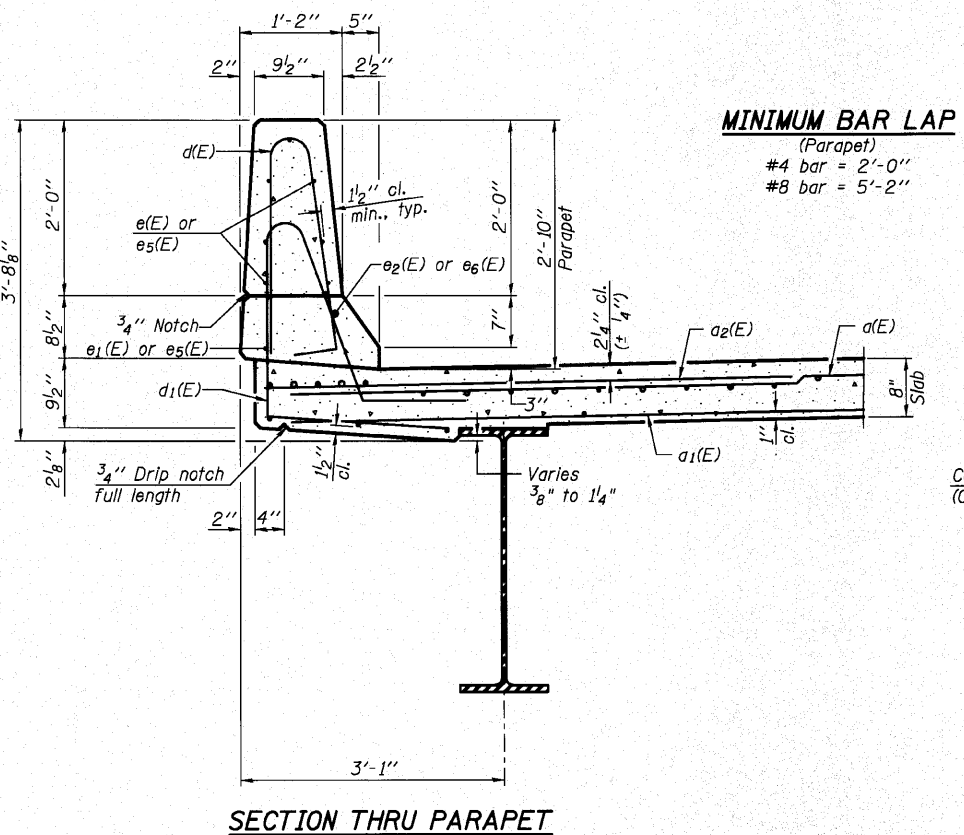
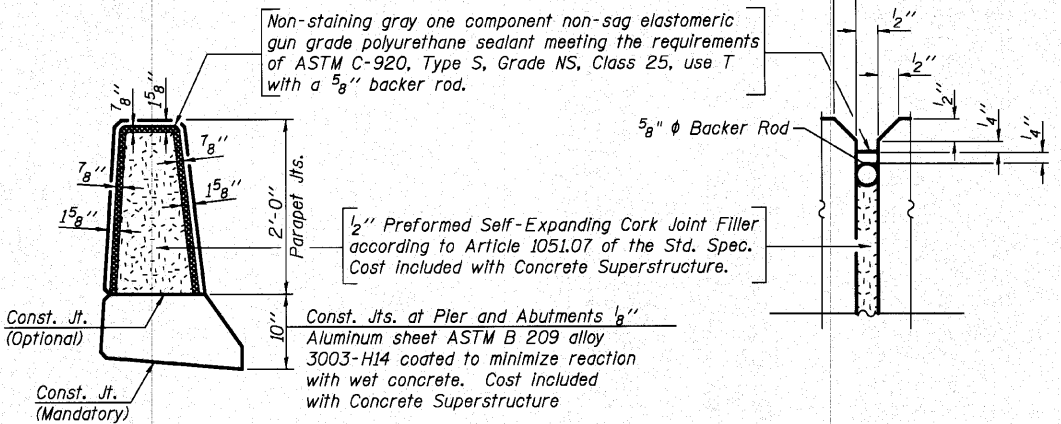


INSIDE ELEVATION OF PARAPET

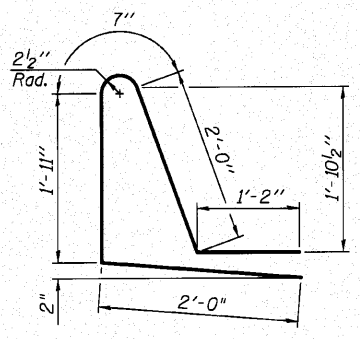


SECTION THRU PARAPET

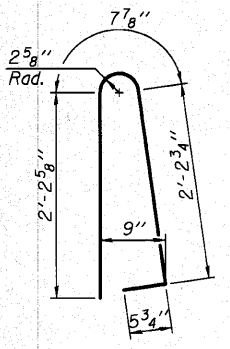
MINIMUM BAR LAP
(Parapet)
#4 bar = 2'-0"
#8 bar = 5'-2"



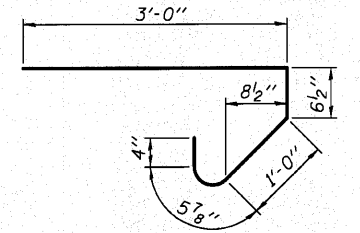
PARAPET JOINT DETAILS



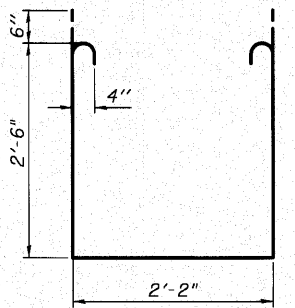
BAR d1(E)



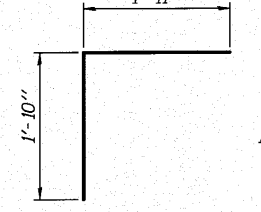
BAR d(E)



BAR s(E)



BAR s1(E)



BAR v(E)

SUPERSTRUCTURE BILL OF MATERIAL

Bar	No.	Size	Length	Shape
d(E)	211	#5	32'-6"	U
d1(E)	127	#5	31'-10"	U
a2(E)	420	#6	6'-6"	—
b(E)	180	#5	23'-0"	—
b1(E)	33	#6	31'-0"	—
b2(E)	120	#5	28'-2"	—
d(E)	232	#5	5'-7"	L
d1(E)	232	#5	7'-8"	L
e(E)	84	#4	14'-6"	—
e1(E)	8	#4	23'-1"	—
e2(E)	8	#8	24'-8"	—
e5(E)	32	#4	7'-8"	—
e6(E)	4	#8	7'-8"	—
m(E)	20	#6	18'-1"	—
m1(E)	12	#6	10'-1"	—
m2(E)	8	#6	6'-5"	—
m3(E)	4	#6	2'-9"	—
m4(E)	8	#6	7'-10"	—
s(E)	68	#5	5'-5"	U
s1(E)	60	#4	8'-2"	U
v(E)	72	#5	3'-9"	T
Reinforcement Bars, Epoxy Coated		Pound	31,670	
Concrete Superstructure		Cu. Yds.	134.1	

Bars indicated thus 1 x 2 - #4 etc. indicates 1 line of bars with 2 lengths per line.

SUPERSTRUCTURE DETAILS STRUCTURE NO. 045-3020

DESIGNED - AEU
CHECKED - DLS
DRAWN - AWH
CHECKED - DLS

WILLS BURKE KELSEY ASSOCIATES LTD.
116 West Main Street, Suite 201
St. Charles, Illinois 60174
(630) 443-7755

SHEET NO. 8 21 SHEETS	F.A.U.	SECTION	COUNTY	TOTAL SHEETS	SHEET NO.
	2332	03-14185-02-BR	KANE	73	32
CONTRACT NO. 63521			FED. ROAD DIST. NO. ILLINOIS FED. AID PROJECT		

FILE NAME = P:\CIBEL\WEST P\proj\0453020\0453020.dgn 10/19/2010 10:52:28 AM 10/19/2010 10:52:28 AM 10/19/2010 10:52:28 AM