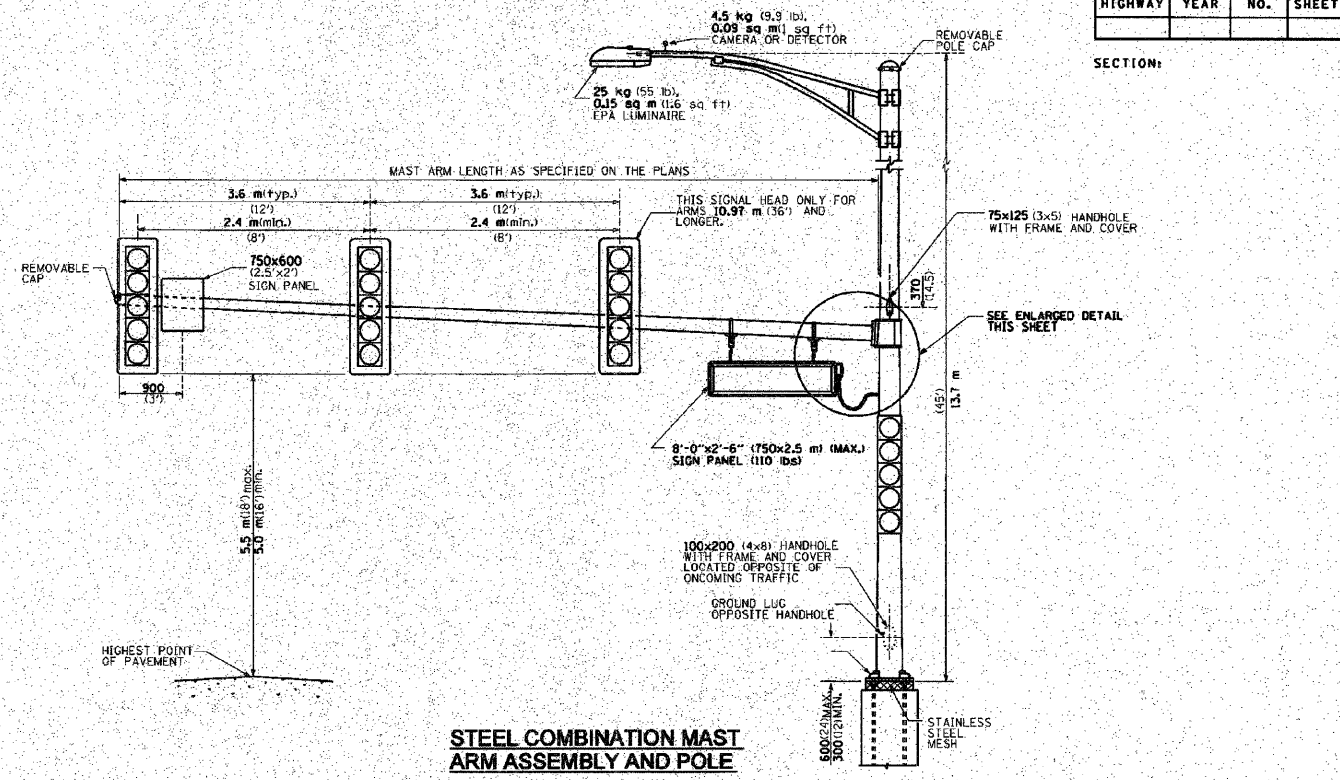
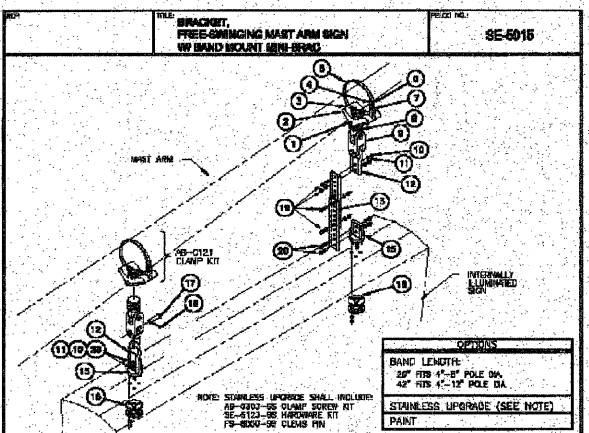


LED SIGN WIRING DETAIL

DESCRIPTION	MANUFACTURER	MODEL	NOTES
1. CIRCUIT BREAKER		15 AMPERE	
2. TERMINAL BLOCK	MARATHON	1502 DJSV	
3. PHOTO ELECTRIC CONTROL	FISHER PIERCE	B124-1.5-07762	
4. CONTRACTOR (INDUSTRIAL CONTROL RELAY)	SQUARE D	8501X020V02	BOLT ON W/SCREW TERMINAL
5. IN-LINE FUSE HOLDER WITH 5 AMP FUSE	BÜSSMANN	S-8000 BK/5-8-3-4-R	
6. ELECTRIC CABLE, No. 14, 3/C (BLACK, WHITE, GREEN)	CAROLPRENE /S00W	02762	
7. CORD/CABLE CONNECTOR	APPLETON	CG5050S (STEEL)	
8. SIGN MOUNTING HARDWARE	PELCO	SE-5015	

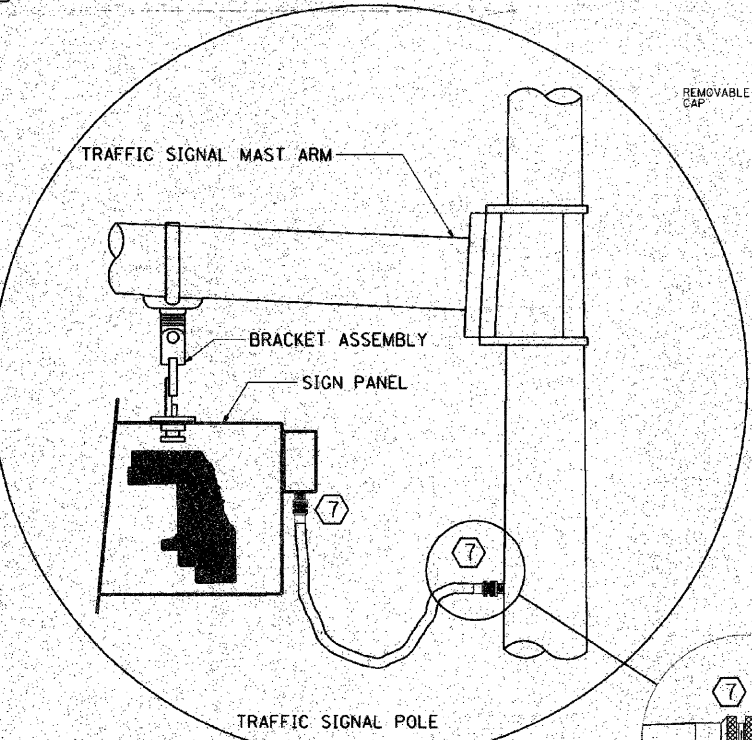


STEEL COMBINATION MAST ARM ASSEMBLY AND POLE



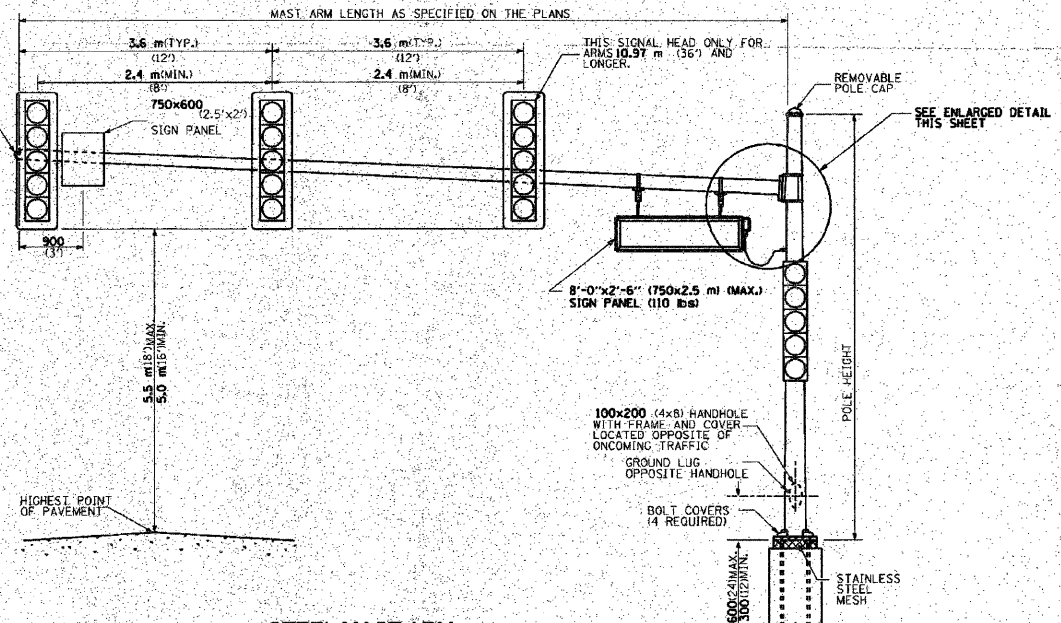
LED SIGN BRACKET DETAIL

ITEM	PART NO.	DESCRIPTION	QTY
1	FS-3205-SS	SCREW, SET SQ HD 1/4" x 5/8", STAINLESS	2
2	AB-0266-M1	CLAMP, MINI-BRAC BAND MOUNT, 1/2" NPS, ALUM	2
3	FS-6201-ZN1	PIN, GROOVE 3/16" x 1/8", ZINC1	2
4	AB-0244-SS	CLAMP, BAND 5/8", STAINLESS	2
5	AB-0243-L	BAND, 5/8", STAINLESS	2
6	FS-3202-SS	SCREW, SET SOC HD 5/16"-18, STAINLESS	2
7	AB-0303-GLV	KIT, CLAMP SCREW FOR MINI-BRAC, GALV	2
8	SE-0371-M1	ADAPTER, SPAN WIRE, DIE CAST ALUM W/ SS INSERT	2
9	SE-0464-M2	CLEVIS-CLEVIS, 1/2" x 1/2", ALUM W/ STAINLESS BUSHINGS	2
10	FS-1001-SS	NUT, HEX HD 5/16", STAINLESS	8
11	FS-4201-SS	WASHER, SPLIT LOCK, 5/16", STAINLESS	8
12	SE-0509-M2	EXTENDER CONNECTOR HANGER, ALUM W/ STAINLESS BUSHING	2
13	SE-0507-11	EXTENDER, 11"	2
14	SE-0512-M1	HANGER, TRI-STUD, ALUM	2
15	SE-5048-SS	HARDWARE KIT W/ BASKET, 5/16"-18, STAINLESS	2
16	FS-6000-GLV	PIN, CLEVIS, 5/8" x 2 1/2", EL. GALV	4
17	FS-0100-SS	PIN, COTTER HUMBOLDT, 5/32" x 1.775" 304 STAINLESS	4
18	FS-2008-SS	BOLT, HEX HD, 5/16"-18 x 1", STAINLESS	4
19	FS-2018-SS	BOLT, HEX HD, 5/16"-18 x 1 1/4", STAINLESS	4



LED SIGN ENLARGED CABLE CONNECTOR DETAIL

LED SIGN ENLARGED CABLE CONNECTOR DETAIL



STEEL MAST ARM ASSEMBLY AND POLE

- GENERAL NOTE:
- SIGNAL HEADS, SIGN PANELS, AND OTHER ATTACHMENT ARE SHOWN FOR MINIMUM DESIGN LOADING PURPOSES ONLY. EACH SIGNAL HEAD SHALL WEIGH 36 Kg (80 lb) AND HAVE A PROJECTED AREA OF 1.37 sq. m (14.7 sq. ft.).
 - PHOTO ELECTRIC CELL IS TO BE MOUNTED ABOVE CABINET DOOR.
 - THE SIGN SHALL BE LOCATED AT A MAXIMUM OF 8' FROM CENTER OF SIGN TO POLE.
 - SIGN IS TO BE MOUNTED A MINIMUM OF 16' ABOVE PAVEMENT.

COUNTY OF COOK
DEPARTMENT OF HIGHWAYS
ILLUMINATED STREET NAME SIGN MOUNTING DETAIL

COMPUTED BY: [Signature] APPROVED BY: [Signature]
DRAWN BY: [Signature] CHECKED BY: [Signature]