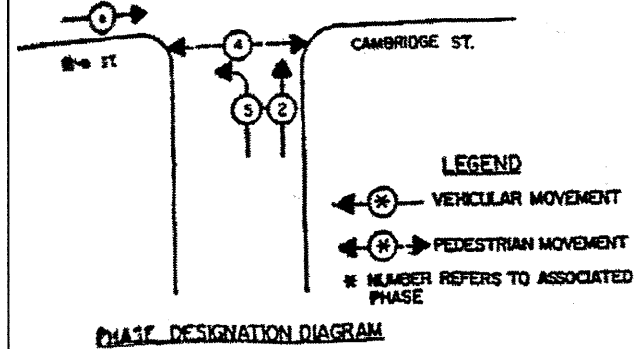
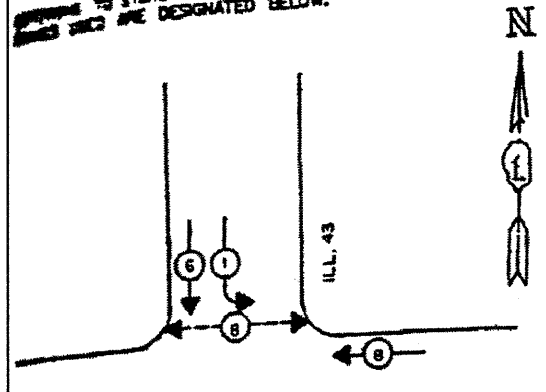


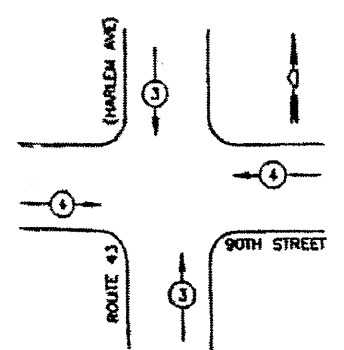
CONTROLLER SEQUENCE IV  
 TO STANDARD 2393-1, THE VEHICULAR AND PEDESTRIAN  
 PHASES ARE DESIGNATED BELOW.



**\* SCHEDULE OF QUANTITIES**

ITEM	UNIT	QUANTITY
ILLUMINATED STREET NAME SIGN	EACH	2
MAINTENANCE OF EXISTING TRAFFIC SIGNAL INSTALLATION	EACH	1
MODIFY EXISTING CONTROLLER CABINET	EACH	1
ELECTRIC CABLE IN CONDUIT, SIGNAL NO. 14 3C	EACH	255

\*\* EMERGENCY VEHICLE PREEMPTION SEQUENCE



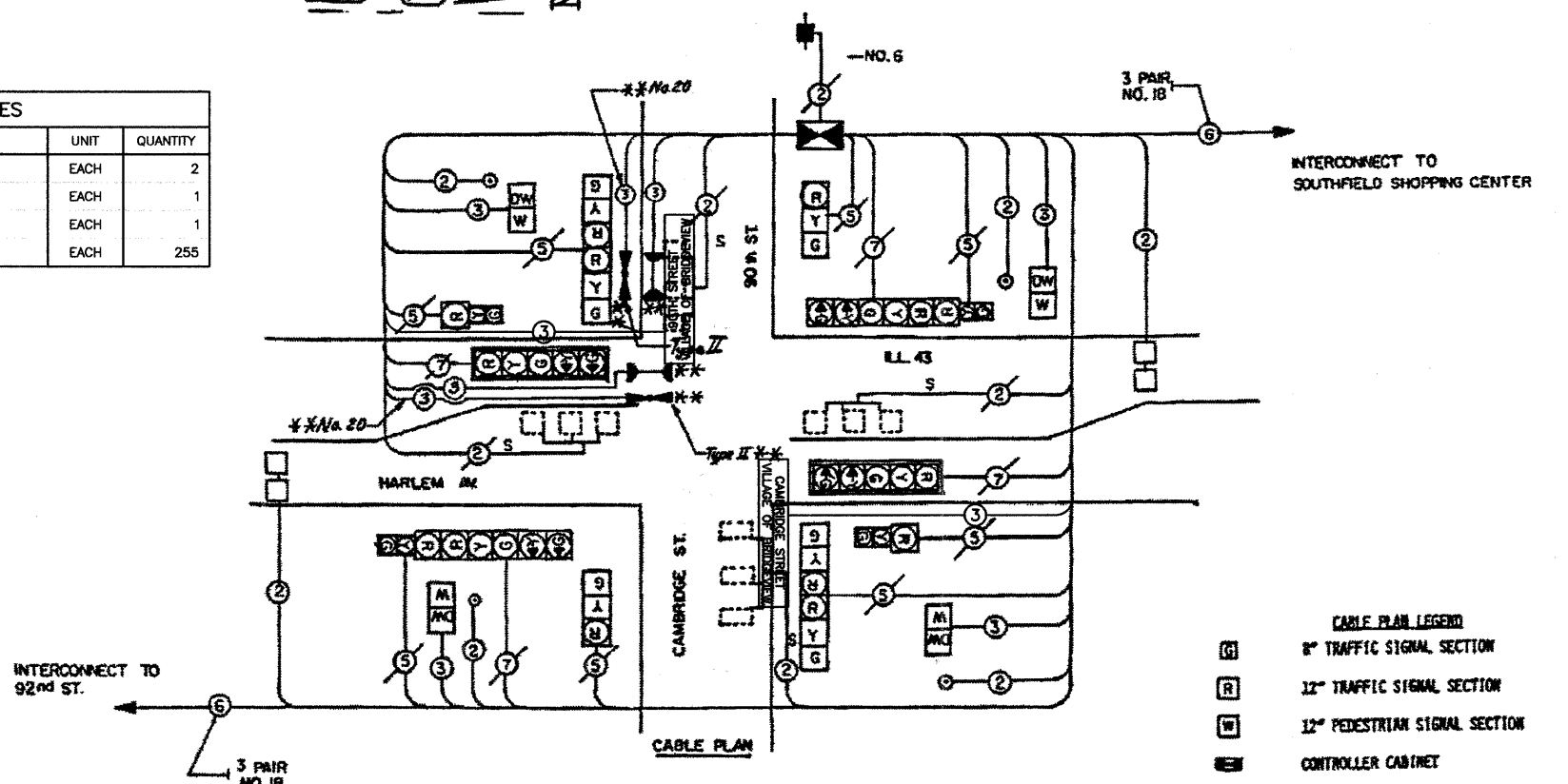
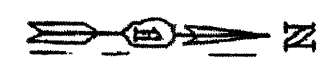
**PROPOSED EMERGENCY VEHICLE PREEMPTORS**

EMERGENCY VEHICLE PREEMPTOR	3	4
MOVEMENT	↑	→

**SCHEDULE OF QUANTITIES**  
 IL ROUTE 43 (HARLEM AVE) / 90th ST

CODE NUMBER	PAK ITEM DESCRIPTION	UNIT	QUANTITY
82401220	ELECTRIC CABLE IN CONDUIT, SIGNAL NO. 14 3C	FOOT	254
82202320	TRAFFIC SIGNAL POST, GALVANIZED STEEL, 18 FT	EACH	1
85000200	MAINTENANCE OF EXISTING TRAFFIC SIGNAL INSTALLATION	EACH	1
85200200	LIGHT DETECTOR AMPLIFIER	EACH	1
87300100	RELOCATE EXISTING SIGNAL HEAD	EACH	1
XX002398	TRAFFIC CONTROL AND PROTECTION, STANDARD 701701	FOOT	254
88240000	ELECTRIC CABLE IN CONDUIT NO. 20 SIG. TWISTED, SHIELDED	EACH	1
	LIGHT DETECTOR TYPE II		

~~\*\* THESE ITEMS INCLUDED IN CONTRACT FOR IMPROVEMENT OF EMERGENCY VEHICLE PREEMPTION EQUIPMENT.~~



\* THIS PLAN IS FOR THE PURPOSE OF INSTALLING L.E.D. ILLUMINATED STREET NAME SIGNS AS SHOWN PER PLAN. ALL OTHER EQUIPMENT SHALL BE DISREGARDED.

**SCHEDULE OF QUANTITIES**

QUANTITY	UNIT	ITEM
8	EACH	PEDESTRIAN SIGNAL HEAD, 1-FACE, BRACKET MOUNTED
1	EACH	FULL-ACTUATED CONTROLLER, STANDARD SEQUENCE IV, 8 PHASES, IN TYPE IV CABINET
1	EACH	TRANSMITTER
2	EACH	INDUCTION LOOP DETECTOR AMPLIFIER
132	LIN. FT.	DETECTOR LOOP, TYPE I
4	EACH	PEDESTRIAN PUSHBUTTON
28	LIN. FT.	UNIT DUCT, WITHOUT CABLE IN TRENCH 1"
429	LIN. FT.	ELECTRIC CABLE IN CONDUIT NO. 14 2/C
429	LIN. FT.	ELECTRIC CABLE IN CONDUIT NO. 14 3/C
663	LIN. FT.	ELECTRIC CABLE IN CONDUIT NO. 14 2/C TWISTED, SHIELDED
663	LIN. FT.	ELECTRIC CABLE IN CONDUIT NO. 18 3 PAIR TWISTED, SHIELDED
14	LIN. FT.	TRENCH AND BACKFILL
4	EACH	REBUILD EXISTING SIGNAL HEAD
1	EACH	REMOVE EXISTING TRAFFIC SIGNAL EQUIPMENT
4	EACH	RELOCATE EXISTING INDUCTION LOOP DETECTOR AMPLIFIER
607	LIN. FT.	PULL ELECTRIC CABLE FROM CONDUIT
1	EACH	MAINTENANCE OF EXISTING TRAFFIC SIGNAL INSTALLATION
1	EACH	PAINT EXISTING TRAFFIC SIGNAL EQUIPMENT
4	EACH	DRILL EXISTING HANDHOLE
768	LIN. FT.	THERMOPLASTIC PAVEMENT MARKING - LINE 6

- CABLE PLAN LEGEND**
- ⊙ 8" TRAFFIC SIGNAL SECTION
  - ⊙ 12" TRAFFIC SIGNAL SECTION
  - ⊙ 12" PEDESTRIAN SIGNAL SECTION
  - ⊙ CONTROLLER CABINET
  - ⊙ SERVICE INSTALLATION
  - ⊙ VEHICLE DETECTOR, INDUCTION LOOP
  - ⊙ PUSHBUTTON DETECTOR
  - ⊙ DENOTES NUMBER OF CONDUCTORS (NEX)
  - ⊙ ALL LOOP DETECTOR CABLE TO BE SHIELDED. ALL CABLE NO. 14 EXCEPT AS INDICATED.
  - ⊙ INDICATES EXISTING CABLE
  - ⊙ SIGNAL FACE WITH BACKPLATE
  - ⊙ "P" INDICATES PROGRAMMED
  - ⊙ EXISTING SIGNAL SECTION
  - ⊙ MAGNETIC DETECTOR
  - ⊙ OPTICAL DETECTOR, Proposed
  - ⊙ CONFIRMATION BEACON, Proposed

\* HARLEM AVENUE VILLAGE OF BRIDGEVIEW L.E.D. ILLUMINATED STREET NAME SIGN

LOCATION NO. 5