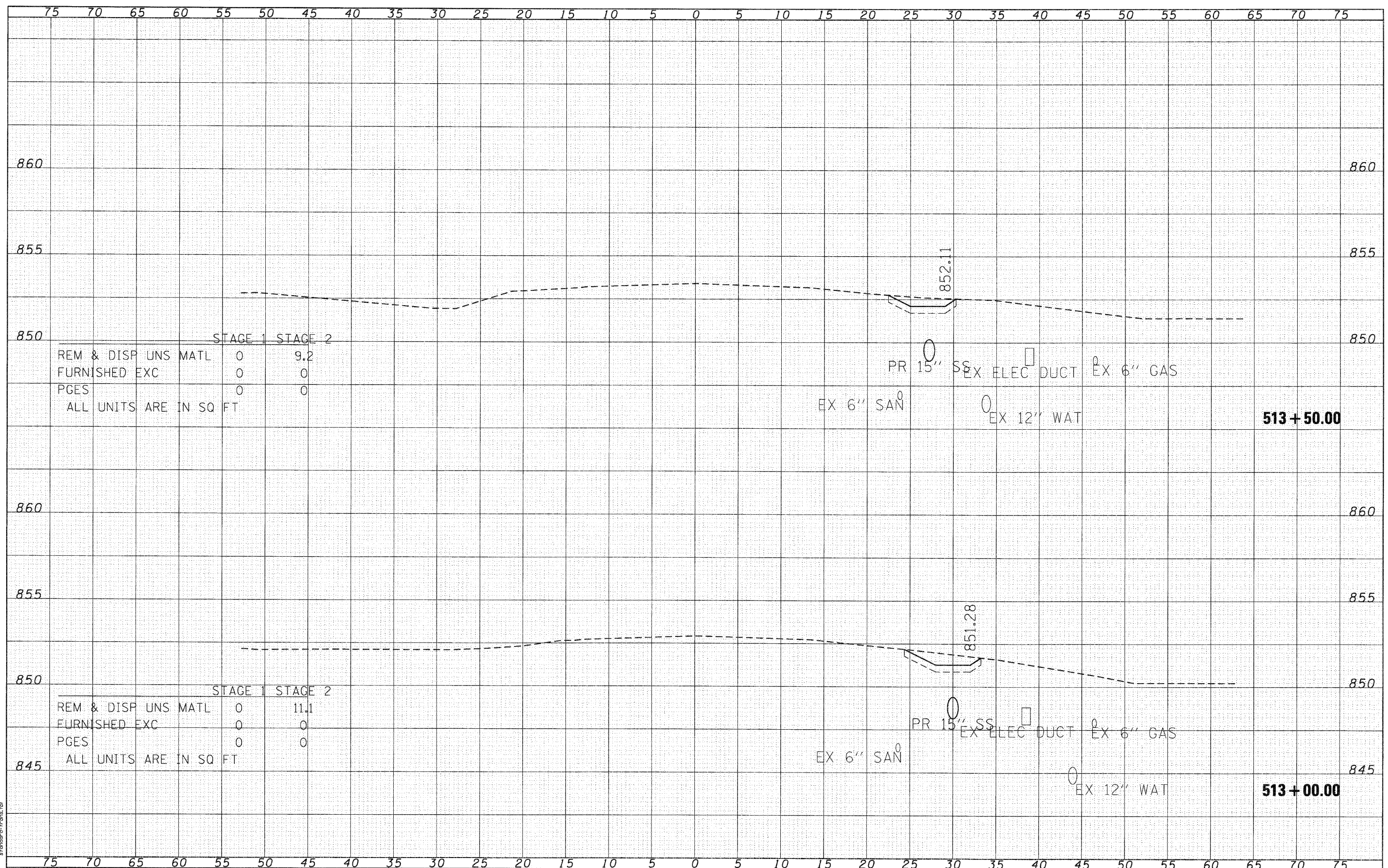


FINAL SURVEY NO.	DATE
SURVEYED	BY
NOTE BOOK	
TEMPLATE	
AREAS CHECKED	

ORIGINAL SURVEY NO.	DATE
SKETCHED	BY
PLOTTED	
NOTE BOOK	
TEMPLATE	
AREAS CHECKED	

SEC GROUP, INC.
 COMPANY NAME: SEC GROUP, INC.
 PROJECT CONTACT: A. JAIN
 CLIENT: VILLAGE OF CARPENTERSVILLE
 DATE PLOTTED: 11/2/2010 10:56:28 PM
 FILE NUMBER: 060206-100-000000.dgn
 PEN TABLE: Standard Tables.tbl



STAGE 1		STAGE 2	
REM & DISP UNS MATL	0	9.2	
FURNISHED EXC	0	0	
PGES	0	0	
ALL UNITS ARE IN SQ FT			

STAGE 1		STAGE 2	
REM & DISP UNS MATL	0	11.1	
FURNISHED EXC	0	0	
PGES	0	0	
ALL UNITS ARE IN SQ FT			

<p>SEC Group, Inc. 401 N. First Street Milwaukee, WI 53202-1700 L 818.261.1778 F 818.261.1781 www.secgroup.com</p>	USER NAME = CHor-1ke PLOT SCALE = 1" = 5' PLOT DATE = 11/2/2010	DESIGNED - C. HARTKE DRAWN - R. BEST CHECKED - T. HAMILTON DATE - 10/25/10	REVISED - REVISED - REVISED - REVISED -	VILLAGE OF CARPENTERSVILLE CROSS SECTIONS DUNDEE ROAD (IL ROUTE 68)	F.A. RTE. = SECTION = 06-00074-00-FP COUNTY = KANE TOTAL SHEETS = 211 SHEET NO. = 189	CONTRACT NO. = 63504 FED. ROAD DIST. NO. = ILLINOIS FED. AID PROJECT
	SCALE: 1" = 5' SHEET NO. 1 OF 23 SHEETS STA. 513+00.00 TO STA. 513+50.00					