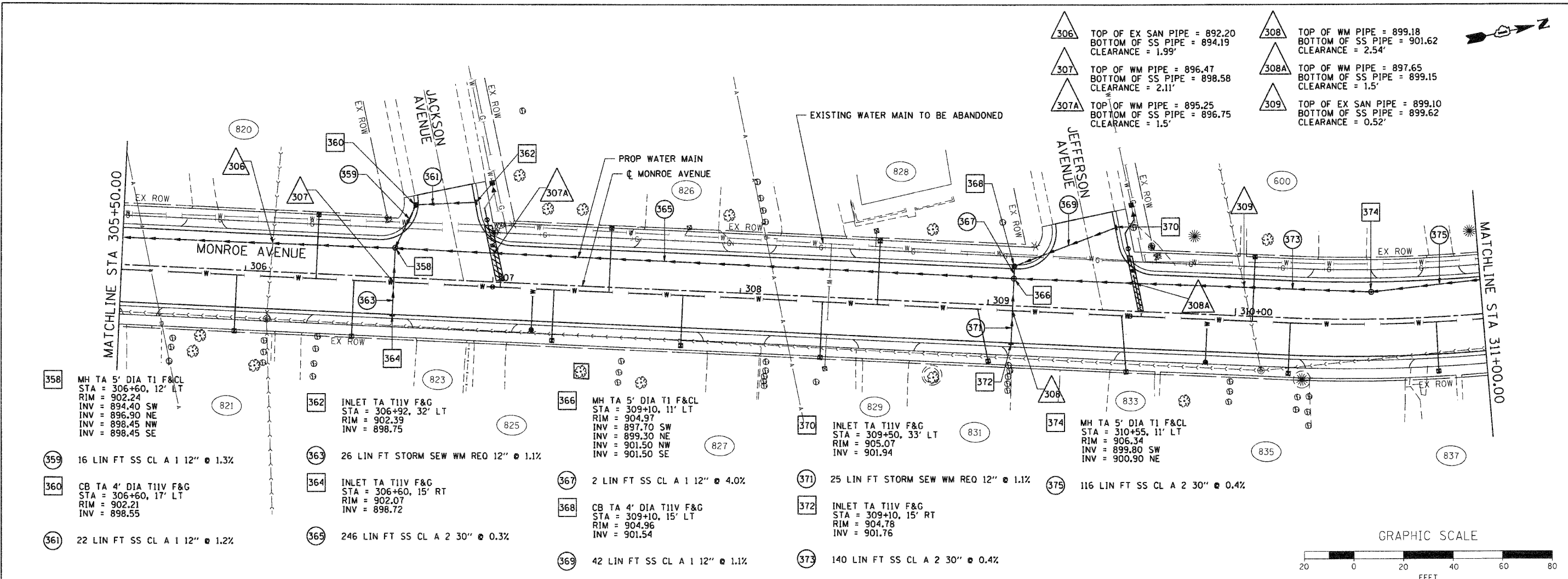


DATE	
BY	
SURVEYED	
PLANNED	
NOTED	
FILED	
NO.	

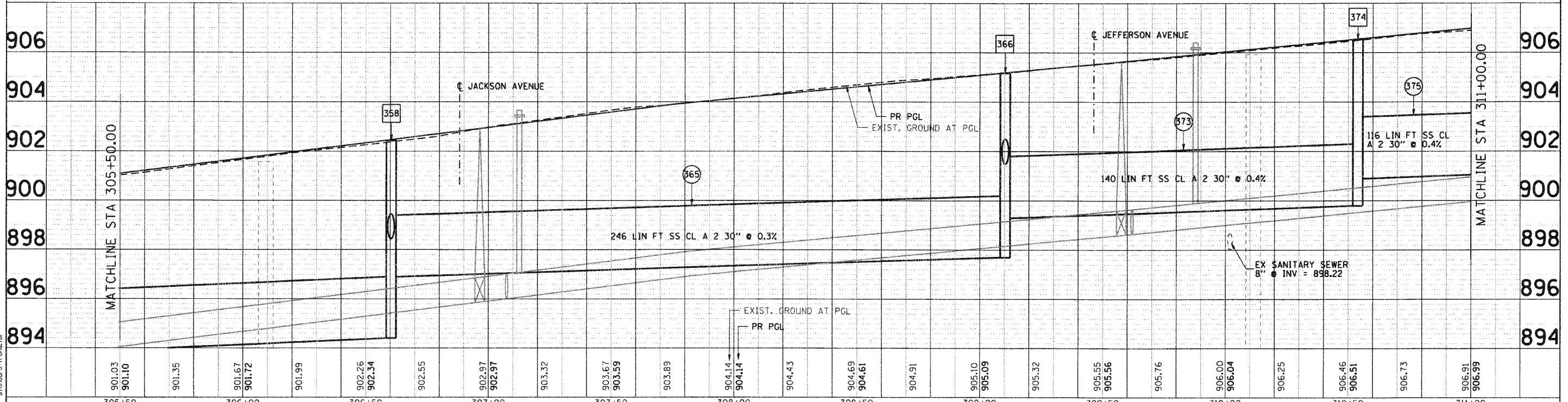
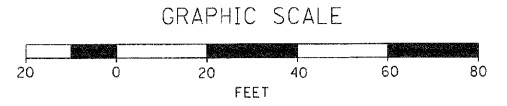
DATE	
BY	
SURVEYED	
PLANNED	
NOTED	
FILED	
NO.	

SEC GROUP, INC.
 PROJECT CONTACT:
 A. JAIN
 VILLAGE OF CARPENTERSVILLE
 CLIENT CONTACT:
 FILE NAME: 0600074-00-FP
 PLOT DRIVER: pefsch
 PLOT TABLE: standard-trans.tbl



306	TOP OF EX SAN PIPE = 892.20 BOTTOM OF SS PIPE = 894.19 CLEARANCE = 1.99'	308	TOP OF WM PIPE = 899.18 BOTTOM OF SS PIPE = 901.62 CLEARANCE = 2.54'
307	TOP OF WM PIPE = 896.47 BOTTOM OF SS PIPE = 898.58 CLEARANCE = 2.11'	308A	TOP OF WM PIPE = 897.65 BOTTOM OF SS PIPE = 899.15 CLEARANCE = 1.5'
307A	TOP OF WM PIPE = 895.25 BOTTOM OF SS PIPE = 896.75 CLEARANCE = 1.5'	309	TOP OF EX SAN PIPE = 899.10 BOTTOM OF SS PIPE = 899.62 CLEARANCE = 0.52'

- 358 MH TA 5' DIA T1 F&CL
STA = 306+60, 12' LT
RIM = 902.24
INV = 894.40 SW
INV = 896.90 NE
INV = 898.45 NW
INV = 898.45 SE
- 359 16 LIN FT SS CL A 1 12" @ 1.3%
- 360 CB TA 4' DIA T11V F&G
STA = 306+60, 17' LT
RIM = 902.21
INV = 898.55
- 361 22 LIN FT SS CL A 1 12" @ 1.2%
- 362 INLET TA T11V F&G
STA = 306+92, 32' LT
RIM = 902.39
INV = 898.75
- 363 26 LIN FT STORM SEW WM REQ 12" @ 1.1%
- 364 INLET TA T11V F&G
STA = 306+60, 15' RT
RIM = 902.07
INV = 898.72
- 365 246 LIN FT SS CL A 2 30" @ 0.3%
- 366 MH TA 5' DIA T1 F&CL
STA = 309+10, 11' LT
RIM = 904.97
INV = 897.70 SW
INV = 899.30 NE
INV = 901.50 NW
INV = 901.50 SE
- 367 2 LIN FT SS CL A 1 12" @ 4.0%
- 368 CB TA 4' DIA T11V F&G
STA = 309+10, 15' LT
RIM = 904.96
INV = 901.54
- 369 42 LIN FT SS CL A 1 12" @ 1.1%
- 370 INLET TA T11V F&G
STA = 309+50, 33' LT
RIM = 905.07
INV = 901.94
- 371 25 LIN FT STORM SEW WM REQ 12" @ 1.1%
- 372 INLET TA T11V F&G
STA = 309+10, 15' RT
RIM = 904.78
INV = 901.76
- 373 140 LIN FT SS CL A 2 30" @ 0.4%
- 374 MH TA 5' DIA T1 F&CL
STA = 310+55, 11' LT
RIM = 906.34
INV = 899.80 SW
INV = 900.90 NE
- 375 116 LIN FT SS CL A 2 30" @ 0.4%



305+50	306+00	306+50	307+00	307+50	308+00	308+50	309+00	309+50	310+00	310+50	311+00																							
901.03	901.10	901.35	901.67	901.72	901.99	902.26	902.34	902.55	902.97	902.97	903.32	903.67	903.59	903.89	904.14	904.14	904.43	904.69	904.61	904.91	905.10	905.09	905.32	905.55	905.56	905.76	906.00	906.04	906.25	906.46	906.51	906.73	906.91	906.99

<p>SEC Group, Inc. An HDR Group Company 420 N. First Street Madison, IL 62201-2138 P: 618.262.1778 F: 618.262.1781 www.secgroup.com</p>	USER NAME = CHa-uke PLOT SCALE = 1" = 20' PLOT DATE = 11/1/2010	DESIGNED - A. JAIN DRAWN - S. PERNAL CHECKED - T. HAMILTON DATE - 10/25/10	REVISED - REVISED - REVISED - REVISED -	VILLAGE OF CARPENTERSVILLE DRAINAGE AND UTILITY PLAN AND PROFILE MONROE AVENUE	SCALE: 1" = 20' SHEET NO. 14 OF 21 SHEETS STA. 305+50 TO STA. 311+00	F.A. RTE. SECTION COUNTY TOTAL SHEETS SHEET NO. 06-00074-00-FP KANE 211 62 FAU 2414, FAU 1280, FAP 343 CONTRACT NO. 63504 FED. ROAD DIST. NO. [ILLINOIS] FED. AID PROJECT
--	---	---	--	---	--	--