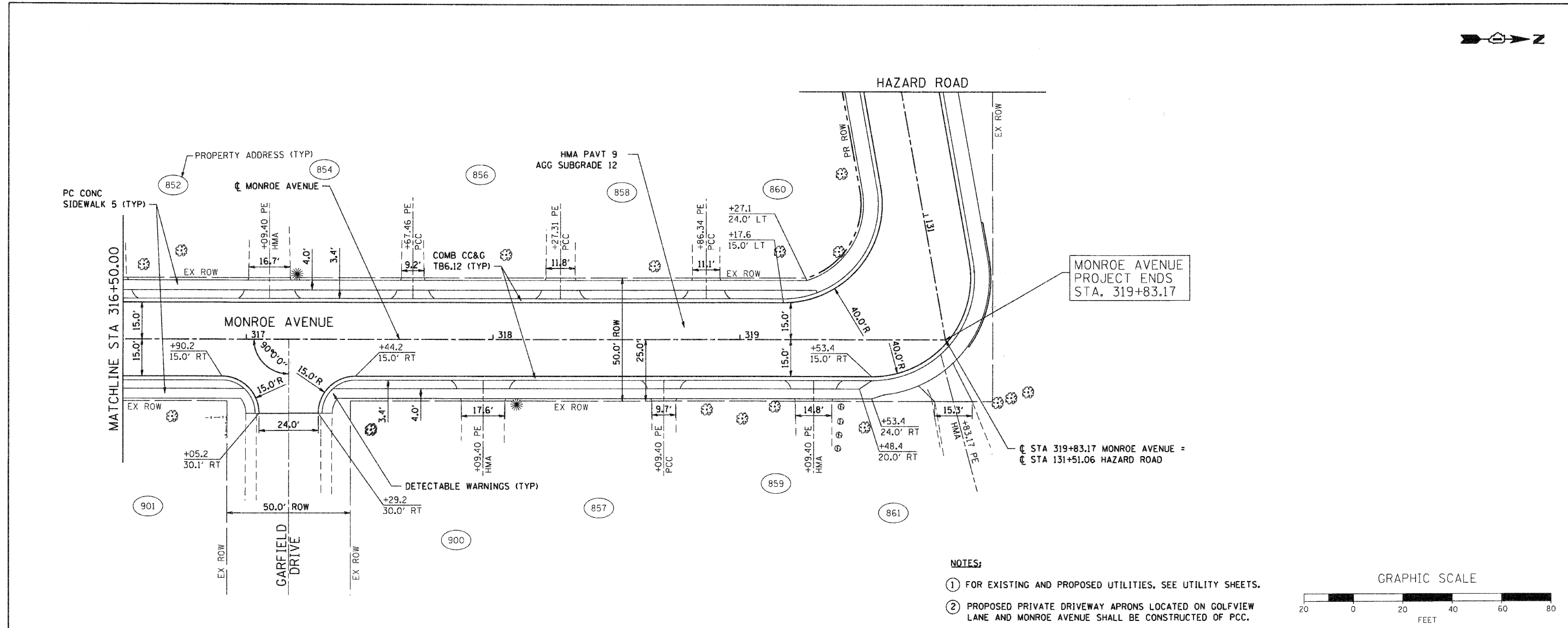


| | |
|-------------|------|
| PLAN | DATE |
| BY | |
| REVISIONS | |
| NO. | |
| DATE | |
| BY | |
| DESCRIPTION | |
| 1 | |
| 2 | |
| 3 | |
| 4 | |
| 5 | |
| 6 | |
| 7 | |
| 8 | |
| 9 | |
| 10 | |

| | |
|-------------|------|
| PROFILE | DATE |
| BY | |
| REVISIONS | |
| NO. | |
| DATE | |
| BY | |
| DESCRIPTION | |
| 1 | |
| 2 | |
| 3 | |
| 4 | |
| 5 | |
| 6 | |
| 7 | |
| 8 | |
| 9 | |
| 10 | |

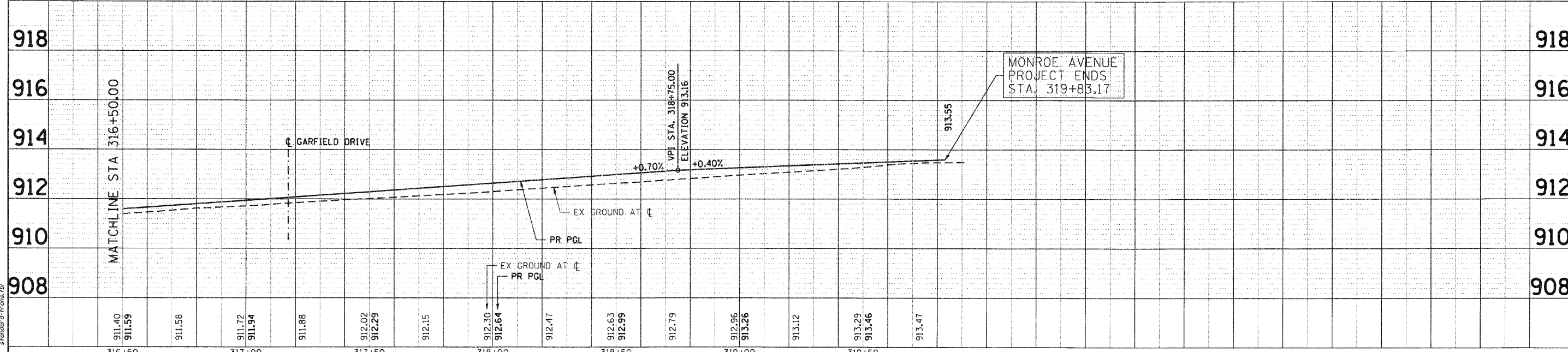
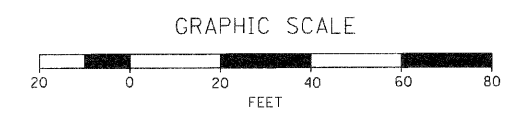
COMPANY NAME: SEC GROUP, INC.
 PROJECT CONTACT: A. JAIN
 PROJECT: VILLAGE OF CARPENTERSVILLE
 DATE PLOTTED: 11/1/2010 5:55:01 PM
 PLOT DATE: 11/1/2010
 PLOT BY: J. HAMILTON
 PEN TABLE: standard-trace.tbl



MONROE AVENUE PROJECT ENDS STA. 319+83.17

MONROE AVENUE PROJECT ENDS STA. 319+83.17

- NOTES:**
- ① FOR EXISTING AND PROPOSED UTILITIES, SEE UTILITY SHEETS.
 - ② PROPOSED PRIVATE DRIVEWAY APRONS LOCATED ON GOLFVIEW LANE AND MONROE AVENUE SHALL BE CONSTRUCTED OF PCC.



| | | | | | | |
|------------------|--------|------------------|--------|------------------|--------|------------------|
| 316+50 | 317+00 | 317+50 | 318+00 | 318+50 | 319+00 | 319+50 |
| 911.40 911.59 | 911.58 | 911.72 911.94 | 911.88 | 912.02 912.29 | 912.15 | 912.30 912.64 |
| | | | | | | 912.47 |
| | | | | | | 912.63 912.99 |
| | | | | | | 912.79 |
| | | | | | | 912.96 913.26 |
| | | | | | | 913.12 |
| | | | | | | 913.29 913.46 |
| | | | | | | 913.47 |

SEC Group, Inc.
 2010 Professional Design Firm # 198-000106
 2010 SEC Group Company
 620 N. Third Street
 Moline, IL 61902-2138
 T. 815.388.1778 F. 815.388.1751
 www.secgroupinc.com
 secgroupinc.com

| | | |
|-----------------------|-----------------------|-----------|
| USER NAME = CHer-ukg | DESIGNED - C. HARTKE | REVISED - |
| PLOT SCALE = 1" = 20' | DRAWN - R. BEST | REVISED - |
| PLOT DATE = 11/1/2010 | CHECKED - T. HAMILTON | REVISED - |
| | DATE - 10/25/10 | REVISED - |

VILLAGE OF CARPENTERSVILLE

**PLAN AND PROFILE
MONROE AVENUE**

SCALE: 1" = 20' SHEET NO. 16 OF 20 SHEETS STA. 316+50 TO STA. END

| | | | | |
|---|----------------|--------------------|--------------|-----------|
| F.A. RTE. | SECTION | COUNTY | TOTAL SHEETS | SHEET NO. |
| | 06-00074-00-FP | KANE | 211 | 35 |
| FAU 2414, FAU 1280, FAP 343 | | CONTRACT NO. 63504 | | |
| FED. ROAD DIST. NO. ILLINOIS FED. AID PROJECT | | | | |