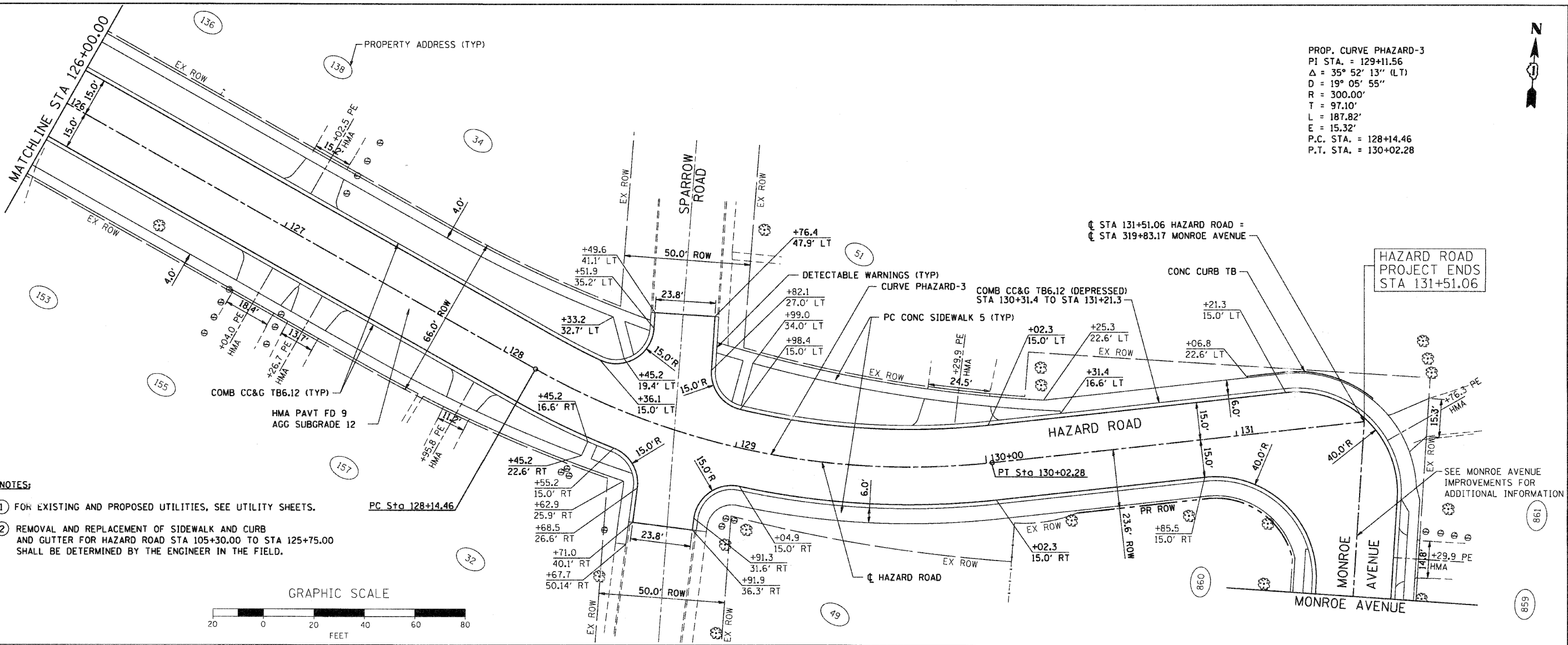
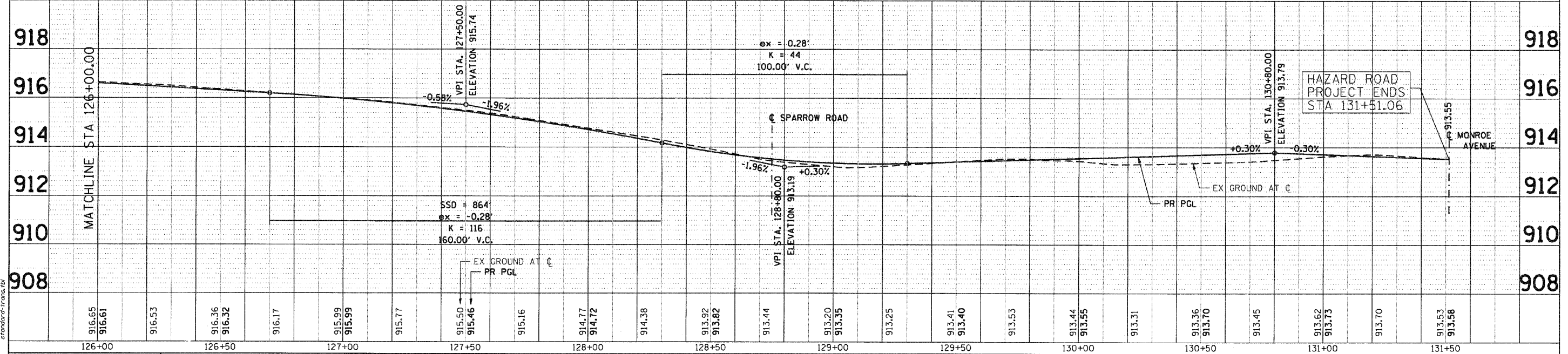
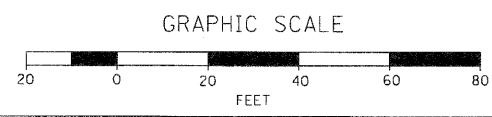




PROP. CURVE PHAZARD-3
 PI STA. = 129+11.56
 $\Delta = 35^\circ 52' 13''$ (LT)
 $D = 19^\circ 05' 55''$
 $R = 300.00'$
 $T = 97.10'$
 $L = 187.82'$
 $E = 15.32'$
 P.C. STA. = 128+14.46
 P.T. STA. = 130+02.28



- NOTES:**
- FOR EXISTING AND PROPOSED UTILITIES, SEE UTILITY SHEETS.
 - REMOVAL AND REPLACEMENT OF SIDEWALK AND CURB AND GUTTER FOR HAZARD ROAD STA 105+30.00 TO STA 125+75.00 SHALL BE DETERMINED BY THE ENGINEER IN THE FIELD.



PLAN	DATE
REVISED	BY
NOTE BOOK	NO.
ALIGNMENT CHECKED	NO.
CONSTRUCTION CHECKED	NO.
ROAD FILE NAME	

PROFILE	DATE
REVISED	BY
GRADES CHECKED	NO.
STRUCTURE NOTATIONS OK'D	NO.

SEC GROUP, INC.
 A. JAIN
 VILLAGE OF CARPENTERSVILLE
 11/17/2010 5:49:08 PM
 06026-ppp-05.dgn
 11/17/2010 5:49:08 PM
 06026-ppp-05.dgn

SEC Group, Inc.
 An HR Group Company
 420 N. First Street
 Moline, IL 61704-2178
 T 314.585.7788 F 314.585.0781
 www.secgroupinc.com
 Minority & Women Owned Business Enterprise

USER NAME = C-Hartke	DESIGNED - C. HARTKE	REVISED -
PLOT SCALE = 1" = 20'	DRAWN - R. BEST	REVISED -
PLOT DATE = 11/17/2010	CHECKED - T. HAMILTON	REVISED -
	DATE - 10/25/10	REVISED -

VILLAGE OF CARPENTERSVILLE

**PLAN AND PROFILE
HAZARD ROAD**

SCALE: 1" = 20' SHEET NO. 5 OF 20 SHEETS STA. 128+00 TO STA. END

F.A. RTE.	SECTION	COUNTY	TOTAL SHEETS	SHEET NO.
	06-00074-00-FP	KANE	211	24
*FAU 2414, FAU 1280, FAP 343		CONTRACT NO. 63504		
FED. ROAD DIST. NO. ILLINOIS FED. AID PROJECT				