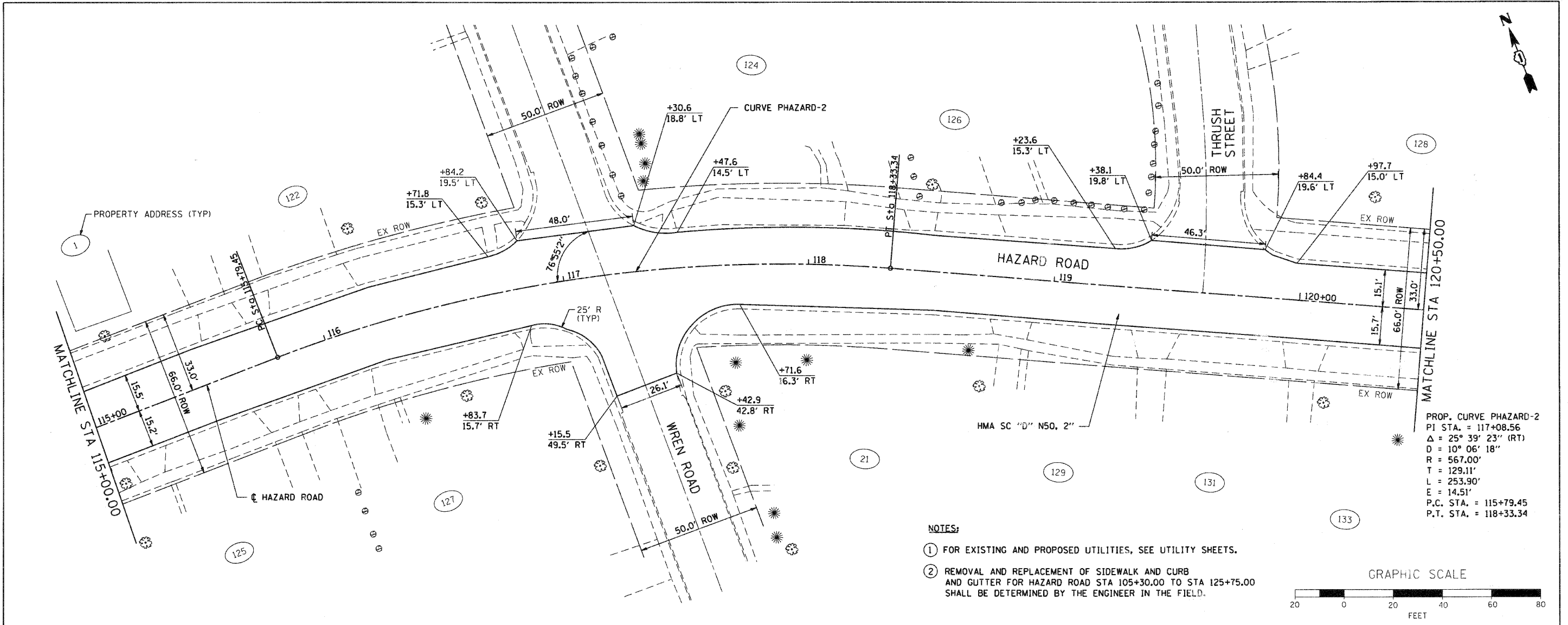


PLAN	SURVEYED	DATE
NOTE BOOK	PLOTTED	BY
NO.	CHECKED	
	BY	
	DATE	
	FILE NAME	
	CADD FILE NAME	

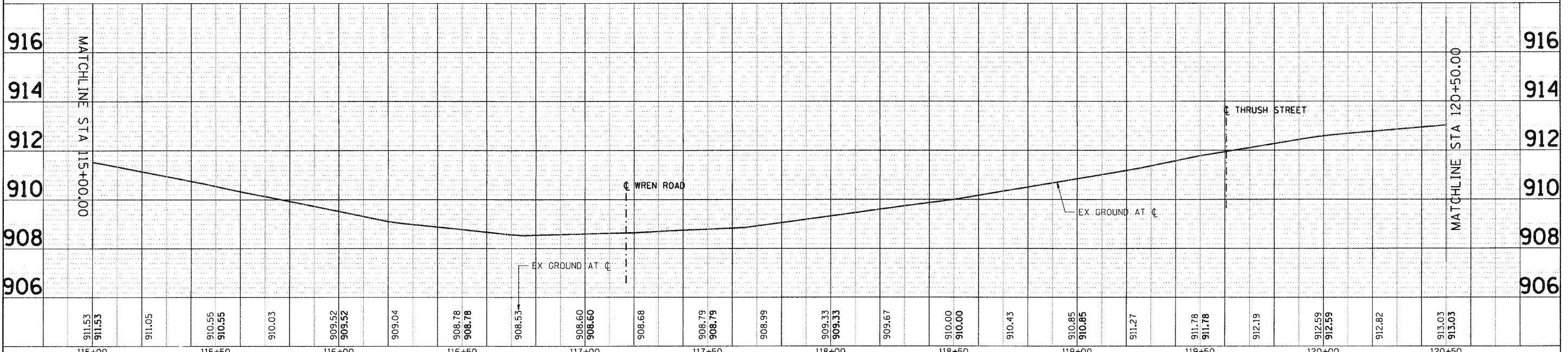
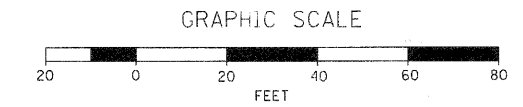
PROFILE	SURVEYED	DATE
NOTE BOOK	PLOTTED	BY
NO.	CHECKED	
	BY	
	DATE	
	FILE NAME	
	CADD FILE NAME	

SEC GROUP, INC.
 PROJECT CONTACT: A. JAIN
 VILLAGE OF CARPENTERSVILLE
 400 N. First Street
 Carpentersville, IL 61813
 618-241-1100
 618-241-1101
 618-241-1102
 618-241-1103
 618-241-1104
 618-241-1105
 618-241-1106
 618-241-1107
 618-241-1108
 618-241-1109
 618-241-1110
 618-241-1111
 618-241-1112
 618-241-1113
 618-241-1114
 618-241-1115
 618-241-1116
 618-241-1117
 618-241-1118
 618-241-1119
 618-241-1120
 618-241-1121
 618-241-1122
 618-241-1123
 618-241-1124
 618-241-1125
 618-241-1126
 618-241-1127
 618-241-1128
 618-241-1129
 618-241-1130
 618-241-1131
 618-241-1132
 618-241-1133
 618-241-1134
 618-241-1135
 618-241-1136
 618-241-1137
 618-241-1138
 618-241-1139
 618-241-1140



PROP. CURVE PHAZARD-2
 PI STA. = 117+08.56
 Δ = 25° 39' 23" (RT)
 D = 10° 06' 18"
 R = 567.00'
 T = 129.11'
 L = 253.90'
 E = 14.51'
 P.C. STA. = 115+79.45
 P.T. STA. = 118+33.34

- NOTES:
- FOR EXISTING AND PROPOSED UTILITIES, SEE UTILITY SHEETS.
 - REMOVAL AND REPLACEMENT OF SIDEWALK AND CURB AND GUTTER FOR HAZARD ROAD STA 105+30.00 TO STA 125+75.00 SHALL BE DETERMINED BY THE ENGINEER IN THE FIELD.



115+00	115+50	116+00	116+50	117+00	117+50	118+00	118+50	119+00	119+50	120+00	120+50											
911.53	911.05	910.55	910.03	909.52	909.04	908.78	908.53	908.60	908.68	908.79	908.99	909.33	909.67	910.00	910.43	910.85	911.27	911.78	912.19	912.59	912.82	913.03

SEC Group, Inc.
 An HR Green Company
 400 N. First Street
 Carpentersville, IL 61813
 618-241-1100
 618-241-1101
 618-241-1102
 618-241-1103
 618-241-1104
 618-241-1105
 618-241-1106
 618-241-1107
 618-241-1108
 618-241-1109
 618-241-1110
 618-241-1111
 618-241-1112
 618-241-1113
 618-241-1114
 618-241-1115
 618-241-1116
 618-241-1117
 618-241-1118
 618-241-1119
 618-241-1120
 618-241-1121
 618-241-1122
 618-241-1123
 618-241-1124
 618-241-1125
 618-241-1126
 618-241-1127
 618-241-1128
 618-241-1129
 618-241-1130
 618-241-1131
 618-241-1132
 618-241-1133
 618-241-1134
 618-241-1135
 618-241-1136
 618-241-1137
 618-241-1138
 618-241-1139
 618-241-1140

USER NAME = CHor-1k	DESIGNED - C. HARTKE	REVISED -
PLOT SCALE = 1" = 20'	DRAWN - R. BEST	REVISED -
PLOT DATE = 11/1/2010	CHECKED - T. HAMILTON	REVISED -
	DATE - 10/25/10	REVISED -

VILLAGE OF CARPENTERSVILLE

**PLAN AND PROFILE
 HAZARD ROAD**

SCALE: 1" = 20' SHEET NO. 3 OF 20 SHEETS STA. 115+00 TO STA. 120+50

F.A. RTE.	SECTION	COUNTY	TOTAL SHEETS	SHEET NO.
	06-00074-00-FP	KANE	211	22
	FAU 2414, FAU 1280, FAP 343			CONTRACT NO. 63504
FED. ROAD DIST. NO.	ILLINOIS FED. AID PROJECT			