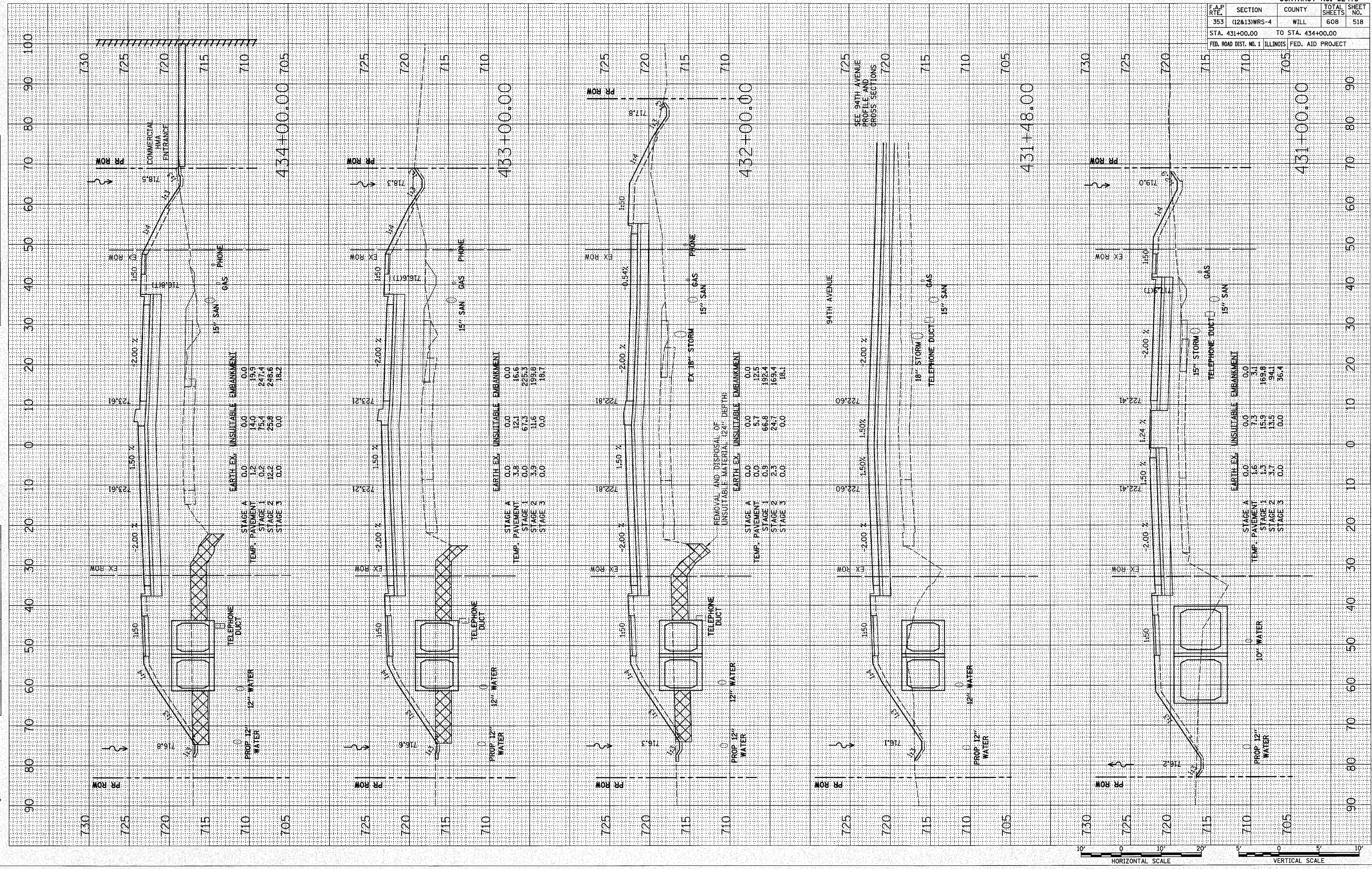


DATE: \_\_\_\_\_ BY: \_\_\_\_\_  
 SURVEYED: \_\_\_\_\_  
 SURVEY: \_\_\_\_\_  
 FINAL: \_\_\_\_\_  
 NOTE BOOK: \_\_\_\_\_  
 NO.: \_\_\_\_\_  
 AREAS CHECKED: \_\_\_\_\_

DATE: \_\_\_\_\_ BY: \_\_\_\_\_  
 SURVEYED: \_\_\_\_\_  
 SURVEY: \_\_\_\_\_  
 ORIGINAL: \_\_\_\_\_  
 NO.: \_\_\_\_\_  
 AREAS CHECKED: \_\_\_\_\_

PLOT DATE = 5/18/2010  
 FILE NAME = S:\1351\road\1351\1351.dwg  
 PLOT SCALE = 1/8" = 100'  
 USER NAME = bjb

F.A.P. RTE.	SECTION	COUNTY	TOTAL SHEETS	SHEET NO.
353	(12&13)WRS-4	WILL	608	518
STA. 431+00.00		TO STA. 434+00.00		
FED. ROAD DIST. NO. 1		ILLINOIS FED. AID PROJECT		



REMOVAL AND DISPOSAL OF UNSUITABLE MATERIAL (24" DEPTH)

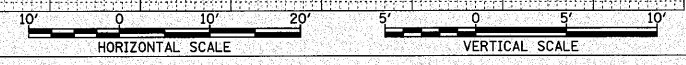
STAGE	TEMP. PAVEMENT	EARTH EX.	UNSUITABLE	EMBANKMENT
STAGE A	0.0	0.0	0.0	0.0
STAGE 1	0.0	3.8	12.1	16.6
STAGE 2	0.0	0.0	67.3	226.3
STAGE 3	0.0	3.9	11.6	199.8
TOTAL	0.0	7.7	81.0	242.7

REMOVAL AND DISPOSAL OF UNSUITABLE MATERIAL (24" DEPTH)

STAGE	TEMP. PAVEMENT	EARTH EX.	UNSUITABLE	EMBANKMENT
STAGE A	0.0	0.0	0.0	0.0
STAGE 1	0.0	5.7	12.5	18.2
STAGE 2	0.0	66.8	192.4	259.2
STAGE 3	0.0	2.3	24.7	169.4
TOTAL	0.0	74.8	219.6	346.6

REMOVAL AND DISPOSAL OF UNSUITABLE MATERIAL (24" DEPTH)

STAGE	TEMP. PAVEMENT	EARTH EX.	UNSUITABLE	EMBANKMENT
STAGE A	0.0	0.0	0.0	0.0
STAGE 1	1.6	7.3	15.9	169.8
STAGE 2	1.3	13.5	94.1	127.9
STAGE 3	3.7	0.0	0.0	36.4
TOTAL	6.6	20.8	110.0	334.1



U.S. ROUTE 30