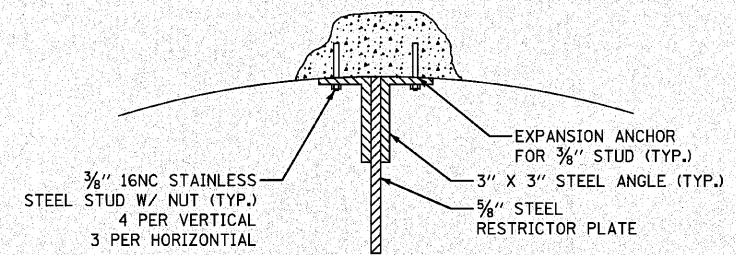
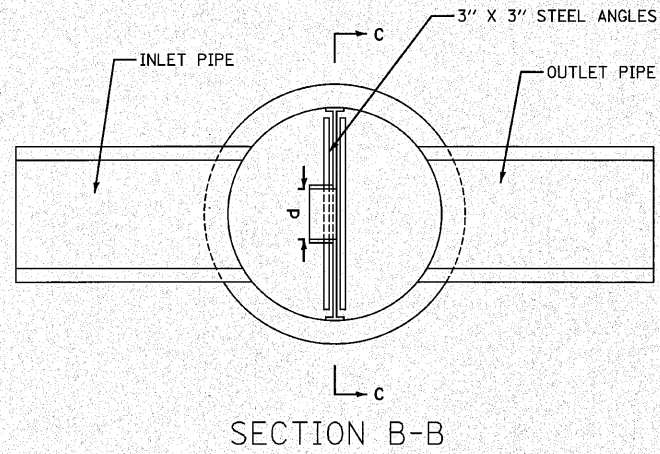
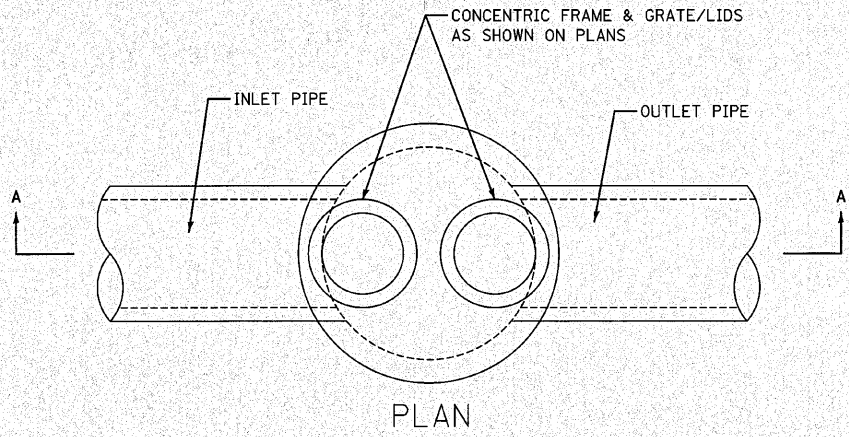
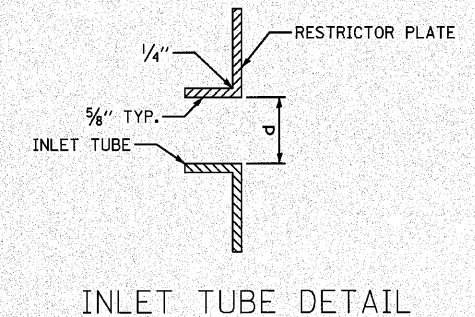
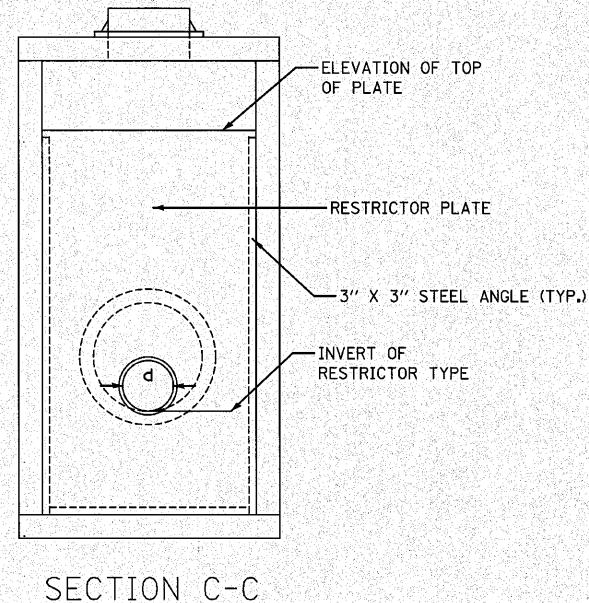
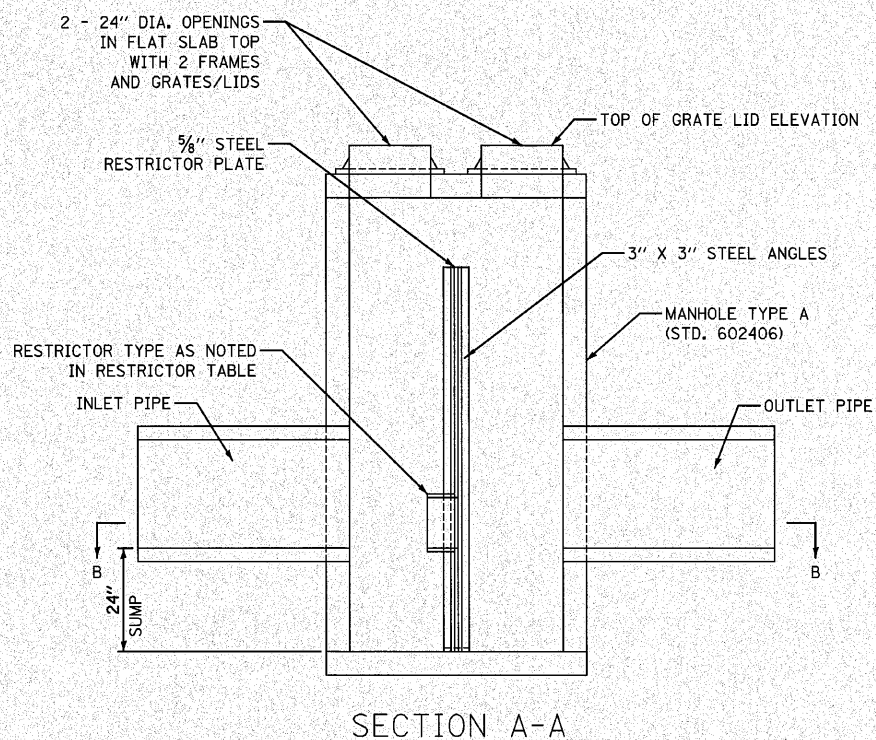


F.A.P. RTE.	SECTION	COUNTY	TOTAL SHEETS	SHEET NO.
353	(12&13)WRS-4	WILL	608	497
STA.		TO STA.		
FED. ROAD DIST. NO. 1 ILLINOIS FED. AID PROJECT				



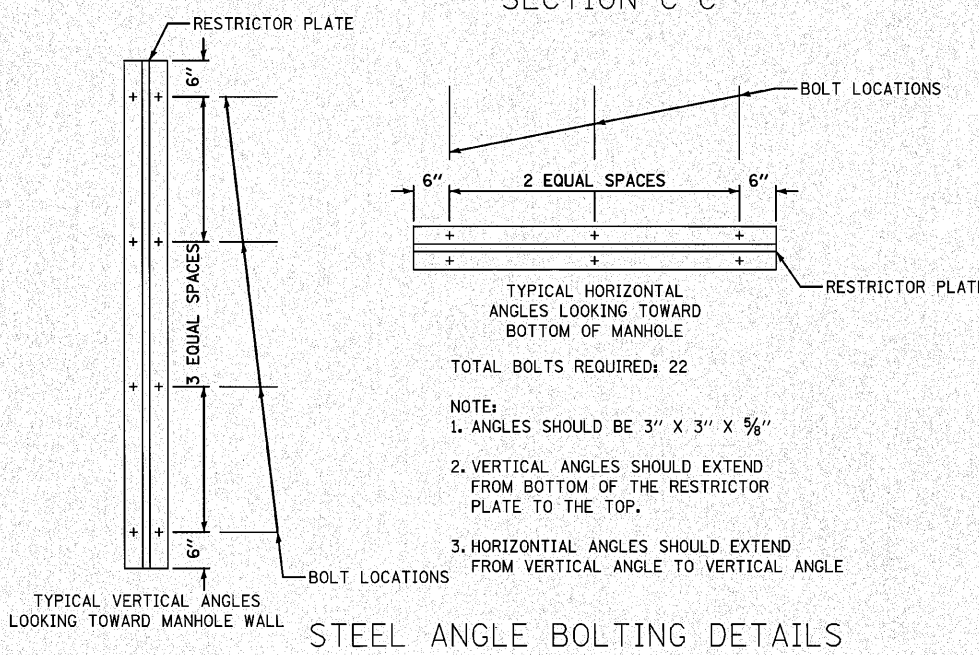
- NOTE:
1. ALL STEEL ANGLES AND PLATES TO BE GALVANIZED AFTER FABRICATION
 2. ALL RESTRICTOR PLATES, ANGLES AND HARDWARE TO BE INCLUDED IN THE COST OF THE MANHOLE
 3. BASIS OF PAYMENT: "MANHOLES TYPE A, 6 FT DIAMETER, WITH 2 TYPE 1 FRAME, OPEN LIDS, RESTRICTOR PLATE" PER EACH



RESTRICTOR TYPE					
1	2	3	4	5	6
RE-ENTRANT TUBE	SHARP EDGED	SQUARE EDGED	RE-ENTRANT TUBE	SQUARE EDGED	ROUNDED
LENGTH 1/2 TO 1 DIA.		STREAM CLEARS SIDES	LENGTH 2-1/2 DIA.	LENGTH 2-1/2 DIA.	
C=.52	C=.61	C=.61	C=.73	C=.82	C=.98

VALUES OF "C" FOR CIRCULAR AND SQUARE ORIFICES

STATION	MANHOLE DIAMETER	FRAME AND GRATE	RESTRICTOR TYPE	INSIDE RESTRICTOR TYPE DIAMETER IN. (d)	INVERT OF RESTRICTOR TYPE	ELEVATION OF TOP OF PLATE OVERFLOW
520+30 RT	6'	2-T-1-0L	SHARP EDGED	13	696.73	702.88
516+20 LT	6'	2-T-1-0L	SHARP EDGED	17	696.71	700.76
543+20 LT	6'	2-T-1-0L	SHARP EDGED	8	722.94	727.20
545+44 LT	6'	2-T-1-0L	SHARP EDGED	14	720.70	727.46



REVISIONS		ILLINOIS DEPARTMENT OF TRANSPORTATION
NAME	DATE	
		U.S. ROUTE 30 RESTRICTOR DETAILS

SCALE: VERT. NOT TO SCALE
DATE DATE 6/11/2010
DRAWN BY JRR
CHECKED BY JRV