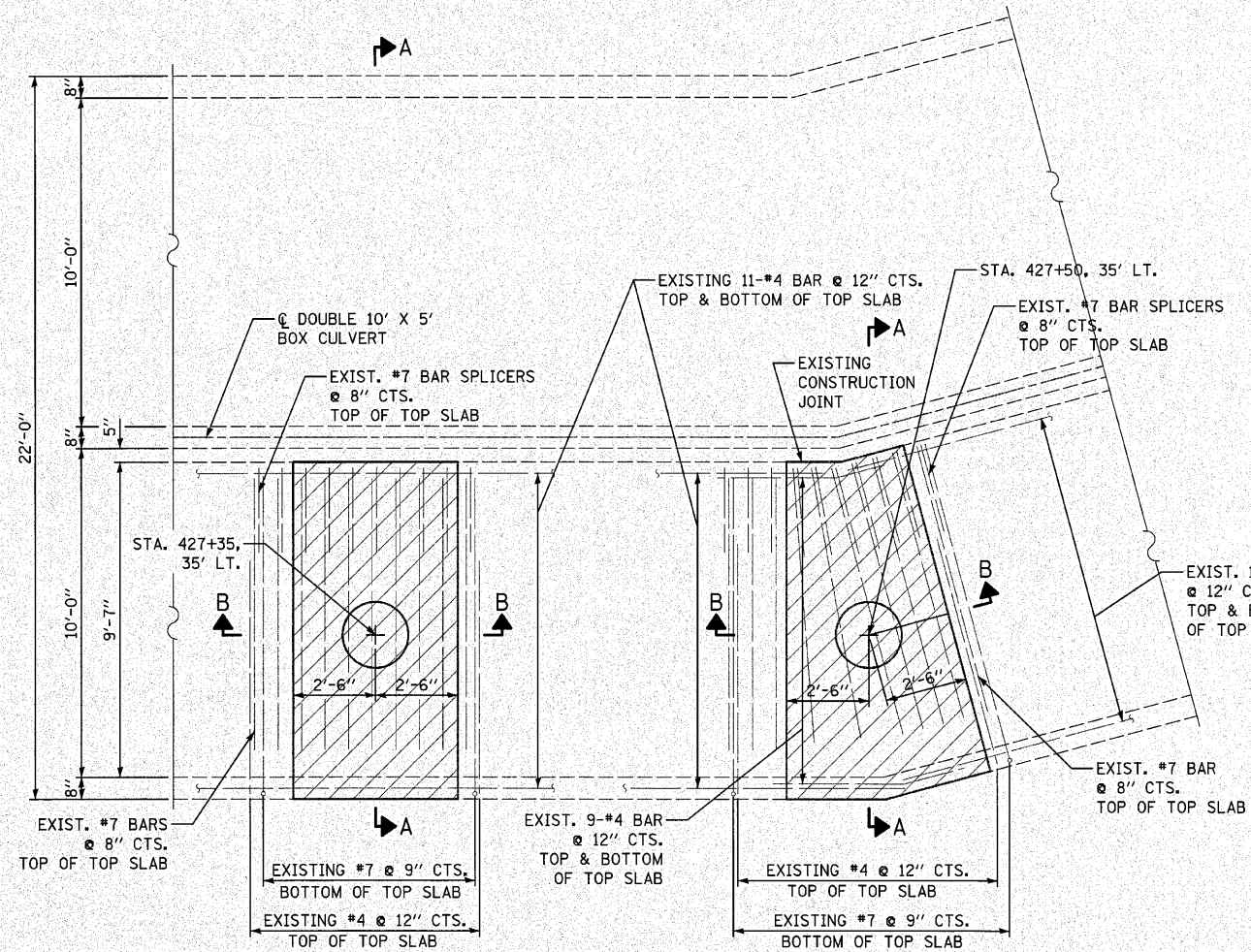
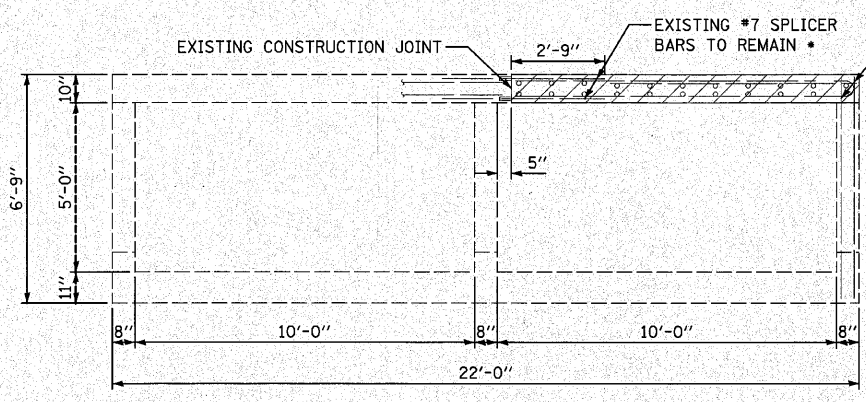


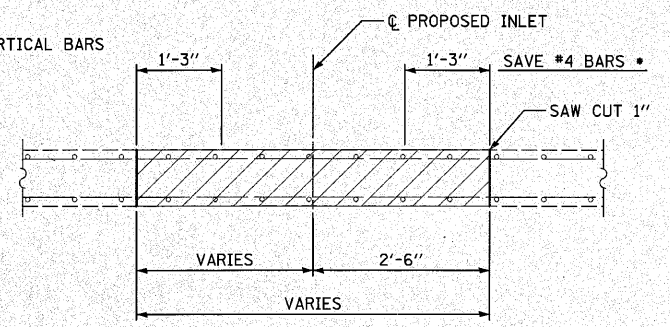
F.A.P. R.T.E.	SECTION	COUNTY	TOTAL SHEETS	SHEET NO.
353	(12&13)WRS-4	WILL	608	493
STA.		TO STA.		
FED. ROAD DIST. NO. 1 ILLINOIS FED. AID PROJECT				



TOP SLAB PLAN  
(CONCRETE REMOVAL)

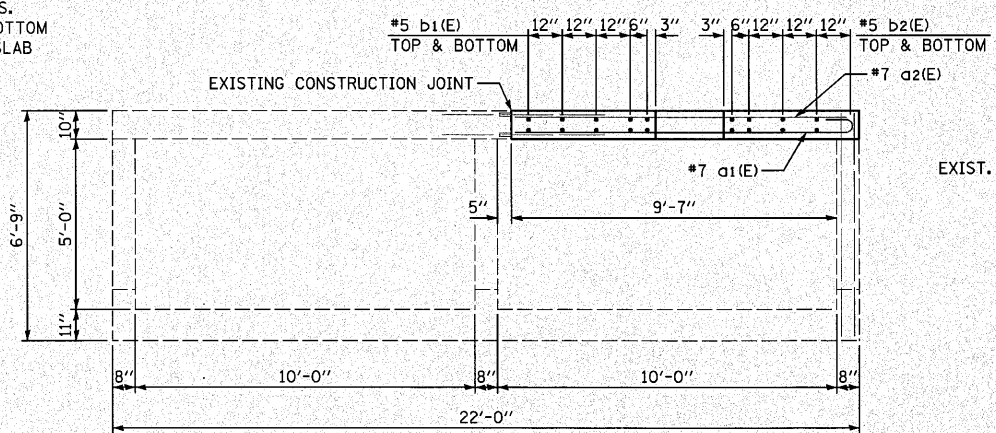


SECTION A-A  
(CONCRETE REMOVAL)

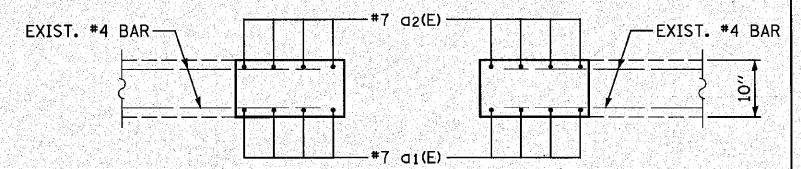


SECTION B-B  
(CONCRETE REMOVAL)

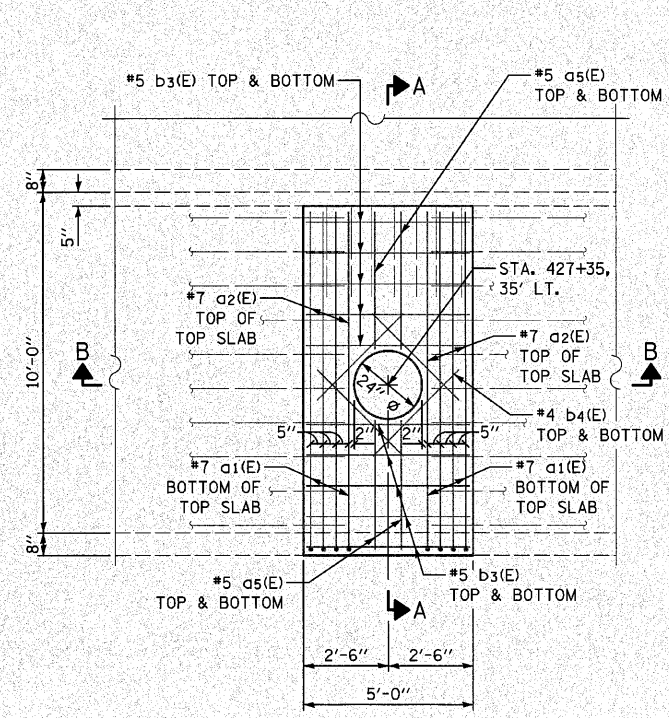
\* EXISTING REINFORCEMENT BARS THAT ARE TO REMAIN IN PLACE SHALL BE BLAST CLEANED TO GRAY METAL. BLAST CLEANING SHALL BE INCLUDED WITH THE COST OF CONCRETE REMOVAL.



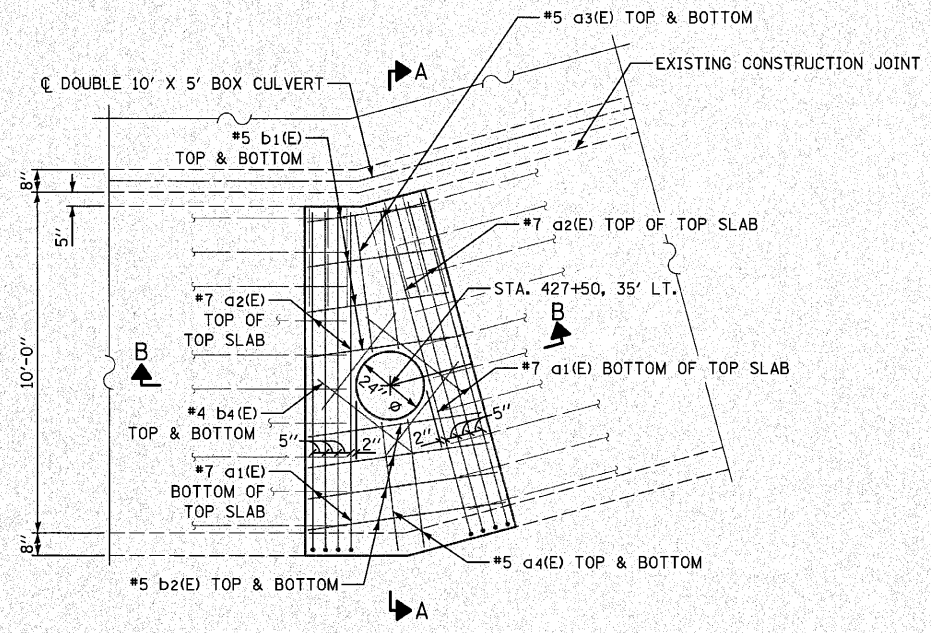
SECTION A-A  
(CONCRETE REPLACEMENT)



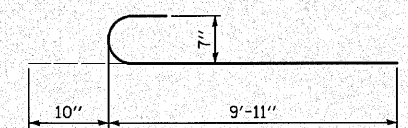
SECTION B-B  
(CONCRETE REPLACEMENT)



PLAN - TOP SLAB  
(CONCRETE REPLACEMENT)



PLAN - TOP SLAB  
(CONCRETE REPLACEMENT)



BAR a1(E)

BILL OF REINFORCEMENT

BAR NO.	SIZE	LENGTH	SHAPE
a1(E)	16	7	10'-9"
a2(E)	16	7	9'-11"
a3(E)	4	5	4'-2"
a4(E)	4	5	3'-6"
a5(E)	8	5	3'-9"
b1(E)	16	5	3'-10"
b2(E)	16	5	5'-0"
b3(E)	20	5	4'-8"
b4(E)	16	4	4'-0"
ITEM		UNIT	TOTAL
CONCRETE REMOVAL		CU. YD.	3.2
REINFORCEMENT BARS, EPOXY COATED		LB.	1030
CONCRETE BOX CULVERTS		CU. YD.	3.0

REVISIONS	DATE

ILLINOIS DEPARTMENT OF TRANSPORTATION  
 BOX CULVERT TOP SLAB RECONSTRUCTION  
 U.S. ROUTE 30  
 STA. 427+35, 35' LT. & STA. 427+50, 35' LT.  
 SCALE: VERT. \_\_\_\_\_  
 HORIZ. \_\_\_\_\_  
 DATE 6/11/2010  
 DRAWN BY JRR  
 CHECKED BY JRV