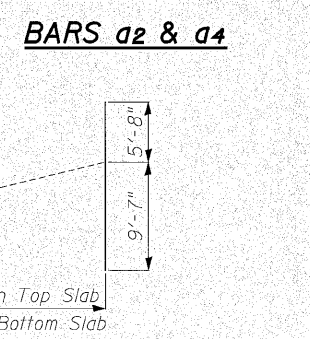
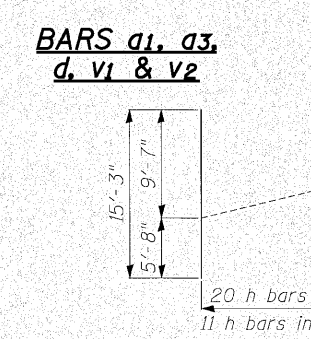
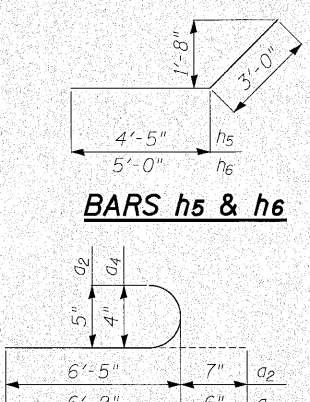
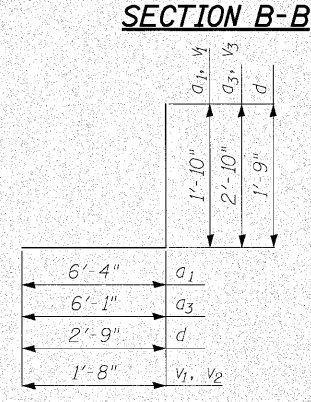
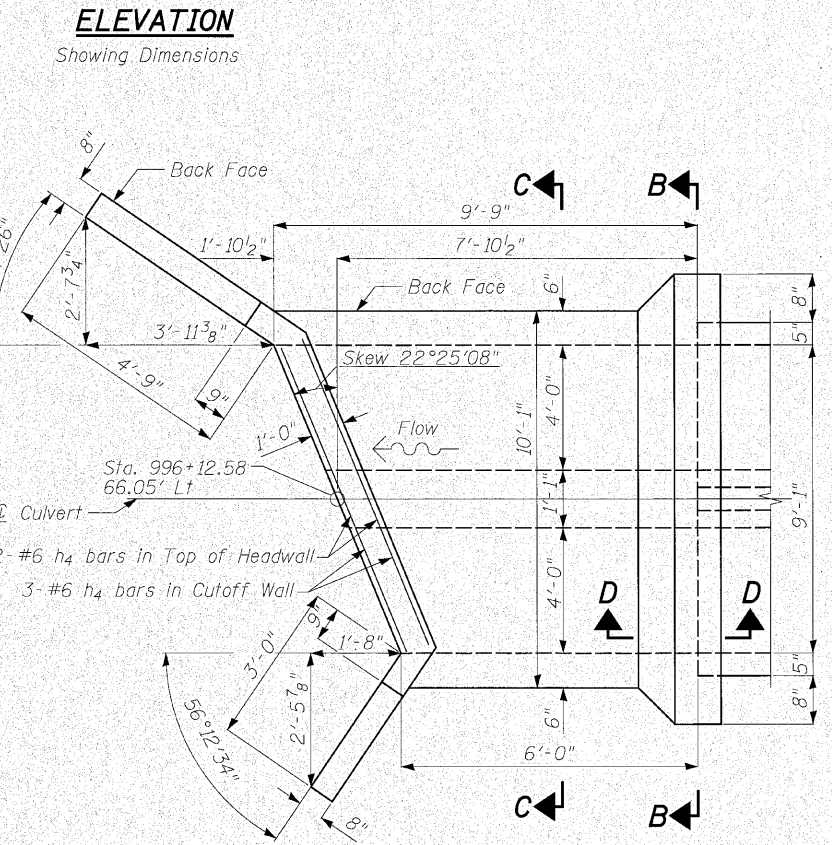
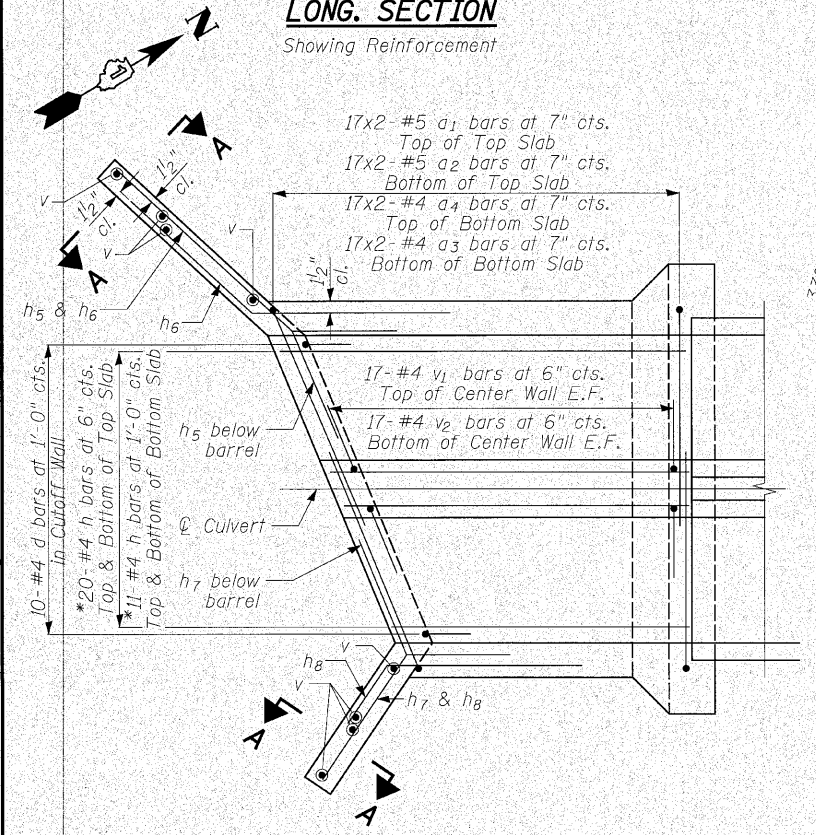
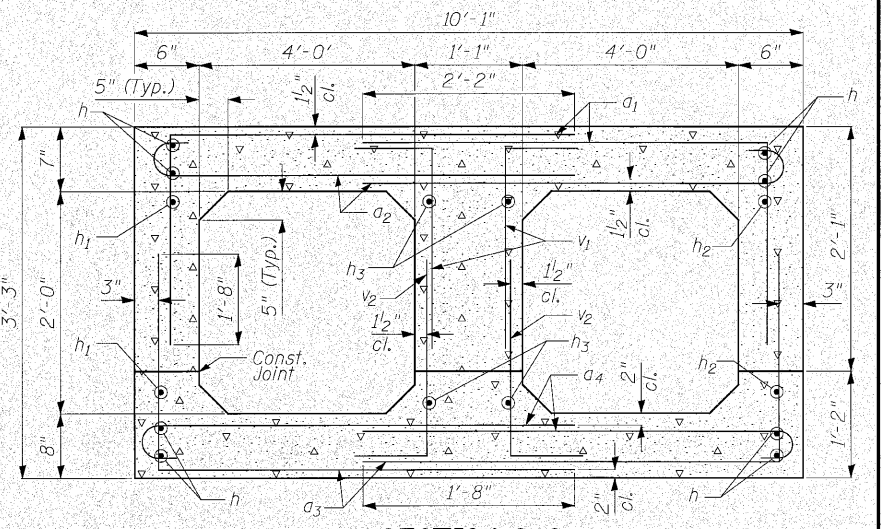
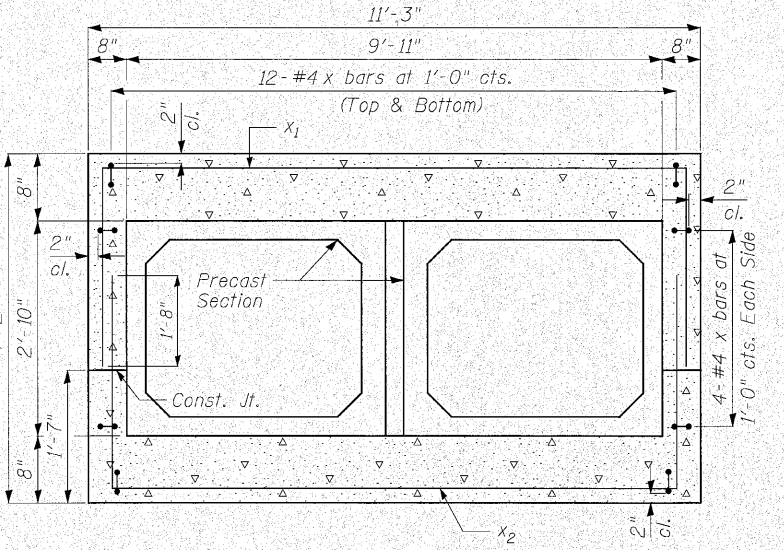
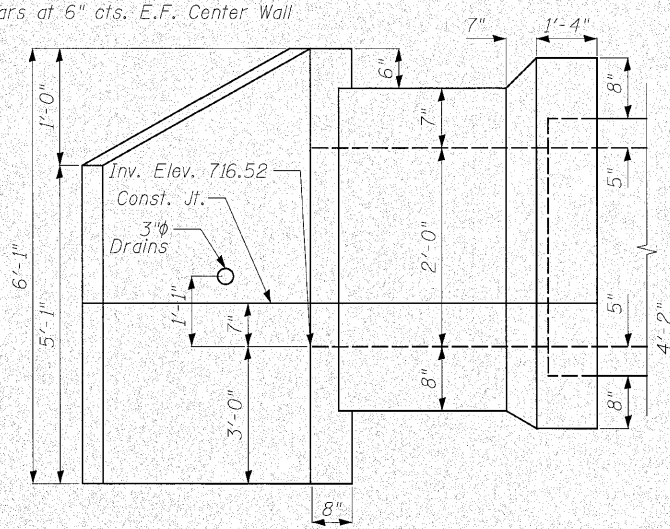
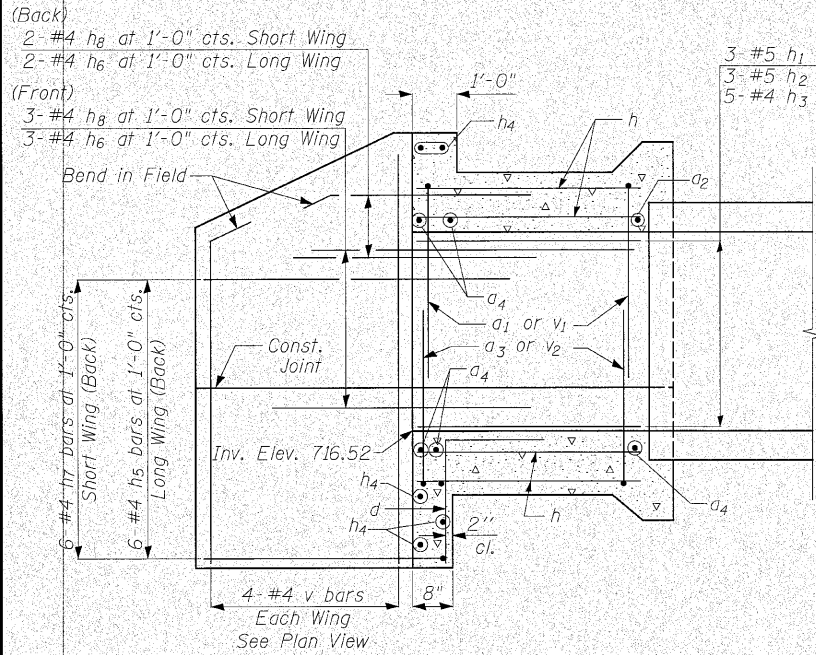
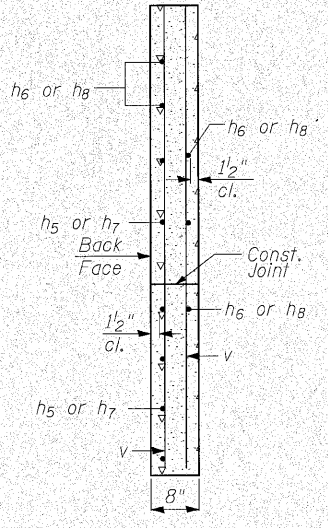


STATE OF ILLINOIS
DEPARTMENT OF TRANSPORTATION

ROUTE NO.	SECTION	COUNTY	TOTAL SHEETS	SHEET NO.	SHEET NO. 4
353	(12&13)WRS-4	Will	608	479	9 SHEETS
FED. ROAD DIST. NO. 7		ILLINOIS	FED. AID PROJECT		Contract No. 62478



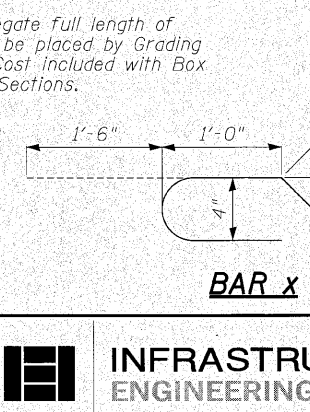
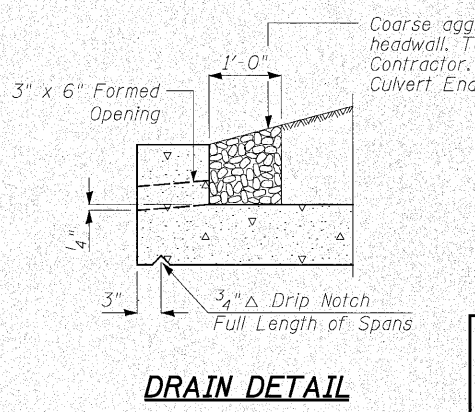
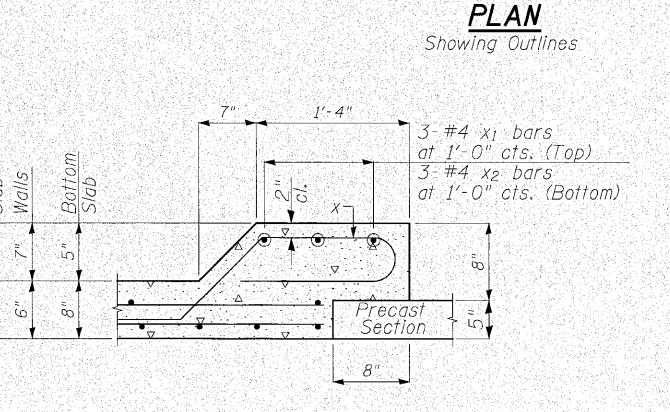
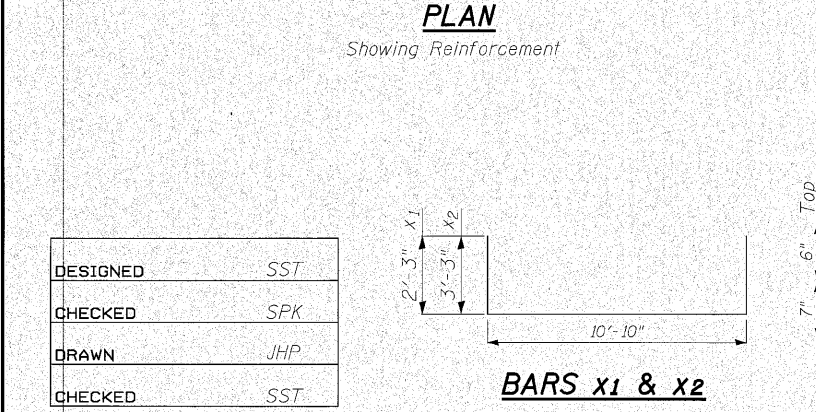
***FIELD CUTTING DIAGRAM**
Order bars full length. Cut to fit as shown and place in the bottom of the slab. Use remainder of bars in the top of the slab.



BILL OF MATERIAL

Bar	No.	Size	Length	Shape
a ₁	34	#5	8'-2"	┌
a ₂	34	#5	7'-0"	┌
a ₃	34	#4	8'-11"	┌
a ₄	34	#4	6'-8"	┌
d	10	#4	4'-6"	┌
h	31	#4	15'-3"	┌
h ₁	3	#5	5'-8"	┌
h ₂	3	#5	9'-5"	┌
h ₃	10	#4	7'-6"	┌
h ₄	5	#6	10'-4"	┌
h ₅	6	#4	7'-5"	┌
h ₆	5	#4	8'-0"	┌
h ₇	6	#4	6'-2"	┌
h ₈	5	#4	5'-5"	┌
v	8	#4	5'-9"	┌
v ₁	34	#4	3'-6"	┌
v ₂	34	#4	4'-6"	┌
x	32	#4	5'-3"	┌
x ₁	3	#4	15'-4"	┌
x ₂	3	#4	17'-4"	┌
Concrete Structures			Cu. Yd.	8.4
Reinforcement Bars			Pound	1,900

Notes:
Quantity of Concrete Structures and Reinforcement Bars is shown for information only.
Bars indicated thus 17x2-#5 etc. indicates 17 lines of bars with 2 lengths per line.



DESIGNED	SST
CHECKED	SPK
DRAWN	JHP
CHECKED	SST

INFRASTRUCTURE ENGINEERING INCORPORATED
33 West Monroe | Suite 1540 | Chicago, IL 60603
P 312.425.9550 | F 312.425.9564 | www.infrastructure-eng.com

END SECTION D
U.S. ROUTE 30 OVER
DRAINAGE DITCH
F.A.P. ROUTE 353 SEC. (12&13)WRS-4
WILL COUNTY
STATION 579+38.78
STRUCTURE NO. 099-C028

P:\P-03\1505\Drawings\Final\Design\579+38.78\Drawings\Sheets\culv579-sh4ESD.dgn 3:50:23 PM 6/9/2010