

Benchmark:
 BM# 12 Chiseled square on 5 foot headwall at southwest corner of U.S. Route 30 and Harlem Avenue.
 Elevation 722.44.

Existing Structures:

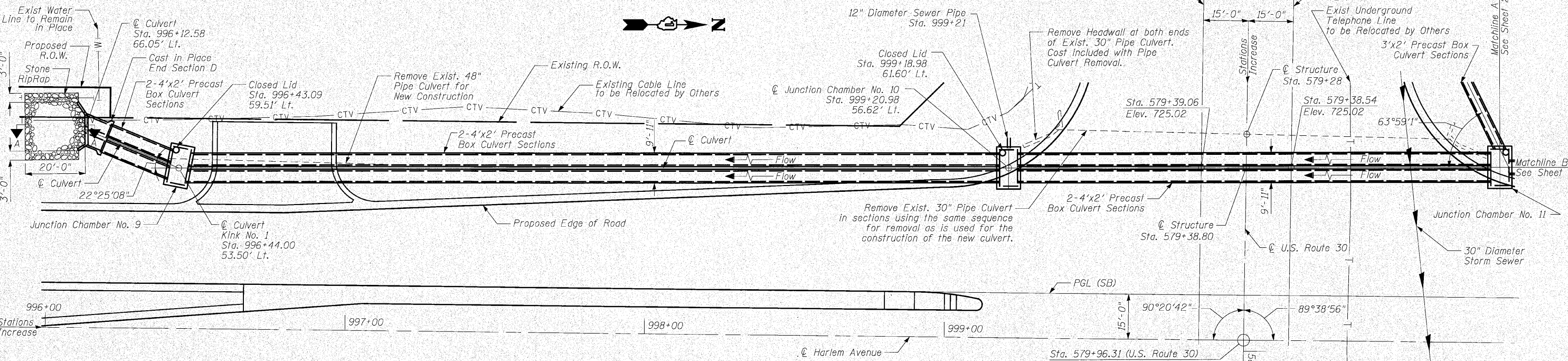
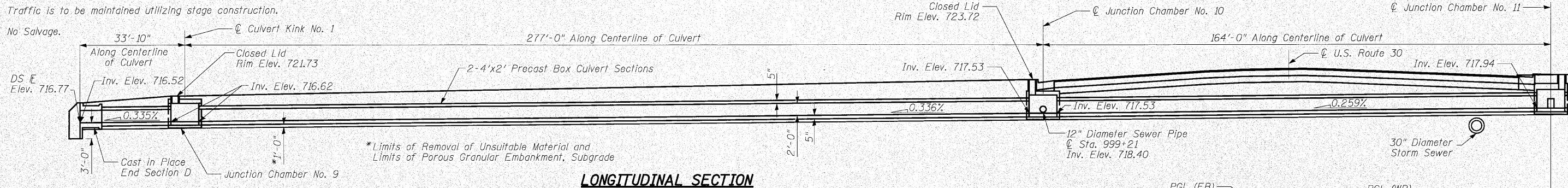
- 48" Diameter Pipe Culvert, 71'-7" Long, under Driveway, 56 Feet West of \odot Harlem Avenue at Station 996+76.
- 15" Diameter Pipe Culvert, 50'-6" Long, under Driveway, 55 Feet West of \odot Illinois Route 43 at Station 1001+99.
- 15" Diameter Pipe Culvert, 44'-3" Long, under Driveway, 54 Feet North of \odot U.S. Route 30 at Station 577+04.
- 15" Diameter Pipe Culvert, 50'-7" Long, under Driveway, 58 Feet North of \odot U.S. Route 30 at Station 578+33.
- 30" Diameter Pipe Culvert, 131'-11" Long, under U.S. Route 30 at Station 579+28.

Traffic is to be maintained utilizing stage construction.

No Salvage.

STATE OF ILLINOIS
 DEPARTMENT OF TRANSPORTATION

ROUTE NO.	SECTION	COUNTY	POST MILE	SHEET NO.
353	(12&13)WRS-4	Will	608	9
CONTRACT NO. 62478				SHEETS
				9



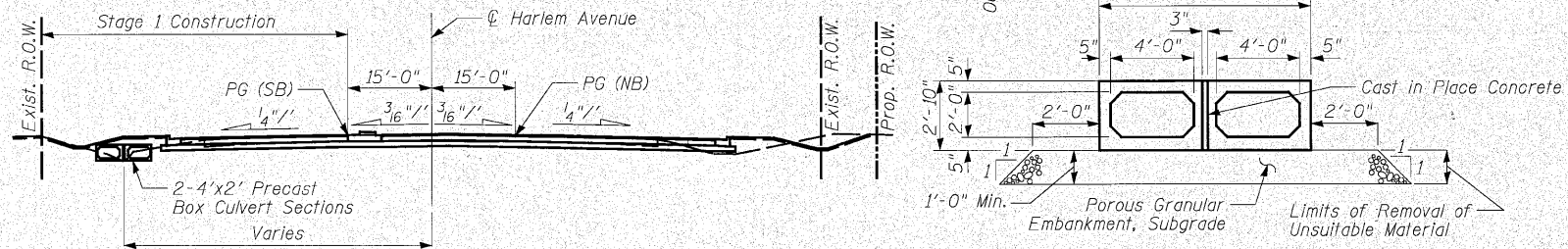
INDEX OF CULVERT DRAWINGS

Sheet No.	Title
1	Partial General Plan (1 of 3)
2	Partial General Plan (2 of 3)
3	Partial General Plan (3 of 3)
4	End Section D
5	End Section E
6	End Section F
7	Junction Chamber No. 9
8	Junction Chamber No. 10
9	Junction Chamber No. 11

TOTAL BILL OF MATERIAL

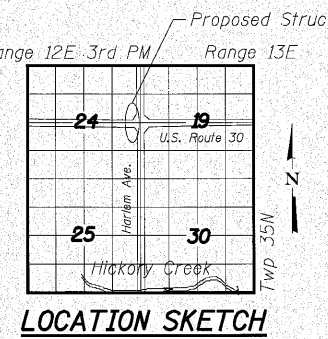
Item	Unit	Total
Removal and Disposal of Unsuitable Material	Cu Yd	470
Porous Granular Embankment, Subgrade	Cu Yd	440
Stone Riprap, Class A4	Sq Yd	72
Filter Fabric	Sq Yd	72
Pipe Culvert Removal	Foot	349
Box Culvert End Section, Culvert No. 3	Each	3
Precast Concrete Box Culvert 3'x2'	Foot	275
Precast Concrete Box Culvert 4'x2'	Foot	1,145
Manholes, Type A, 7" Diameter, Type 1 Frame, Closed Lid	Each	3
Junction Chamber No. 9	Each	1
Junction Chamber No. 10	Each	1
Junction Chamber No. 11	Each	1

PLAN



SECTION THRU 2-4'x2' CONCRETE PRECAST BARRELS

PARTIAL GENERAL PLAN (1 OF 3)
 U.S. ROUTE 30 OVER
 DRAINAGE DITCH
 F.A.P. ROUTE 353 SEC. (12&13)WRS-4
 WILL COUNTY
 STATION 579+38.78
 STRUCTURE NO. 099-C028



Note:
 1. For Section A-A, see Sheet 2.

INFRASTRUCTURE ENGINEERING | INCORPORATED
 33 West Monroe | Suite 1540 | Chicago, IL 60603
 P 312.425.9560 | F 312.425.9564 | www.infrastructure-eng.com

P:\P\2311505\Drawings\Final\Drawings\Sheets\Culvert\579-sh-01.dgn
 2:00:00 PM
 7/26/2010