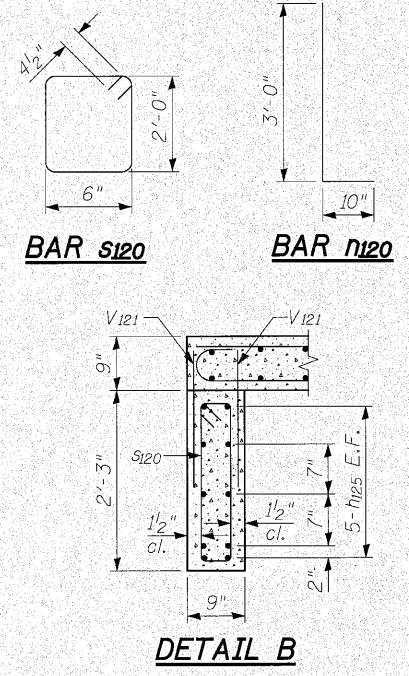
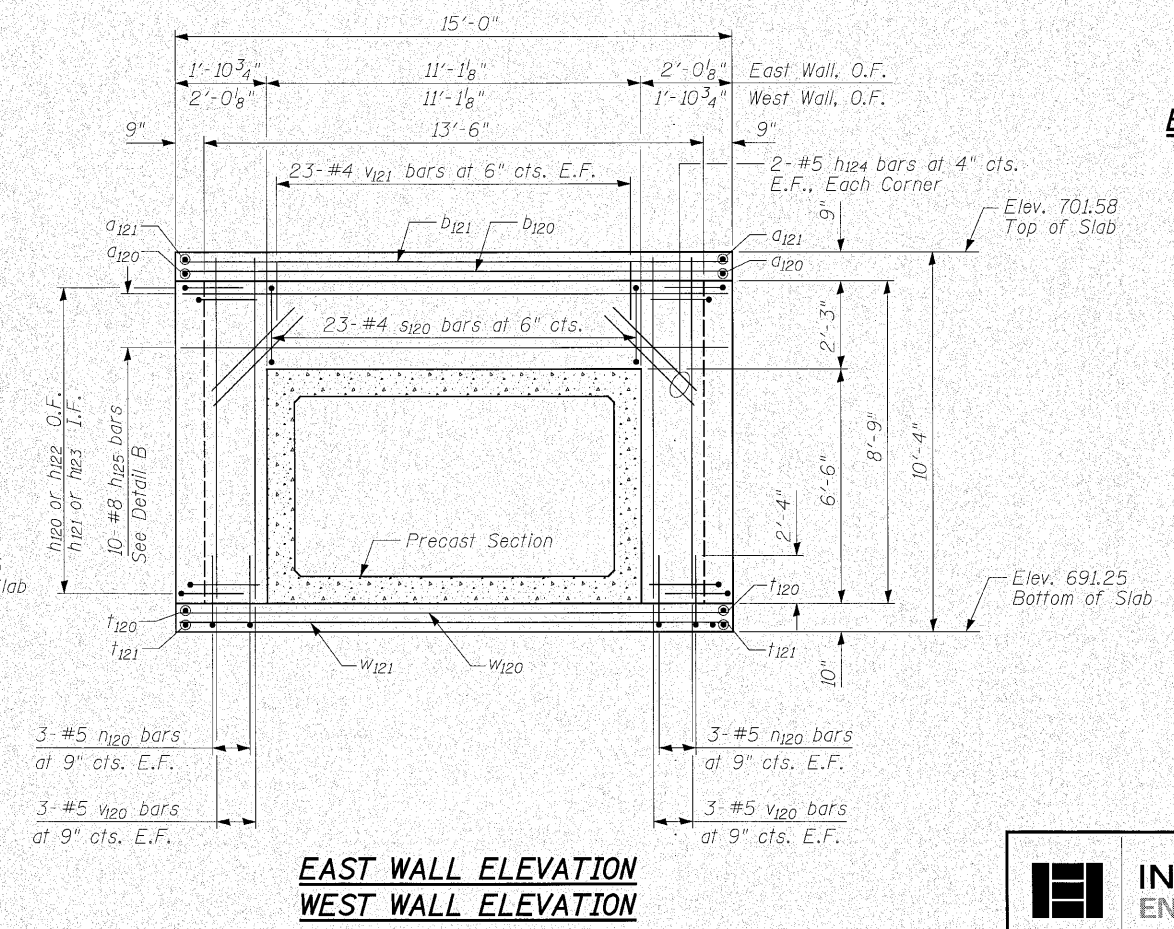
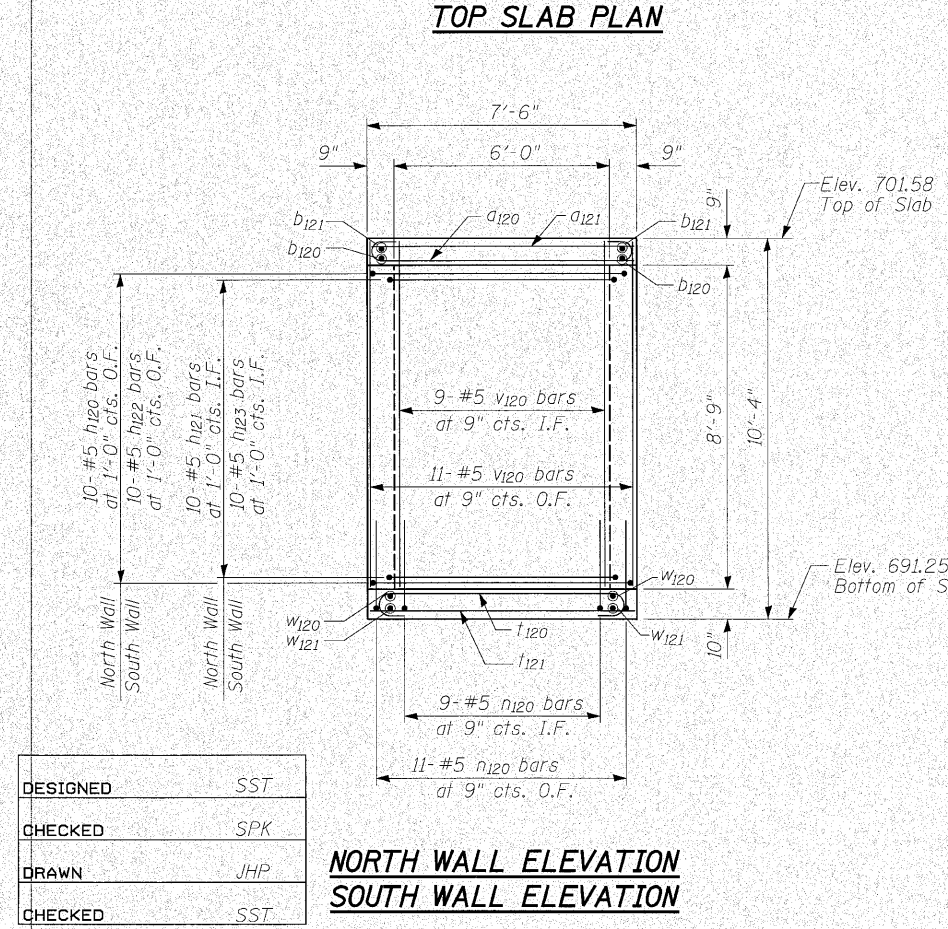


**BILL OF MATERIAL**

Bar	No.	Size	Length	Shape
a120	28	#6	8'-6"	U
a121	10	#5	7'-2"	—
a122	4	#6	6'-1"	U
a123	1	#5	5'-5"	—
a124	2	#6	6'-10"	—
b120	8	#6	14'-8"	—
b121	6	#4	14'-8"	—
b122	3	#6	12'-11"	—
b123	2	#4	12'-11"	—
h120	10	#5	10'-6"	U
h121	10	#5	8'-8"	U
h122	10	#5	10'-4"	U
h123	10	#5	9'-6"	U
h124	16	#5	2'-0"	—
h125	20	#8	14'-8"	—
i120	64	#5	3'-10"	L
s120	46	#4	5'-9"	U
t120	31	#6	8'-6"	U
t121	11	#5	7'-2"	—
v120	64	#5	9'-3"	—
v121	92	#4	1'-9"	—
w120	16	#6	14'-8"	—
w121	9	#5	14'-8"	—
Concrete Structures			Cu. Yd.	15.0
Reinforcement Bars			Pound	4,150



Note:  
Quantity of Concrete Structures and Reinforcement Bars is shown for information only.

**JUNCTION CHAMBER NO. 5**  
U.S. ROUTE 30 AND HILLSIDE ROAD OVER  
TRIBUTARY TO HICKORY CREEK  
F.A.P. ROUTE 353 SEC. (12&13)WRS-4  
WILL COUNTY  
STATION 520+20.00  
STRUCTURE NO. 099-C027

**INFRASTRUCTURE ENGINEERING** INCORPORATED  
33 West Monroe | Suite 1540 | Chicago, IL 60603  
P 312.425.9560 | F 312.425.9564 | www.infrastructure-eng.com

P:\P\_03\15205\Drawings\Final Design\520+20.00\Drawings\Sheets\culv520-shd06.dwg 3:57:31 PM 6/9/2010