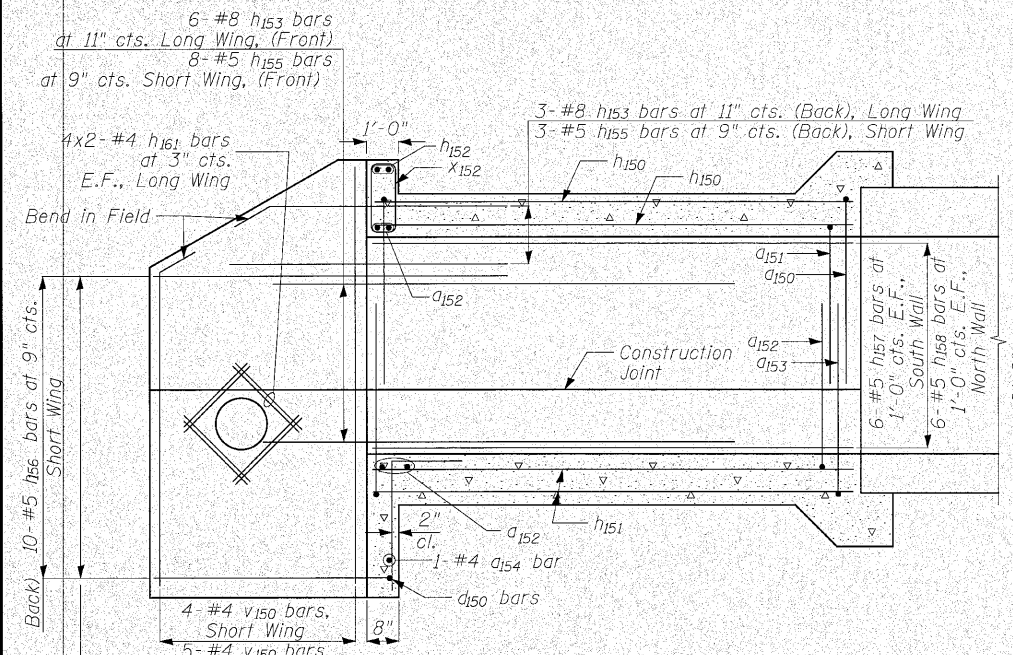


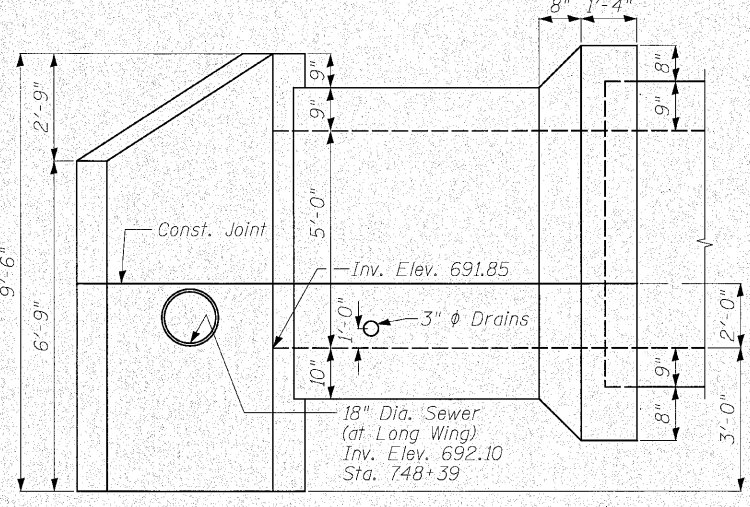
STATE OF ILLINOIS
DEPARTMENT OF TRANSPORTATION

ROUTE NO.	SECTION	COUNTY	TOTAL SHEETS	SHEET NO.	SHEET NO.
353	(12&13)WRS-4	Will	608	466	13 SHEETS
FED. ROAD DIST. NO. 7		ILLINOIS		FED. AID PROJECT-	

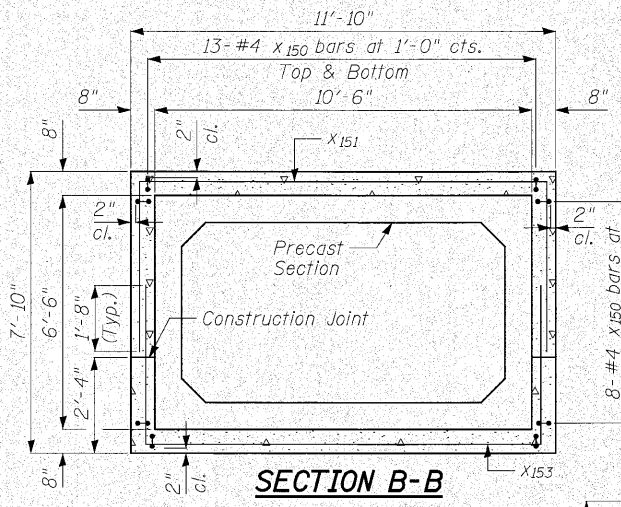
Contract No. 62478



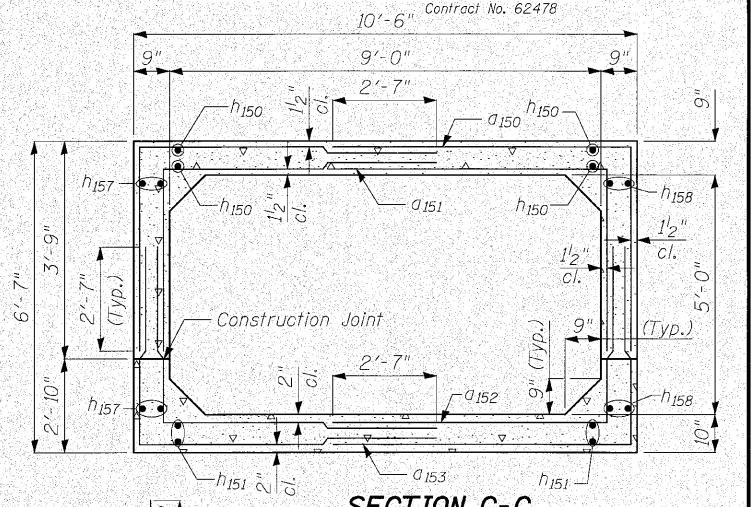
LONG. SECTION
Showing Reinforcement



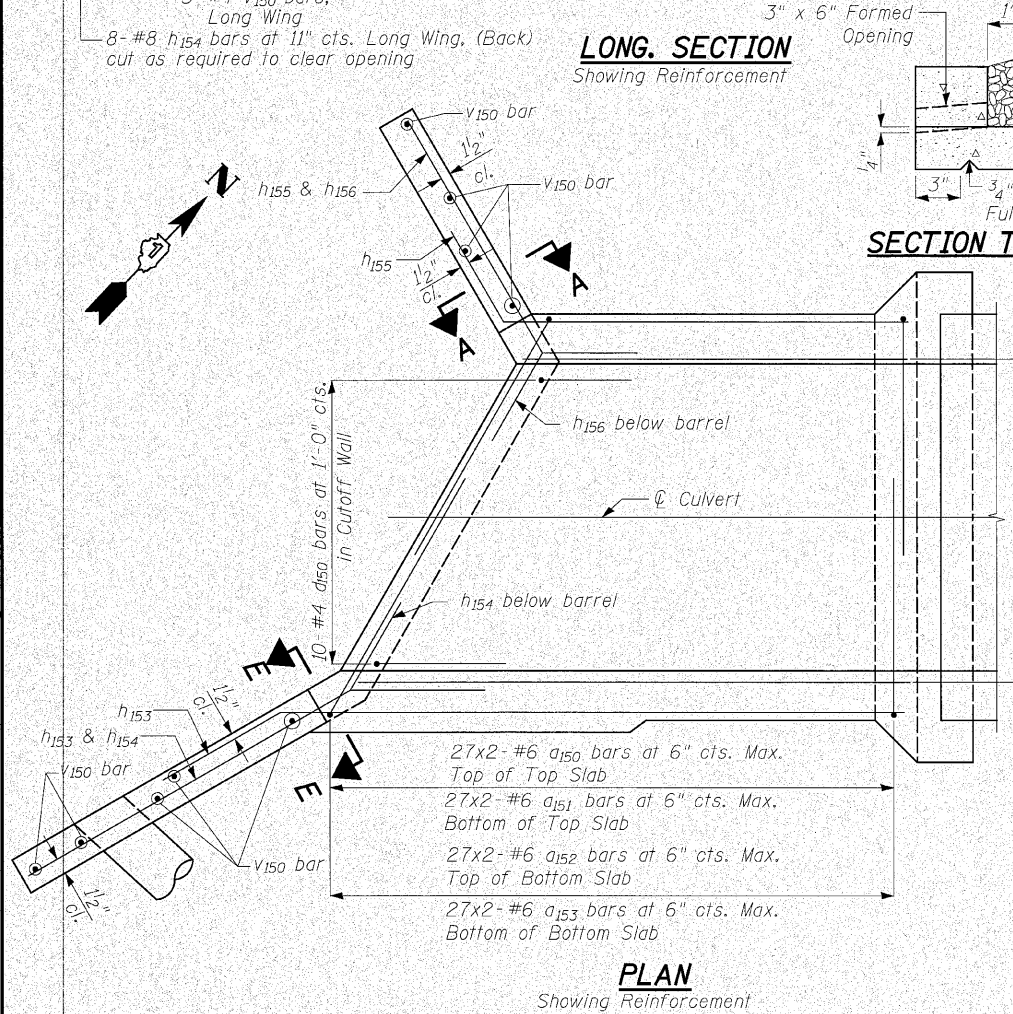
ELEVATION
Showing Dimensions



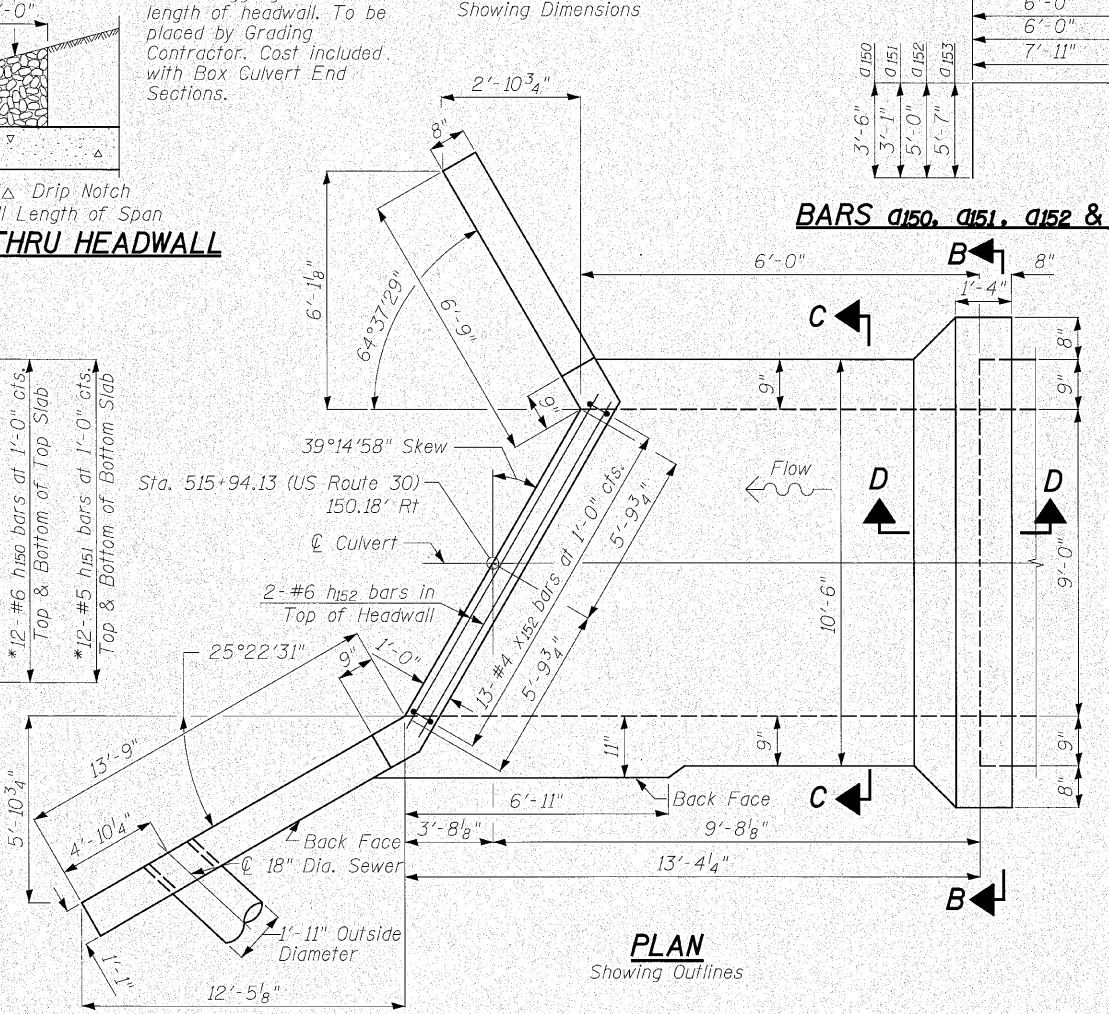
SECTION B-B



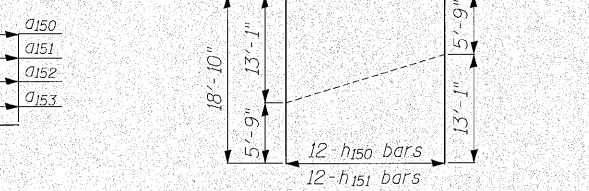
SECTION C-C



PLAN
Showing Reinforcement



SECTION THRU HEADWALL

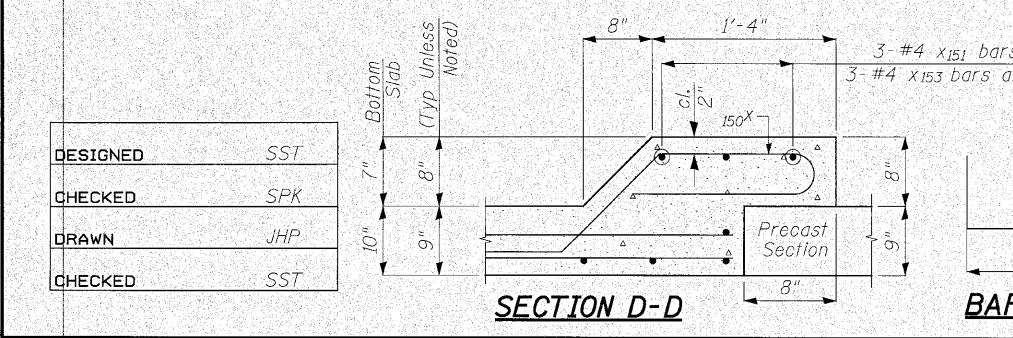


***FIELD CUTTING DIAGRAM**

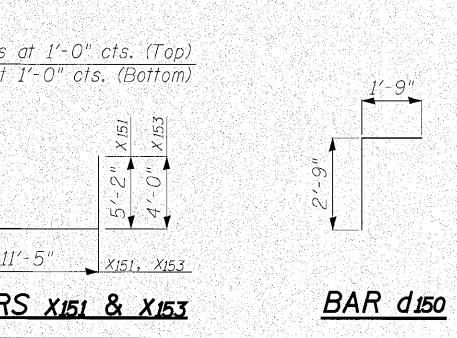
BILL OF MATERIAL

Bar	No.	Size	Length	Shape
a150	54	#6	11'-5"	┌
a151	54	#6	9'-1"	┌
a152	54	#6	11'-0"	┌
a153	54	#6	13'-6"	┌
a154	1	#4	12'-0"	┌
a150	10	#4	4'-6"	┌
h150	12	#6	18'-10"	▬
h151	12	#5	18'-10"	▬
h152	2	#6	12'-0"	▬
h153	9	#8	8'-0"	┘
h154	8	#8	18'-4"	┘
h155	11	#5	8'-0"	┘
h156	10	#5	9'-8"	┘
h157	12	#5	13'-1"	┘
h158	12	#5	5'-9"	┘
h161	16	#4	5'-6"	┘
v150	9	#4	9'-2"	┌
x150	42	#4	5'-8"	┘
x151	3	#4	21'-9"	┌
x152	13	#4	4'-9"	┘
x153	3	#4	19'-5"	┌
Concrete Structures			Cu. Yd.	17.9
Reinforcement Bars			Pound	5,710

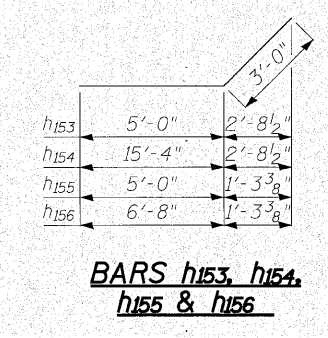
Notes:
Quantity of Concrete Structures and Reinforcement Bars is shown for information only.
Bars indicated thus 27x2-#6 etc. indicates 27 lines of bars with 2 lengths per line.



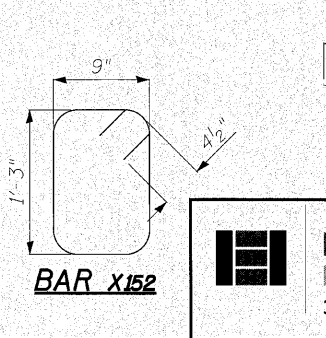
SECTION D-D



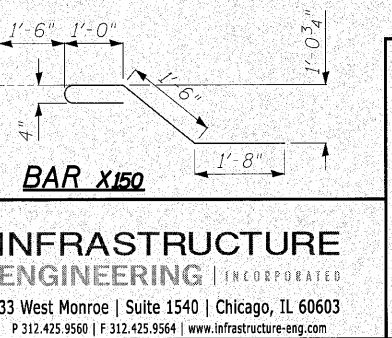
BARS X151 & X153



BAR d150



BARS h153, h154, h155 & h156



BAR X152

INFRASTRUCTURE ENGINEERING INCORPORATED
33 West Monroe | Suite 1540 | Chicago, IL 60603
P 312.425.9560 | F 312.425.9564 | www.infrastructure-eng.com

END SECTION B
U.S. ROUTE 30 & HILLSIDE ROAD OVER
TRIBUTARY TO HICKORY CREEK
F.A.P. ROUTE 353 SEC. (12&13)WRS-4
WILL COUNTY
STATION 520+20.00
STRUCTURE NO. 099-C027

P:\P-03\15205-Drawings\Final Design\520+20.00\Drawings\Sheets\culv520-sh04E3B.dgn 3:56:13 PM 6/9/2010