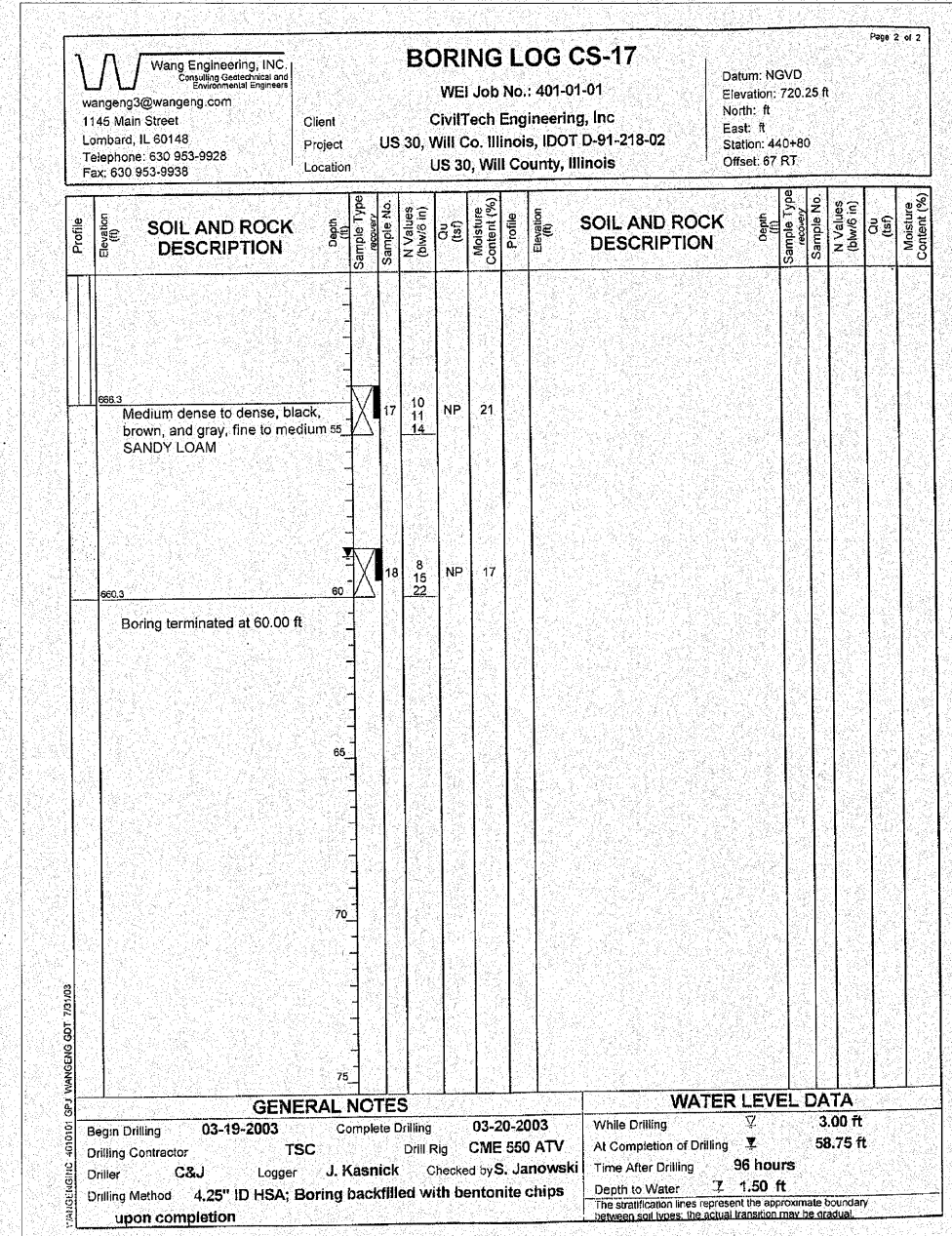
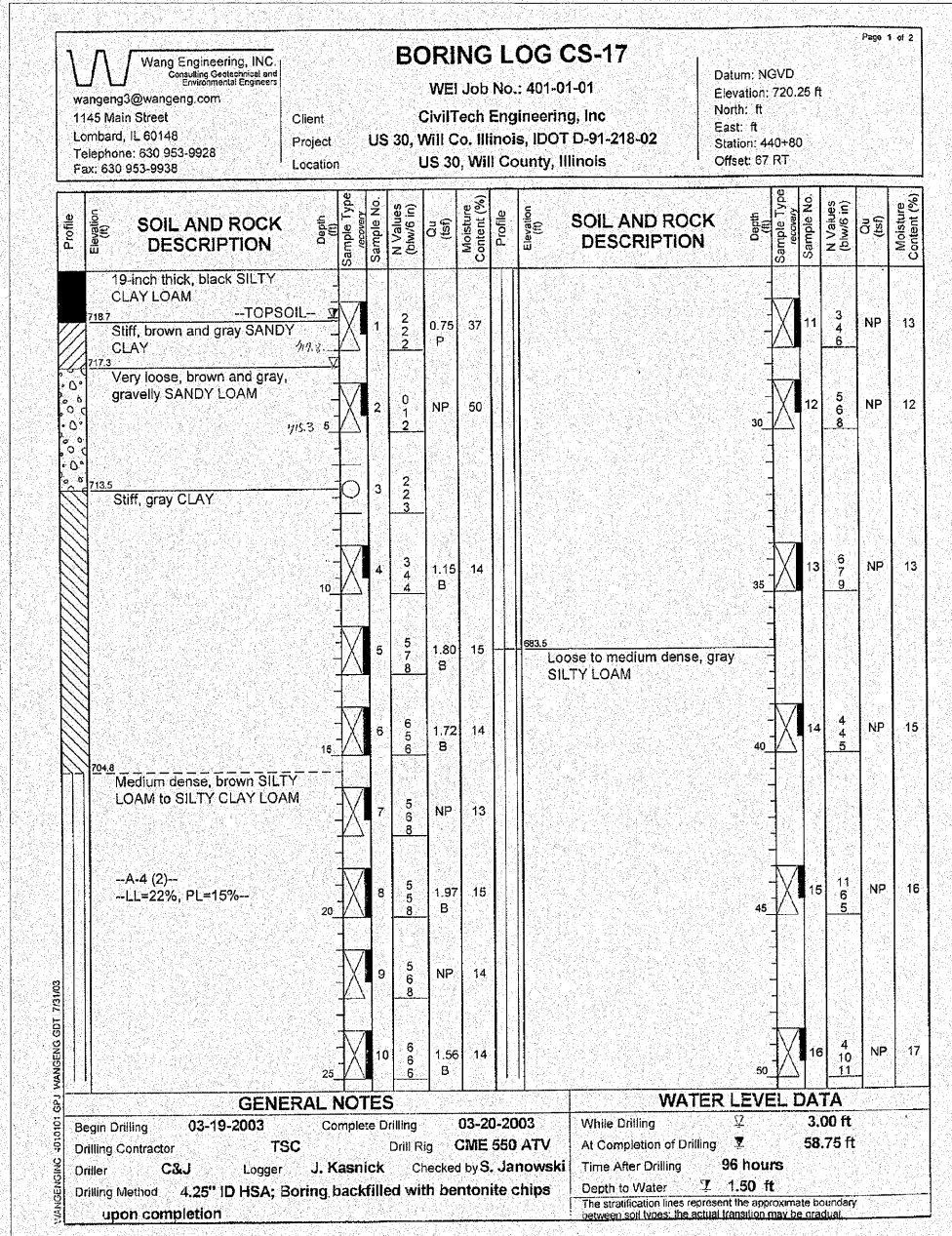


STATE OF ILLINOIS
DEPARTMENT OF TRANSPORTATION



DESIGNED	
CHECKED	
DRAWN	ASJ
CHECKED	SPK

INFRASTRUCTURE ENGINEERING | INCORPORATED
33 West Monroe | Suite 1540 | Chicago, IL 60603
P 312.425.9560 | F 312.425.9564 | www.infrastructure-eng.com

SOIL BORING LOG CS-17
U.S. ROUTE 30 OVER
HICKORY CREEK TRIBUTARY 1
F.A.P. ROUTE 353 SEC. (12&13)WRS-4
WILL COUNTY
STATION 441+23.00
STRUCTURE NO. 099-4626

P:\P-03\1505\Drawings\Final Design\41+23\00\Drawings\Sheets\441-sh-23SB.dgn 2:06:05 PM 5/9/2010