

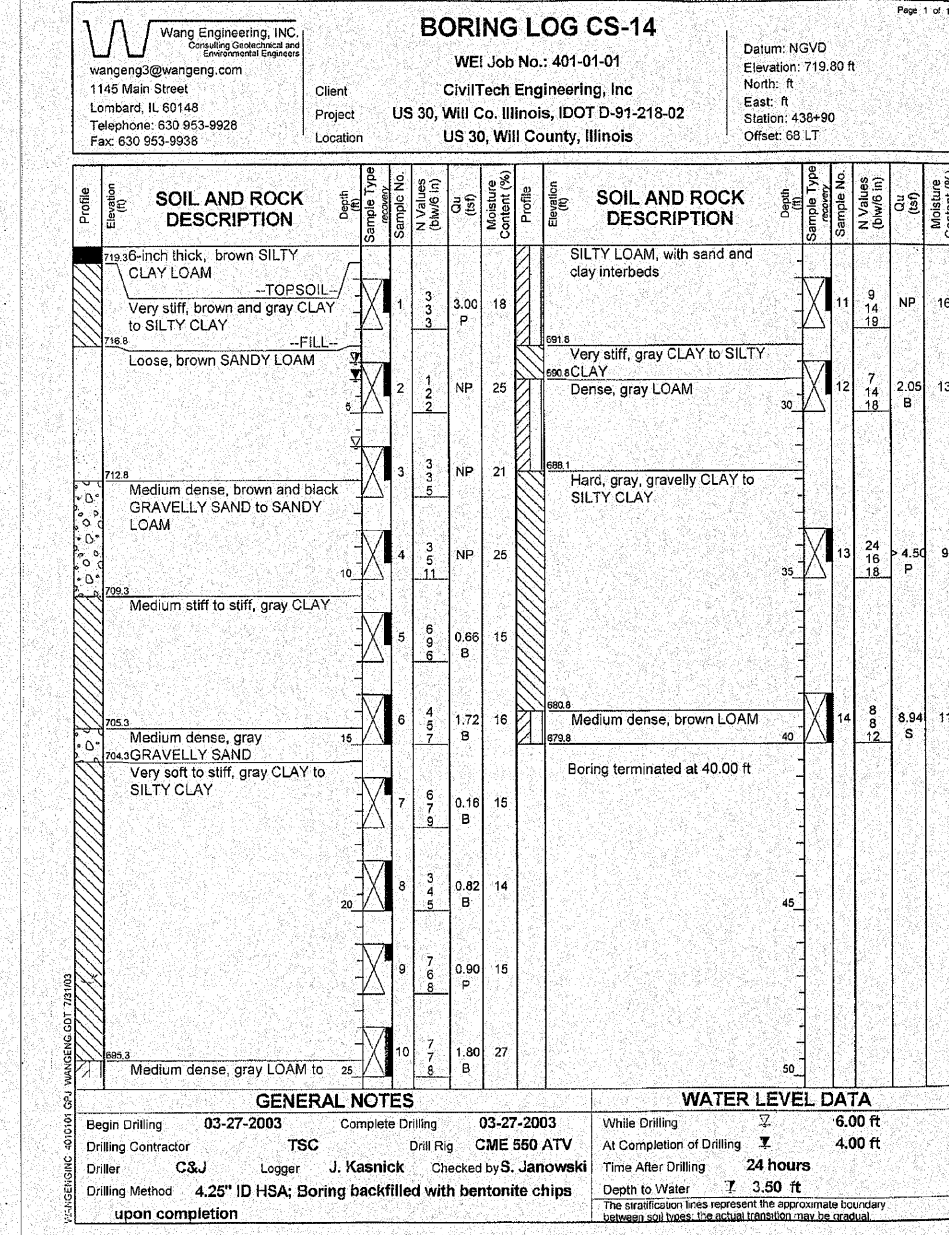
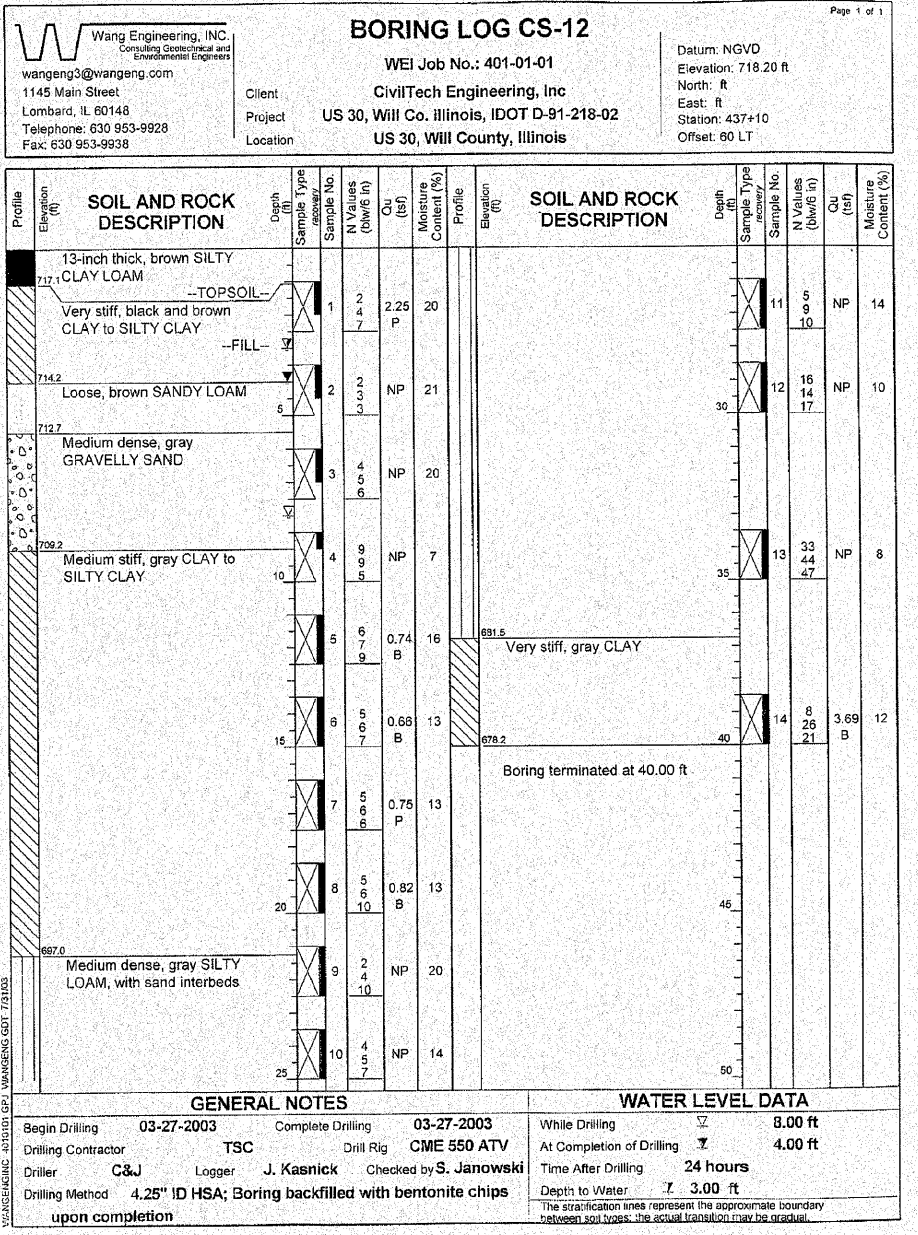
STATE OF ILLINOIS  
DEPARTMENT OF TRANSPORTATION

ROUTE NO.	SECTION	COUNTY	STATIONING	SHEET NO.
353	(12&13)WRS-4	Will	608	460
FED. ROAD DIST. NO. 7	ILLINOIS	FED. AID PROJECT		

SHEET NO. 21

23 SHEETS

Contract No. 62478



DESIGNED	
CHECKED	
DRAWN	ASJ
CHECKED	SPK

**INFRASTRUCTURE ENGINEERING** | INCORPORATED  
33 West Monroe | Suite 1540 | Chicago, IL 60603  
P 312.425.9560 | F 312.425.9564 | www.infrastructure-eng.com

SOIL BORING LOGS CS-12 & CS-14  
U.S. ROUTE 30 OVER  
HICKORY CREEK TRIBUTARY 1  
F.A.P. ROUTE 353 SEC. (12&13)WRS-4  
WILL COUNTY  
STATION 441+23.00  
STRUCTURE NO. 099-4626

P:\P-03\1505\Drawings\Final Design\441+23.00\Drawings\Sheets\441-sh2\15B.dgn 2:01:21 PM 6/9/2010