

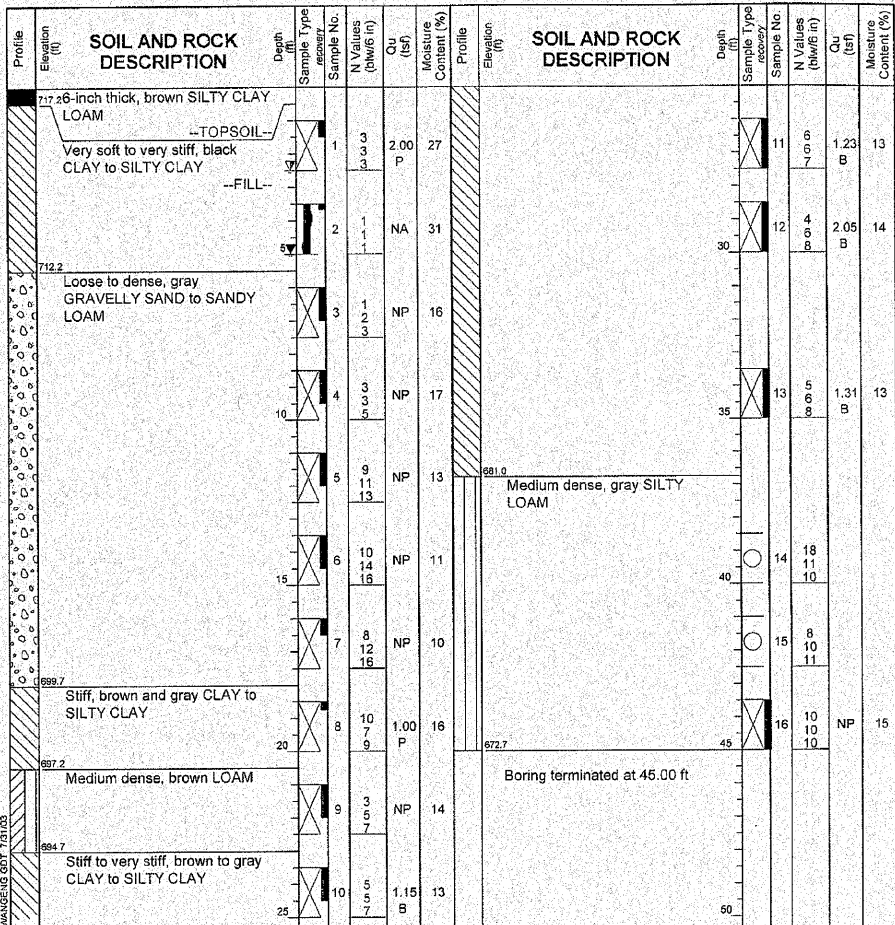
STATE OF ILLINOIS
DEPARTMENT OF TRANSPORTATION

W Wang Engineering, INC.
Consulting Geotechnical and Environmental Engineers
wangeng3@wangeng.com
1145 Main Street
Lombard, IL 60148
Telephone: 630 953-9928
Fax: 630 953-9938

BORING LOG CS-09 Page 1 of 1

WEI Job No.: 401-01-01
CivilTech Engineering, Inc
US 30, Will Co. Illinois, IDOT D-91-218-02
US 30, Will County, Illinois

Datum: NGVD
Elevation: 717.70 ft
North: ft
East: ft
Station: 434+60
Offset: 50 LT



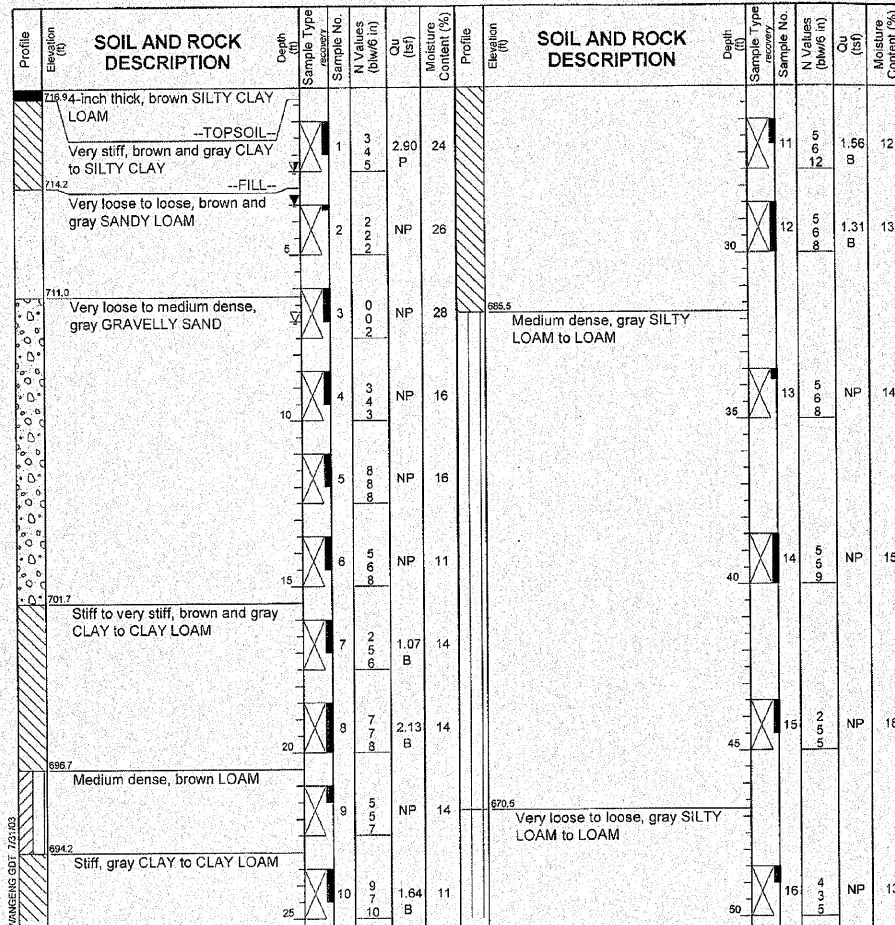
GENERAL NOTES		WATER LEVEL DATA	
Begin Drilling	03-26-2003	Complete Drilling	03-26-2003
Drilling Contractor	TSC	Drill Rig	CME 550 ATV
Driller	C&J	Logger	J. Kasnick
Checked by	S. Janowski	Time After Drilling	24 hours
Drilling Method	4.25" ID HSA; Boring backfilled with bentonite chips upon completion	Depth to Water	5.00 ft
		At Completion of Drilling	5.00 ft
		Time After Drilling	24 hours
		Depth to Water	2.50 ft

W Wang Engineering, INC.
Consulting Geotechnical and Environmental Engineers
wangeng3@wangeng.com
1145 Main Street
Lombard, IL 60148
Telephone: 630 953-9928
Fax: 630 953-9938

BORING LOG CS-10 Page 1 of 2

WEI Job No.: 401-01-01
CivilTech Engineering, Inc
US 30, Will Co. Illinois, IDOT D-91-218-02
US 30, Will County, Illinois

Datum: NGVD
Elevation: 717.20 ft
North: ft
East: ft
Station: 435+35
Offset: 52 LT



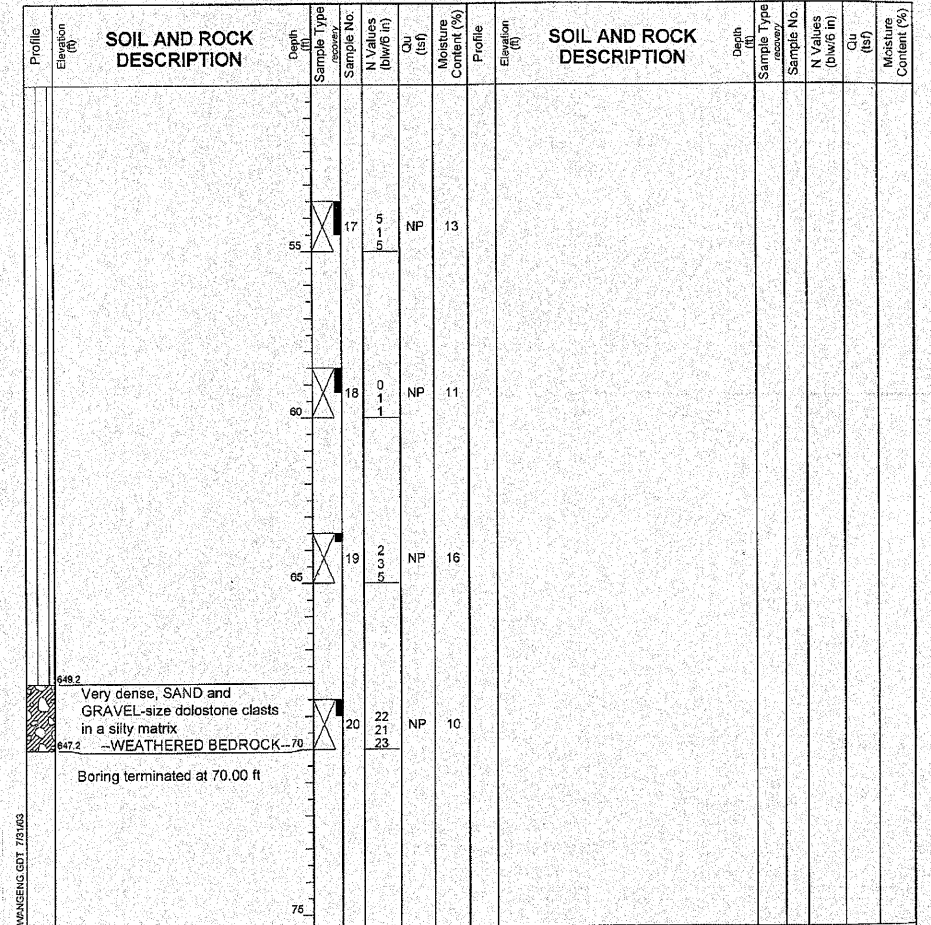
GENERAL NOTES		WATER LEVEL DATA	
Begin Drilling	03-26-2003	Complete Drilling	03-27-2003
Drilling Contractor	TSC	Drill Rig	CME 550 ATV
Driller	C&J	Logger	J. Kasnick
Checked by	S. Janowski	Time After Drilling	24 hours
Drilling Method	4.25" ID HSA; Boring backfilled with bentonite chips upon completion	Depth to Water	7.00 ft
		At Completion of Drilling	3.50 ft
		Time After Drilling	24 hours
		Depth to Water	2.50 ft

W Wang Engineering, INC.
Consulting Geotechnical and Environmental Engineers
wangeng3@wangeng.com
1145 Main Street
Lombard, IL 60148
Telephone: 630 953-9928
Fax: 630 953-9938

BORING LOG CS-10 Page 2 of 2

WEI Job No.: 401-01-01
CivilTech Engineering, Inc
US 30, Will Co. Illinois, IDOT D-91-218-02
US 30, Will County, Illinois

Datum: NGVD
Elevation: 717.20 ft
North: ft
East: ft
Station: 435+35
Offset: 52 LT



GENERAL NOTES		WATER LEVEL DATA	
Begin Drilling	03-26-2003	Complete Drilling	03-27-2003
Drilling Contractor	TSC	Drill Rig	CME 550 ATV
Driller	C&J	Logger	J. Kasnick
Checked by	S. Janowski	Time After Drilling	24 hours
Drilling Method	4.25" ID HSA; Boring backfilled with bentonite chips upon completion	Depth to Water	7.00 ft
		At Completion of Drilling	3.50 ft
		Time After Drilling	24 hours
		Depth to Water	2.50 ft

DESIGNED	
CHECKED	
DRAWN	ASJ
CHECKED	SPK

INFRASTRUCTURE ENGINEERING | INCORPORATED
33 West Monroe | Suite 1540 | Chicago, IL 60603
P 312.425.9560 | F 312.425.9584 | www.infrastructure-eng.com

SOIL BORING LOGS CS-09 & CS-10
U.S. ROUTE 30 OVER
HICKORY CREEK TRIBUTARY 1
F.A.P. ROUTE 353 SEC. (12&13)WRS-4
WILL COUNTY
STATION 441+23.00
STRUCTURE NO. 099-4626