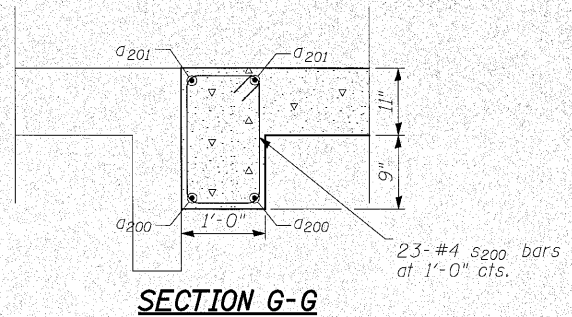
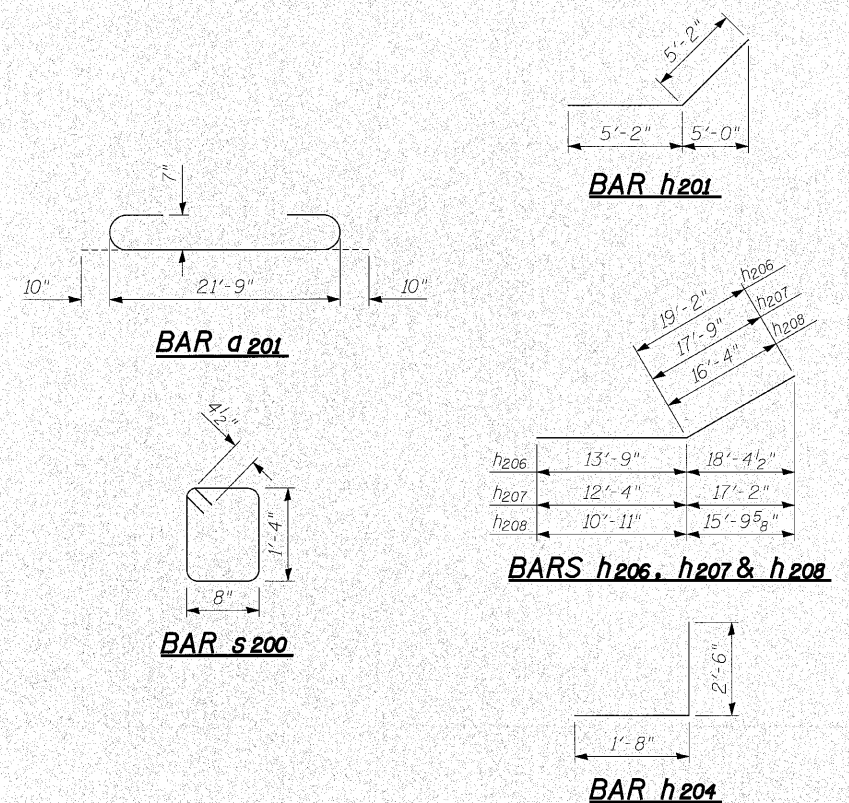
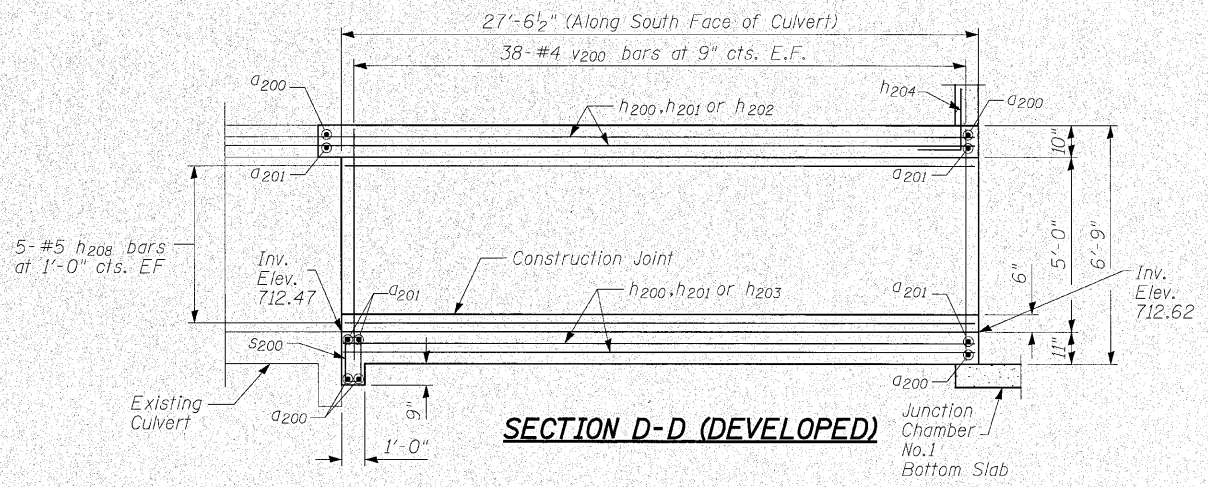
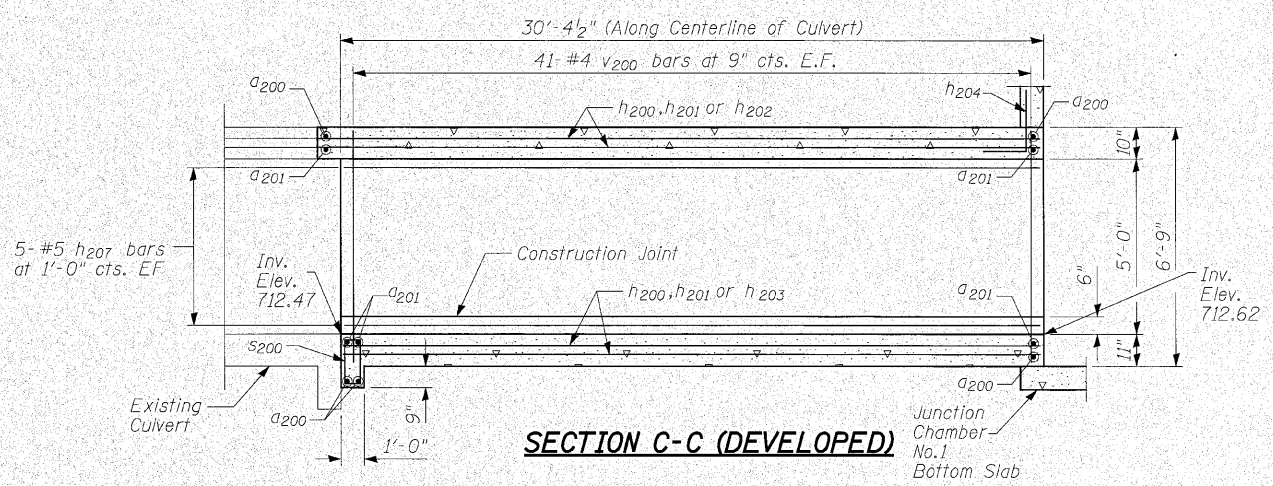
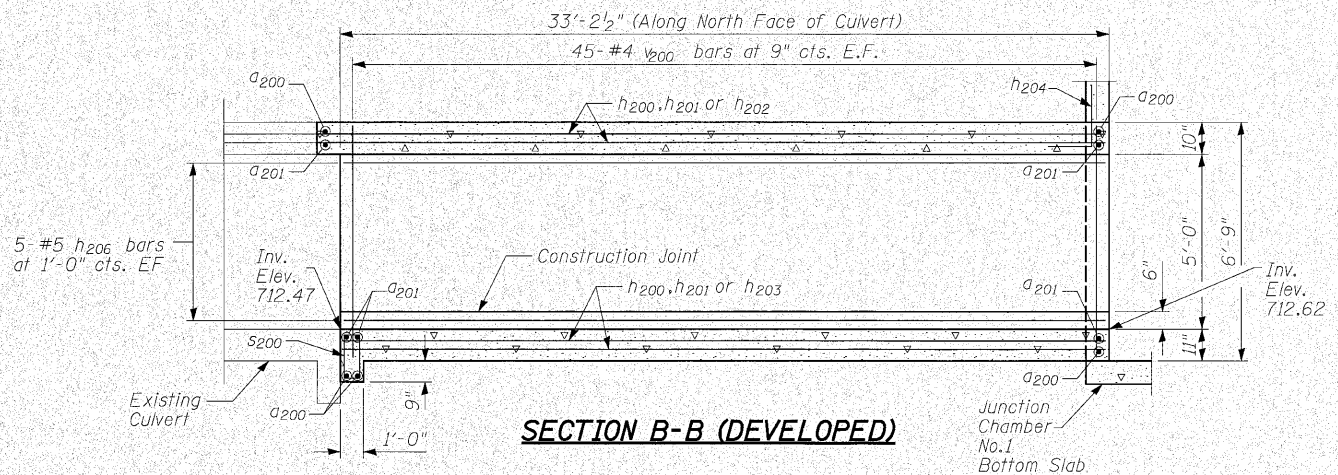


STATE OF ILLINOIS
DEPARTMENT OF TRANSPORTATION

ROUTE NO.	SECTION	COUNTY	TOTAL SHEETS	SHEET NO.	SHEET NO.
353	(12&13)WRS-4	Will	608	447	23 SHEETS
FED. ROAD DIST. NO. 7		ILLINOIS	FED. AID PROJECT-		
Contract No. 62478					



BILL OF MATERIAL

Bar	No.	Size	Length	Shape
a200	106	#7	21'-9"	—
a201	91	#7	23'-5"	()
h200	124	#5	16'-2"	—
h201	124	#5	10'-4"	—
h202	78	#5	12'-0"	—
h203	46	#5	10'-9"	—
h204	27	#4	4'-2"	—
h206	10	#5	32'-11"	—
h207	10	#5	30'-1"	—
h208	10	#5	27'-3"	—
s200	23	#4	4'-9"	□
v200	248	#4	6'-5"	—
Concrete Box Culverts		Cu. Yd.	55.4	
Reinforcement Bars		Pound	16,140	
Expansion Bolt 3/4 inch		Each	33	

DESIGNED	JAC
CHECKED	SPK
DRAWN	JAC
CHECKED	SPK

INFRASTRUCTURE ENGINEERING INCORPORATED
33 West Monroe | Suite 1540 | Chicago, IL 60603
P 312.425.9560 | F 312.425.9564 | www.infrastructure-eng.com

10'X5' DOUBLE BOX CULVERT EXTENSION (2 OF 2)
U.S. ROUTE 30 OVER
HICKORY CREEK TRIBUTARY 1
F.A.P. ROUTE 353 SEC. (12&13)WRS-4
WILL COUNTY
STATION 441+23.00
STRUCTURE NO. 099-4626

P:\P_03\1506\Drawings\Final_Design\441+23.00\Drawings\Sheets\Culv441-sh108(E).dgn 1:39:03 PM 6/9/2010