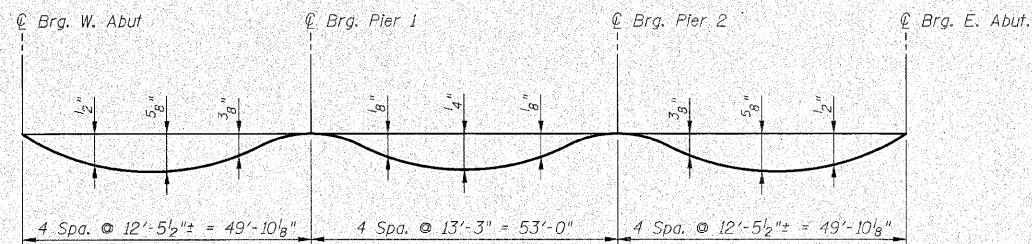


ROUTE NO.	SECTION	COUNTY	SHEET NO.	SHEET
353	(12&13) WRS-4	WILL	608	417
FED. ROAD DIST. NO. 1	ILLINOIS	FED. AID PROJECT-		

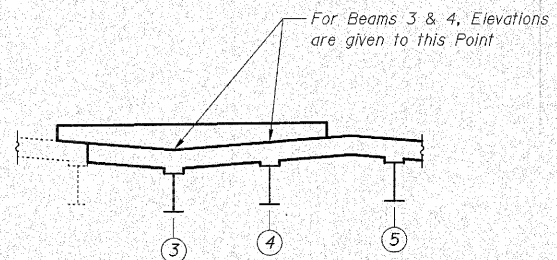
Contract No. 62478



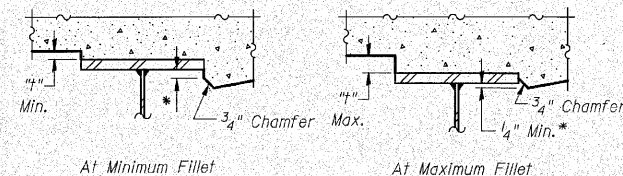
**DEAD LOAD DEFLECTION DIAGRAM**

(Includes weight of cast-in-place concrete only)

Note: The above deflections are not to be used in the field if the engineer is working from the grade elevations adjusted for dead load deflections as shown.

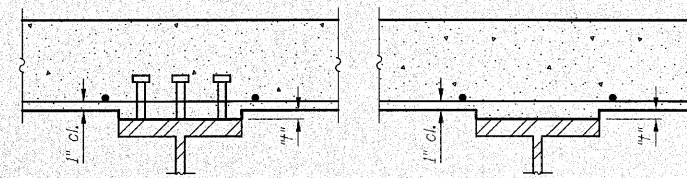


**DETAIL**



\* Variable (Not less than 1/4")

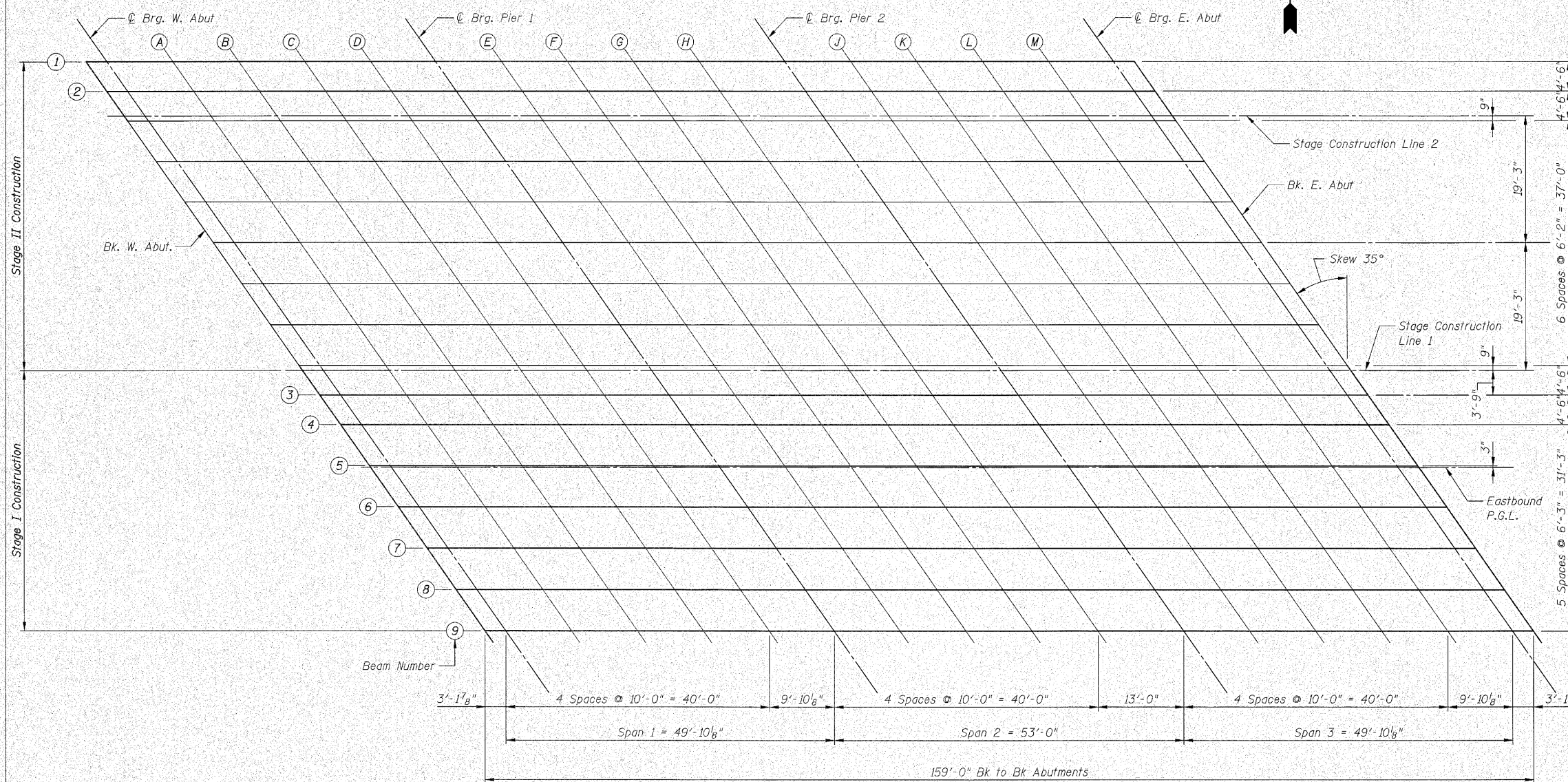
**Exterior Beams**



**Interior Beams**

To determine "a": After all structural steel has been erected, elevations of the top flanges of the beams shall be taken at intervals shown below. These elevations subtracted from the "Theoretical Grade Elevations Adjusted for Dead Load Deflection" shown on the plans, minus slab thickness, equals the fillet heights "a" above top flange of beams.

**FILLET HEIGHTS**



**PLAN**

S4 OF S26

STATE OF ILLINOIS  
DEPARTMENT OF TRANSPORTATION  
DECK ELEVATION LOCATIONS

U.S. RTE. 30 OVER HICKORY CREEK  
STATION 493+89.73  
STRUCTURE NUMBER 099-0311

SCALE: None  
DATE: June 11, 2010

DRAWN BY: C. Cooney  
CHECKED BY: G. Hallstad