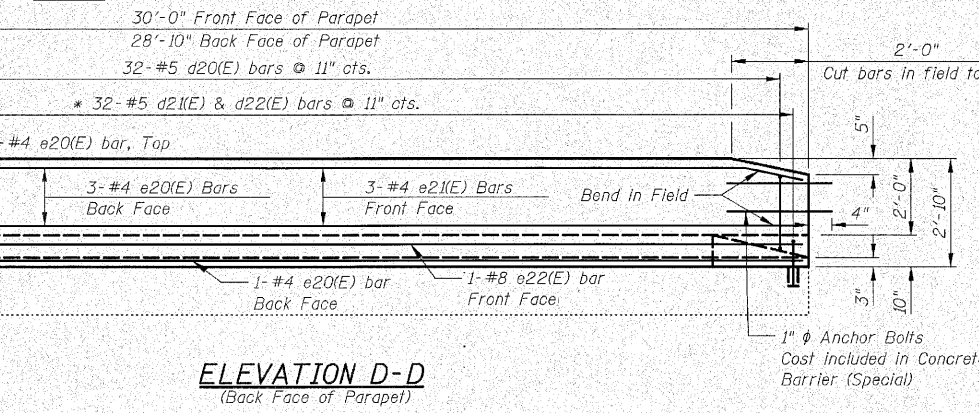


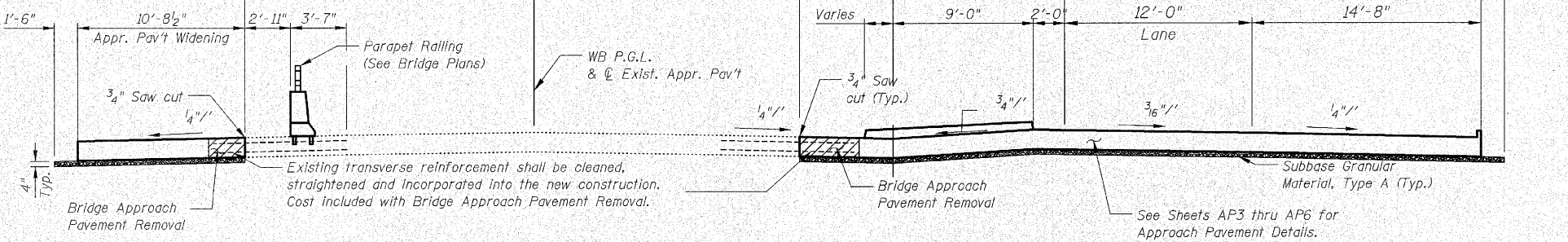
**PLAN**

Notes:  
 \* Core and set #5 c13(E), #5 d21(E) & #5 d22(E) bars accordingly to Article 509.06 of the Standard Specifications. Cored holes shall be roughened or scored per manufacturer's recommendations. Maximum depth of hole shall not exceed 6".  
 For additional approach pavement details, see Sheets AP3 thru AP6.  
 Reinforcement Bars designated (E) shall be epoxy coated.

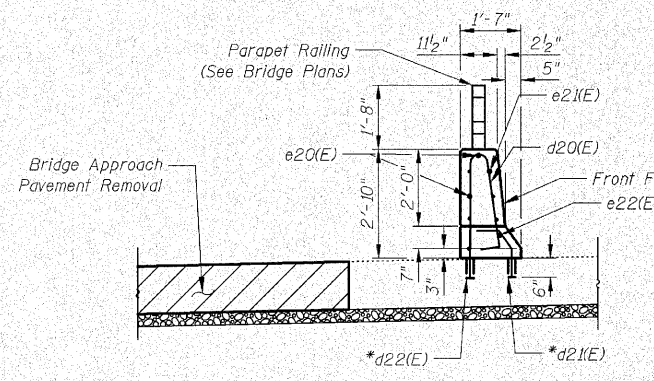
**LEGEND**  
 Bridge Approach Pavement Removal



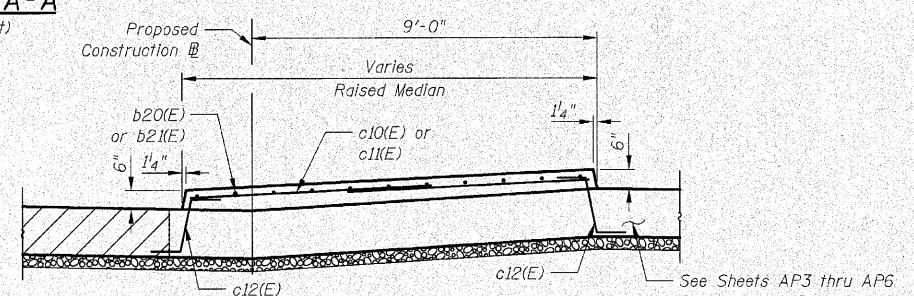
**ELEVATION D-D**  
(Back Face of Parapet)



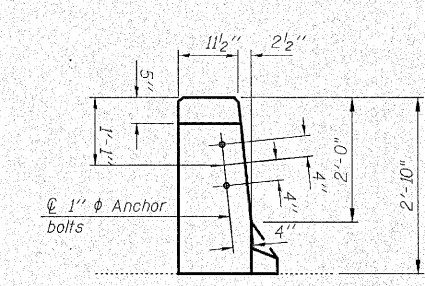
**SECTION A-A**  
(Looking East)



**SECTION C-C**  
(Looking East)

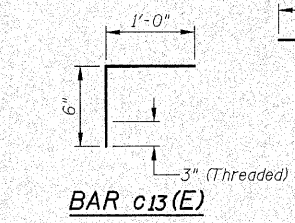


**SECTION B-B**  
(Looking East)

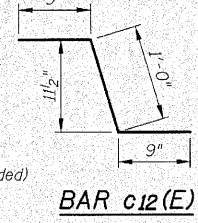


**VIEW E-E**

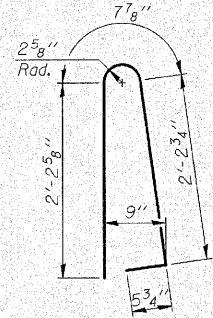
**1" φ ANCHOR BOLT**



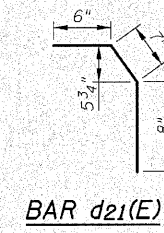
**BAR c13(E)**



**BAR c12(E)**



**BAR d20(E)**



**BAR d21(E)**

**REINFORCEMENT BAR SCHEDULE**  
(for the Raised Median and Concrete Barrier (Special) only - 2 Approaches)

Bar	No.	Size	Length	Shape
b20(E)	27	#5	29'-8"	
b21(E)	1	#5	11'-2"	
c10(E)	30	#5	7'-7"	
c11(E)	30	#5	6'-11"	
c12(E)	90	#5	2'-6"	
c13(E)	30	#5	1'-6"	
c14(E)	30	#5	17'-5"	
d20(E)	64	#5	5'-7"	
d21(E)	64	#5	1'-9"	
d22(E)	64	#5	1'-2"	
e20(E)	8	#4	28'-6"	
e21(E)	8	#4	29'-8"	
e22(E)	1	#8	29'-8"	
e23(E)	1	#8	28'-6"	

**BILL OF MATERIAL**  
(for 2 Approaches)

Item	Unit	Quantity
* Approach Slab Removal	Sq. Yd.	39
* Bridge Approach Pavement (Special)	Sq. Yd.	363
* Concrete Barrier, (Special)	Foot	60

AP2 OF AP6

STATE OF ILLINOIS  
 DEPARTMENT OF TRANSPORTATION  
 WEST BRIDGE APPROACH PAVEMENT  
 U.S. RTE. 30 OVER HICKORY CREEK  
 STRUCTURE NUMBER 099-0311

SCALE: DATE: June 11, 2010  
 DRAWN BY: C. Cooney  
 CHECKED BY: G. Hatlestad