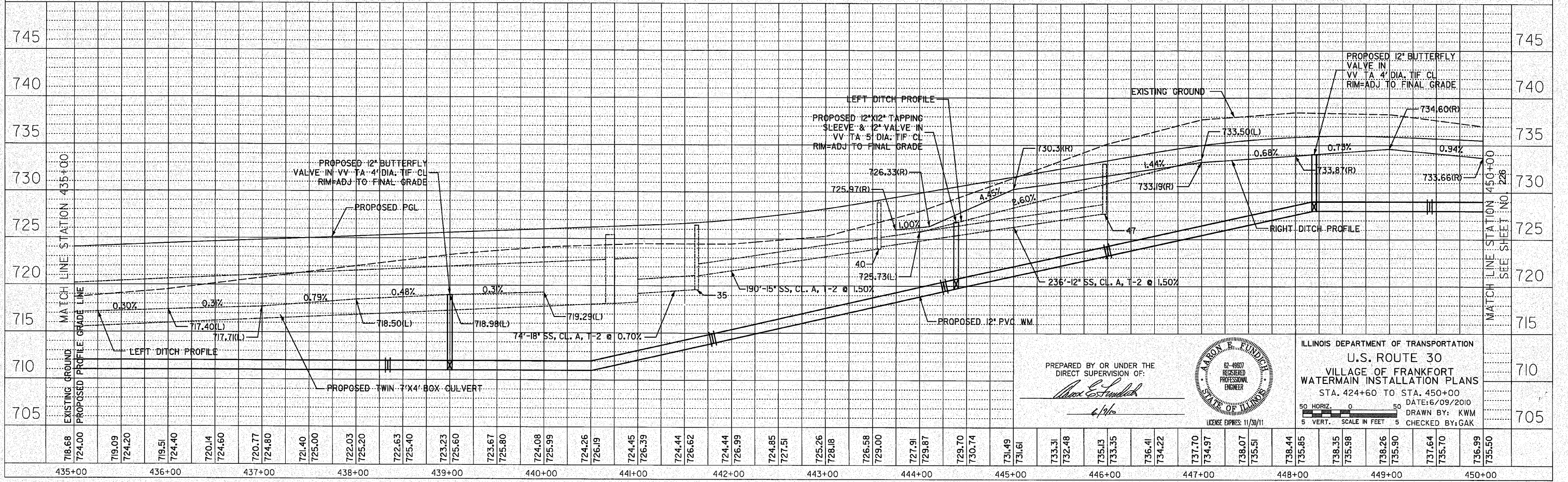
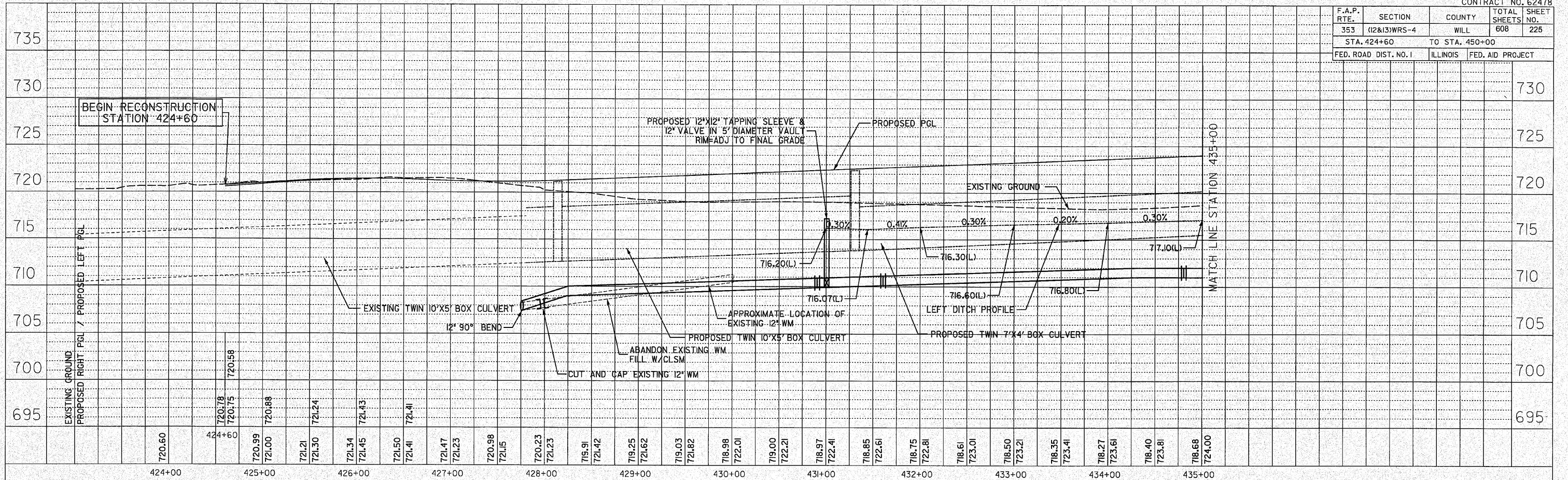
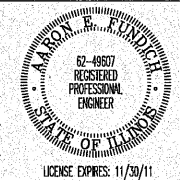


F.A.P. RTE.	SECTION	COUNTY	TOTAL SHEETS	SHEET NO.
353	(I2&I3)WRS-4	WILL	608	225
STA. 424+60 TO STA. 450+00				
FED. ROAD DIST. NO. 1	ILLINOIS	FED. AID PROJECT		



PREPARED BY OR UNDER THE DIRECT SUPERVISION OF:
Robert E. Smith
 6/9/16



ILLINOIS DEPARTMENT OF TRANSPORTATION
 U.S. ROUTE 30
 VILLAGE OF FRANKFORT
 WATERMAIN INSTALLATION PLANS
 STA. 424+60 TO STA. 450+00
 DATE: 6/09/2010
 DRAWN BY: KWM
 CHECKED BY: GAK

